



LEO WORKWEAR

OUR VISION, YOUR VISIBILITY

VOLUME 10

LEO WORKWEAR

OUR VISION, YOUR VISIBILITY

Leo Workwear are the high visibility clothing specialists.

With 40 years' of experience in the design and manufacture of high-quality workwear, Leo now offer one of the most comprehensive and exciting high visibility clothing ranges available in today's European PPE market.

Our customers sell into many sectors, whether it's rail, highways, construction, festivals/events, utilities or airports, you'll see a Leo garment being worn. This year's catalogue is the by far the biggest, with over 65 new products introduced.

OUR VISION, YOUR VISIBILITY

We are committed to using quality fabrics, reflective tapes and components, to offer garment longevity, comfort and value for money. At Leo, we are always looking at "what's next" in the industry in order to evolve and improve existing stock lines. We do more than just sell clothing, we also work hard to ensure every box has been ticked when it comes to conformance, sustainability and ethical practices; backed by our membership of many important bodies, such as SEDEX, BSIF and REMA.

PUSHING THE BOUNDARIES

We're proud that many of the new garments featured within are some of our most innovative, creative and highest performing. Highlights include the Marisco Jacket and Lundy Overtrouser which sees Leo pushing the boundaries of performance on waterproofness, breathability and design. Whilst the introduction of our Coolmax® Performance T-Shirts offer our highest specification tops to date.

PROTECTION FOR ALL

Recently, we've had a real focus on inclusion; working on some of the largest current infrastructure projects in the UK has revealed to us where people are unable to work due to the limitations of their PPE. To combat this, we introduced the first maternity garments to the market that conform to ISO 20471 and the first high visibility Modesty Tunic, meaning women can now adhere to their religious beliefs without compromising their safety. These garments join our already extensive women's clothing range.

LEO CARES

We are a company that cares about the world we live in and are always looking for ways to reduce the impact we have on the environment. This is backed by the introduction of our EcoViz range of products; these are garments made from recycled polyester which produces half the emissions of standard fabrics, whilst still fully conforming to ISO 20471. Amongst other progressive moves, our garment packaging is now 100% biodegradable.

ANYTHING IS POSSIBLE

We're not limited to selling stock products, you can call upon our expertise to develop your own branded products or bespoke customer requirements; Leo can manage your project from design to delivery. Our friendly and efficient sales and customer service team will be pleased to assist and advise you on your garment requirements.



OEKO-TEX®
INSPIRING CONFIDENCE

SGS

REMA





INTRODUCTION

01

01 WELCOME TO LEO WORKWEAR

04 DESIGNED IN DEVON, DELIVERED ALL OVER THE WORLD

05 WHY LEO?

06 THE LEO DIFFERENCE

07 BESPOKE & SPECIAL PRODUCTION

08 MY LEO

09 GUIDE TO HI-VIS STANDARDS

162-163 SIZE GUIDE

164 A-Z INDEX



WAISTCOATS

10

12-15 STANDARD

16-17 SLEEVED

18-21 SUPERIOR

22-23 SUPERIOR SLEEVED

24-27 SUPERIOR WITH TABLET POCKET

28-31 COOLVIZ

32-35 RAILWAY & ANTI-ENTANGLEMENT

36-39 LIMITED FLAME SPREAD

40-43 LFS ANTI-STATIC

44-47 SINGLE COLOUR REFLECTIVE

48-49 DUAL COLOUR REFLECTIVE



POLO SHIRTS & T-SHIRTS

50

52-57 FABRIC BRAND GUIDE

58-65 POLO SHIRTS

66-69 SLEEVED POLO SHIRTS

70-73 T-SHIRTS

74-75 SLEEVED T-SHIRTS



SWEATSHIRTS & SNOODS

76

78-81 SWEATSHIRTS

82-83 SNOOD SWEATSHIRTS

84-85 SNOODS



JACKETS & ANORAKS

86

88-89 FLEECE JACKET

90-91 SOFTSHELL JACKET

92-93 BODYWARMER

94-97 FABRIC BRAND GUIDE: FOUL WEATHER

98-107 ANORAKS

104-105 INTERACTIVE GARMENTS

108-109 LAYER WITH LEO

110-113 BREATHABLE JACKETS

114-115 BOMBER JACKETS



TROUSERS, COVERALLS & BIB & BRACE

116

118-121 OVERTROUSERS

122-123 COVERALLS

124 BIB & BRACE

125 STRETCH WORK TROUSER

126-127 JOG TROUSER

128-132 CARGO TROUSERS

133 POLY/COTTON COVERALLS

TRAFFIC MANAGEMENT

134

136-137 TRAFFIC MANAGEMENT



WOMENS & MATERNITY

138

140-141 FABRIC BRAND GUIDE

142-143 SUPERIOR WAISTCOATS

144-145 POLO SHIRTS

146 MODESTY TUNIC

147 BODYWARMERS

148-149 SWEATSHIRTS

150-151 SOFTSHELL JACKETS

152-153 BREATHABLE JACKETS

154-157 TROUSERS

158-159 MATERNITY



CHILDRENS WAISTCOATS

160

160-161 NEONSTARS CHILDRENS WAISTCOATS

CONTENTS



EXPERTISE

Nearly 40 years creating quality high visibility workwear.



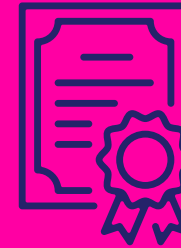
REPUTATION

For quality, for consistency, for reliability, for service.



INNOVATION

The latest fabrics, the latest tape technologies.



CONFORMANCE

Everything is tested, everything is backed by a certificate.



CUSTOMER SUPPORT

Renowned in the industry for excellent customer service.



FLEXIBILITY

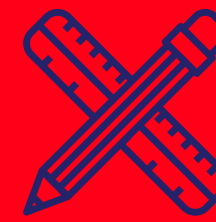
Embellish a garment, rush an order through, we'll always do our best.

DESIGNED IN DEVON, DELIVERED ALL OVER THE WORLD

- Our garments are designed at Leo HQ, in Barnstaple, North Devon.
- They are manufactured by our carefully selected partners in the Far East.
- Finished products are delivered to Leo HQ, quality checked, and stored in our 35,000sqft Warehouse.
- From here we despatch our products and deliver to our re-sellers throughout the UK, Europe, and the World.

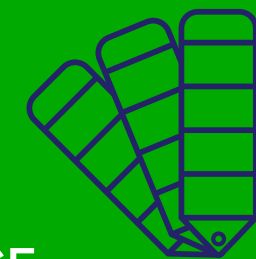
WHY LEO?

We're about more than just selling great garments, here are 12 reasons to work with Leo:



DESIGN

Every feature has a purpose, aimed at wearer satisfaction.



CHOICE

Multiple colour combinations, vast size range available.



SPEED

Stocked products with you next day.



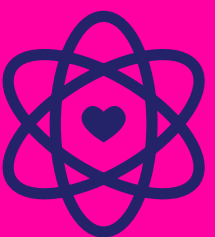
QUALITY CONTROL

Checks at the factories, checks at Leo HQ.



STOCK

A large and balanced stock holding to fulfil orders as quickly as possible.



ETHICAL

Frequent factory audits and visits by Leo, members of SEDEX.

LET LEO TAKE THE STRAIN OF BUYING GARMENTS OFFSHORE

THE LEO DIFFERENCE



Expertise of working with our offshore partners



Vetted and audited factories that give peace of mind that garments are made in factories free of staff exploitation or discrimination



Flexible payment terms; peace of mind when making a big investment



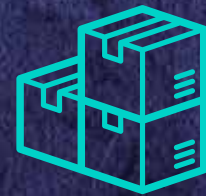
Dedicated **Project Managers** who understand the process from garment conception to delivery



A **Design Team** that balances their garment design flair with their knowledge of conformance to important safety standards



Advice on the best fabrics, components & reflective tapes to fulfil the wearer's needs, within budgetary requirements



Regular updates on delivery dates throughout the project



The option to bring garments in under **Leo Workwear certification**



The option to **sample your garment** prior to order

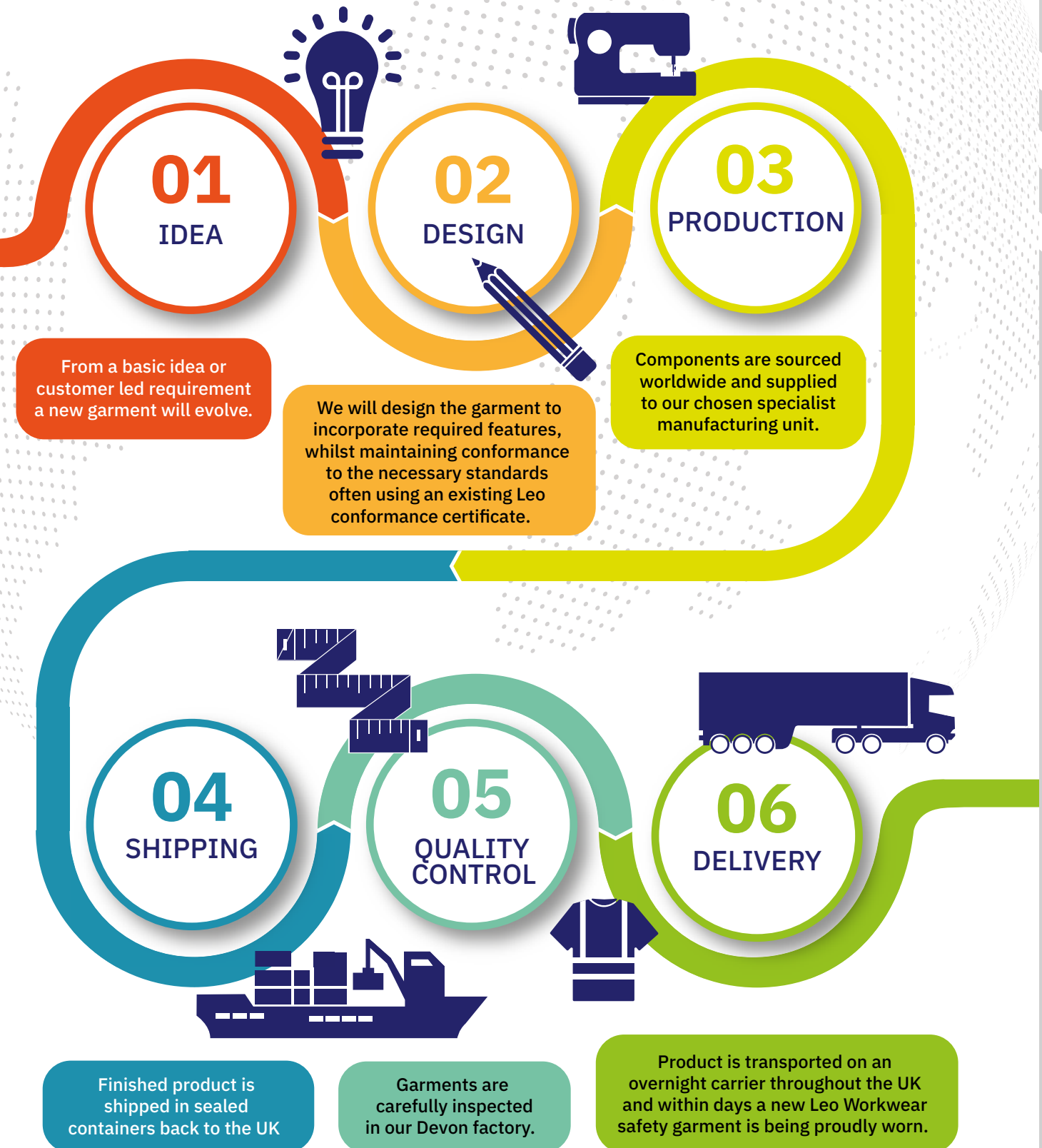


Strict **quality control** at point of manufacture and once arrived in UK

BESPOKE AND SPECIAL PRODUCTION

In addition to the extensive stock range, you can take advantage of Leo Workwear's expertise to design and produce bespoke products under your, or your customer's own brand.

DESIGN TO DELIVERY





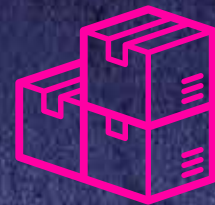
MYLEOWORKWEAR.COM



Improved trading terms



Order at your specific account prices 24/7



Check live stock figures



Access to all product test certification documents



View previous orders and quickly reorder



Track all your orders, whether they were placed online or not



Later guaranteed next day delivery



Fast Lines
Quickly upload orders from Excel or Word



View Back Orders, Invoice History and Unpaid Invoices



Save your frequently purchased products in Favourites or Saved Order Templates

📞 MYLEOWORKWEAR.COM
✉️ HELP@MYLEOWORKWEAR.COM
📍 01271 378904

HIGH VISIBILITY CLOTHING THE STANDARDS EXPLAINED

ISO 20471

Purpose

ISO 20471 specifies the requirements for high visibility clothing, intended to improve the conspicuity of the wearer in areas where the risk of not being seen is high; such as working on roads, on or near a rail track, on airports or seaports.

What components?

A conforming high visibility garments is made up of background material (fluorescent fabric) to provide daytime visibility and retroreflective material (reflective tape) for night-time conspicuity. There are three colours permitted as background material within the standard; fluorescent yellow, fluorescent orange and fluorescent red. These are specified in terms of their luminance and chromaticity co-ordinates.

Retroreflective technologies return a cone of light back towards the source from which it came (such as the headlights on a car); this can be achieved through glass bead technology or prismatic reflective tape technologies.

Which classes?

There are three classes within the standard, class 1, 2 or 3; class 3 offering the highest level of protection and class 1 the lowest. The class of a garment (or ensemble of garments) is defined by the amount of background material and the amount of retroreflective material on a garment. The minimum amounts are defined as follows:

| Material | Class 3 garments | Class 2 garments | Class 1 garments |
|-------------------------------|------------------|------------------|------------------|
| Background material | 0.80 | 0.50 | 0.14 |
| Retroreflective material | 0.20 | 0.13 | 0.10 |
| Combined performance material | N/A | N/A | 0.20 |

Design

The standard sets out a specific design criterion for garments to conform; for example, a class 3 garment must cover the torso and have sleeves with reflective bands and/or trouser legs with reflective bands.

Class 2 + 1 = 3?

ISO 20471 class 3 can be obtained by combining the classes of the upper and lower garment, such as a class 2 anorak with a class 1 trouser, providing the two garments meet the minimum requirements for class 3 when worn together.

Decoration

Most companies will apply a company logo or job-role related text to a garment before it is issued. For a garment to still conform to ISO 20471 once a badge has been applied, the remaining exposed background material must at least meet the minimum requirements specified for that class.

User information and labelling

Garments must be marked and labelled in line with ISO 13688 which specifies the general requirements for protective clothing. This will show information on the manufacturer and the garment's performance, sizing and product code. A user information sheet will include information on how to wash and store the garments as well as any warnings of misuse.

Notified Body

All requirements of the standard must be certified by a notified body in order for a certificate to be issued.

THE TRAFFIC SIGNS MANUAL

In the UK, the Traffic Signs Manual adds that clothing for those working on motorways or high speed roads must conform to ISO 20471 class 3 and that jackets or coveralls must have full length sleeves, two reflective bands encircling the body and two encircling the sleeves with two reflective braces over the shoulders.

"The requirement may be varied to three-quarter-length sleeves where a risk assessment shows full length sleeves would present increased risk due to the activity being undertaken". Those working on motorways and high-speed roads should also wear high visibility trousers complying to ISO 20471 class 1 "where the carrying of large items of equipment or other activities may at any time obscure the visibility of the high visibility jacket."

IMPORTANT STANDARDS IN THIS SECTION



ISO 20471
Specifies the requirements for high visibility clothing.



EN 1149
Specifies the requirements for protection against electrostatic charge.



RIS-3279-TOM
Specifies the requirements for high visibility clothing in the Rail industry.



EN 14116
Specifies the performance requirements for protection against occasional and brief contact with heat and flame

WAIST COATS

NEW GARMENT HIGHLIGHTS



FORELAND
Page 24

HEDDON
Page 26



JACOBSTOWE
Page 41

HUIISH
Page 43

BRANDS IN THIS SECTION



Retromax®
Leo Workwear's brand of quality reflective tape.



Retromax®FR
Leo Workwear's brand of fire-retardant reflective tape.



Coolviz®
A garment specifically designed for working in warmer environments.



TARKA

STANDARD WAISTCOATS

NOT ALL WAISTCOATS ARE CREATED EQUAL

At Leo Workwear we insist that our factories use our specified pattern, fabrics and components to produce a consistent, conforming waistcoat that lasts.

FEATURES:

- Large area for printing/badging on front and rear
- Lightweight and durable material
- Smart & practical grey trim
- Full-length velcro fastener



TARKA

ISO 20471 CLASS 2 WAISTCOAT

FABRIC
100% KNITTED
POLYESTER

TRIM
GREY

FASTENER
VELCRO

LENGTH
75-80cm

SIZES
S-6XL



TARKA
COLOUR Yellow
ITEM CODE W01-Y



TARKA
COLOUR Orange
(RIS-3279-TOM)
ITEM CODE W01-O



TARKA
COLOUR Hi-Vis Red
ITEM CODE W01-R



TARKA
COLOUR Yellow/Orange
ITEM CODE W01-Y/O

RUMSAM

ISO 20471 CLASS 2
ZIPPED ID WAISTCOAT

- FABRIC 100% KNITTED POLYESTER
- LENGTH 75-80CM
- TRIM GREY
- SIZES S-6XL
- FASTENER ZIP

The Rumsam is a cost effective solution when a client demands a zip fastener or needs an identification card holder.



RUMSAM
COLOUR Yellow
ITEM CODE W02-Y

RUMSAM
COLOUR Orange (RIS-3279-TOM)
ITEM CODE W02-O

BRADWORTHY

ISO 20471 CLASS 2
COLOURED YOKE WAISTCOAT

- FABRIC 100% KNITTED POLYESTER
- LENGTH 80CM
- TRIM CONTRAST COLOUR
- SIZES S-4XL
- FASTENER VELCRO



BRADWORTHY
COLOUR Red Yoke/Yellow
ITEM CODE W09-RD/Y



BRADWORTHY
COLOUR Navy Yoke/Yellow
ITEM CODE W09-NV/Y



BRADWORTHY
COLOUR Bottle Yoke/Yellow
ITEM CODE W09-BT/Y

VELATOR

ISO 20471 CLASS 2
MESH BACK WAISTCOAT

- FABRIC 100% KNITTED POLYESTER
- LENGTH 80CM
- TRIM GREY
- SIZES S-6XL
- FASTENER VELCRO

FEATURES:

- Front ID Pocket
- Open Mesh Upper Back



VELATOR
COLOUR Yellow
ITEM CODE W03-Y

OPEN MESH
UPPER BACK

A great garment for identifying different job roles within an organisation whilst still meeting ISO 20471 Class 2.

SLEEVED WAISTCOATS

ALL OUR SLEEVED WAISTCOATS MEET ISO 20471 CLASS 3; THE HIGHEST LEVEL OF PROTECTION.

We insist that our factories use our specific pattern, fabrics and components to produce a consistent, conforming sleeved waistcoat that lasts.

FEATURES:

- Large area for printing/badging on front and rear
- Retromax reflective tape
- Lightweight and durable material
- Smart & practical grey trim
- Full-length velcro fastener



'Shirwell' Sleeved Waistcoat S01-0

GORWELL

ISO 20471 CLASS 3
HALF SLEEVE WAISTCOAT

| | |
|-------------------------------------|--------------------------|
| FABRIC 100% KNITTED POLYESTER | LENGTH 77-82cm |
| TRIM GREY | SIZES S-6XL |
| FASTENER VELCRO | |



GORWELL
COLOUR Yellow
ITEM CODE S02-Y

GORWELL
COLOUR Orange (RIS-3279-TOM)
ITEM CODE S02-O



FORCHES
COLOUR Yellow
ITEM CODE S03-Y

FORCHES
COLOUR Orange (RIS-3279-TOM)
ITEM CODE S03-O

FORCHES

ISO 20471 CLASS 3
3/4 SLEEVE WAISTCOAT

| | |
|-------------------------------------|--------------------------|
| FABRIC 100% KNITTED POLYESTER | LENGTH 77-82cm |
| TRIM GREY | SIZES S-6XL |
| FASTENER VELCRO | |

SHIRWELL

ISO 20471 CLASS 3
SLEEVED WAISTCOAT

| | |
|-------------------------------------|--------------------------|
| FABRIC 100% KNITTED POLYESTER | LENGTH 77-82cm |
| TRIM GREY | SIZES S-6XL |
| FASTENER VELCRO | |



SHIRWELL
COLOUR Yellow
ITEM CODE S01-Y

SHIRWELL
COLOUR Orange (RIS-3279-TOM)
ITEM CODE S01-O

LYNTON

SUPERIOR WAISTCOATS (CLASS 2)

The extremely popular Lynton Superior Waistcoat is a must for wearers who require more features and functionality. A zip fastener and multiple storage solutions make the Lynton perfect for a wide variety of working environments.



MOBILE PHONE POCKET WITH VELCRO-FASTENED FLAP

DOUBLE PEN POCKET WITH D-RING

BELLOVED FRONT STORAGE POCKETS WITH VELCRO-FASTENED FLAP

RETROMAX REFLECTIVE TAPE

FRONT ZIP FASTENER

LARGE AREA FOR PRINTING/BADGING ON FRONT AND REAR

DEEPER ARM HOLES THAN STANDARD

ID POCKET WITH WINDOW TOP OPENING

SCOOPED SIDES TO ALLOW POCKET ACCESS

LYNTON

ISO 20471 CLASS 2* SUPERIOR WAISTCOAT

FABRIC
100% KNITTED
POLYESTER

TRIM
CONTRAST
COLOUR

FASTENER
ZIP

LENGTH
76-81cm

SIZES
XS-6XL



LYNTON

COLOUR Yellow
ITEM CODE W11-Y



LYNTON

COLOUR Orange (RIS-3279-TOM)
ITEM CODE W11-O



LYNTON

COLOUR Yellow/Orange
ITEM CODE W11-Y/O



LYNTON

COLOUR Orange/Yellow
ITEM CODE W11-O/Y



LYNTON

COLOUR Yellow/Hi-Vis Red
ITEM CODE W11-Y/R

Now available in XS
*XS conforms to
ISO 20471 Class 1

LYNTON

SUPERIOR WAISTCOATS (CLASS 1)

WEARERS WHO REQUIRE MORE FEATURES AND FUNCTIONALITY NEED TO BE SEEN IN A LYNTON SUPERIOR WAISTCOAT.

A zip fastener and multiple storage solutions make the Lynton perfect for a wide variety of working environments.

FEATURES:

- Scooped Sides allowing Pocket Access
- Deeper Arm Holes than Standard
- Large Area for Printing/Badging on Front and Rear
- Double Pen Pocket with D Ring
- ID Pocket with Window, Top Opening with Velcro Tab
- Mobile Phone Pocket
- 2 x Front Bellowed Storage Pockets

So much choice! Combined with the class 2 versions, the Lynton is now available in 18 different colour combinations.



'Lynton' Superior Waistcoat W11-O/GN

LYNTON

ISO 20471 CLASS 1
SUPERIOR WAISTCOAT

- FABRIC: 100% KNITTED POLYESTER
- LENGTH: 76-81cm
- TRIM: COLOURED
- SIZES: XS-6XL
- FASTENER: ZIP



LYNTON
COLOUR Yellow/Grey
ITEM CODE W11-Y/GY

LYNTON
COLOUR Yellow/Black
ITEM CODE W11-Y/BK

Now available in XS

LYNTON
COLOUR Yellow/Bottle Green
ITEM CODE W11-Y/BT



LYNTON
COLOUR Yellow/Deep Sky Blue
ITEM CODE W11-Y/DS

LYNTON
COLOUR Yellow/Royal Blue
ITEM CODE W11-Y/RO

LYNTON
COLOUR Yellow/Navy
ITEM CODE W11-Y/NV

LYNTON NEW!
COLOUR Yellow/Purple
ITEM CODE W11-Y /PR

LYNTON
COLOUR Hi-Vis Red/Grey
ITEM CODE W11-R/GY



LYNTON
COLOUR Orange/Emerald Green
ITEM CODE W11-O/GN

LYNTON
COLOUR Orange/ Royal Blue
ITEM CODE W11-O/RO

LYNTON
COLOUR Orange/Navy
ITEM CODE W11-O/NV

LYNTON NEW!
COLOUR Orange/Grey
ITEM CODE W11-O/GY

LYNTON NEW!
COLOUR Orange/Black
ITEM CODE W11-O/BK

WRAFTON

SUPERIOR SLEEVED WAISTCOATS

The Wrafton Superior Sleeved Waistcoat has many useful features and a number of storage solutions making it perfect for a wide variety of working environments. There are now 6 different colour combinations available with the addition of red/grey.

FEATURES:

- Mobile Phone Pocket with Velcro-Fastened Flap
- Large Area for Printing/ Badging on Front and Rear
- Scooped Sides to allow Pocket Access
- 2 Bellowed Front Storage Pockets with Velcro-Fastened Flap
- Double Pen Pocket with D-Ring
- ID Pocket with Window Top Opening
- Front Zip Fastener
- Retromax Reflective Tape
- Velcro-Fastened Cuff Adjusters

Improved! Now featuring Velcro cuff adjusters for additional practicality.



'Wrafton' Superior Sleeved Waistcoat S12-O/GY

WRAFTON

ISO 20471 CLASS 3 SUPERIOR SLEEVED WAISTCOATS

FABRIC
100% KNITTED
POLYESTER

FASTENER
ZIP

LENGTH
77-82CM

SIZES
XS-6XL



WRAFTON
COLOUR Yellow/Orange
TRIM Orange
ITEM CODE S12-Y/O

WRAFTON
COLOUR Orange (RIS-3279-TOM)
TRIM Grey
ITEM CODE S12-O

WRAFTON
COLOUR Yellow
TRIM Grey
ITEM CODE S12-Y



WRAFTON **NEW!**
COLOUR Hi-Vis Red/Grey
TRIM Grey
ITEM CODE S12-R/GY

WRAFTON
COLOUR Yellow/Grey
TRIM Grey
ITEM CODE S12-Y/GY

WRAFTON **NEW!**
COLOUR Orange/Grey
TRIM Grey
ITEM CODE S12-O/GY

FORELAND

SUPERIOR WAISTCOATS WITH TABLET POCKET

With tablets becoming essential to our everyday working lives, the need to have our devices onsite has become increasingly important. Keep your device safe and at hand with the new Foreland Superior Waistcoat.



SMART CONTRAST TRIM

ID POCKET WITH VELCRO TAB

1 X BELLOVED STORAGE POCKET WITH VELCRO FASTENED FLAP

SCOOPED SIDES TO ALLOW POCKET ACCESS

2 X MIC LOOPS

PLENTY OF SPACE FOR BADGING

LARGE REINFORCED ZIP FASTENED TABLET POCKET WITH INTERNAL HEADPHONE EYELET

RETROMAX REFLECTIVE TAPE

FRONT ZIP FASTENER

FORELAND

ISO 20471 CLASS 2 SUPERIOR WAISTCOAT WITH TABLET POCKET

FABRIC
100% KNITTED
POLYESTER

FASTENER
ZIP

SIZES
S-4XL

TRIM
CONTRAST
COLOUR

LENGTH
76-81cm



FORELAND

COLOUR Yellow
ITEM CODE W24-Y



FORELAND

COLOUR Orange (RIS-3279-TOM)
ITEM CODE W24-O



- Tablet pocket measures 23cm w x 28cm h (zip opening 20cm wide)
- Can take tablets up to 10.5" (Not including a case)

This pocket isn't limited to just storing tablets! It can fit many other large and useful objects such as an A5 Notebook.



HEDDON

SUPERIOR SLEEVED WAISTCOATS WITH TABLET POCKET

With tablets becoming essential to our everyday working lives, the need to have our devices onsite has become increasingly important. Keep your device safe and at hand with the new Heddon Sleeved Superior Waistcoat.



SMART CONTRAST TRIM

ID POCKET WITH VELCRO TAB

RETROMAX REFLECTIVE TAPE

1 X BELLOVED STORAGE POCKET WITH VELCRO FASTENED FLAP

VELCRO-FASTENED CUFF ADJUSTERS

2 X MIC LOOPS

PLENTY OF SPACE FOR BADGING

LARGE REINFORCED ZIP FASTENED TABLET POCKET WITH INTERNAL HEADPHONE EYELET

SCOOPED SIDES TO ALLOW POCKET ACCESS

HEDDON

COLOUR Orange (RIS-3279-TOM)
ITEM CODE S24-O

HEDDON

COLOUR Yellow
ITEM CODE S24-Y



- Tablet pocket measures 23cm w x 28cm h (zip opening 20cm wide)
- Can take tablets up to 10.5" (Not including a case)

FABRIC
100% KNITTED POLYESTER

FASTENER
ZIP

LENGTH
77-82CM

SIZES
S-4XL

INTRODUCING THE TABLET POCKET

Keep your tablet, phone, wallet or keys secure with the introduction of the large tablet pocket, introduced throughout the Leo Workwear range.

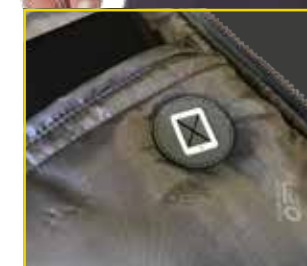


◀ FORELAND
Page 24

▶ HEDDON
Page 26

◀ TORRINGTON
Page 92

▶ DARTMOOR
Page 110



▶ Tablet pocket with headphone eyelet on the Torrington Bodywarmer

COOLVIZ®

WAISTCOATS

COOLVIZ WAISTCOATS ARE THE IDEAL SOLUTION WHEN WORKING IN WARMER CONDITIONS.

Crafted from a unique fabric; the open knit construction allows increased airflow when compared to standard waistcoat material, whilst still fully meeting the requirements of ISO 20471.

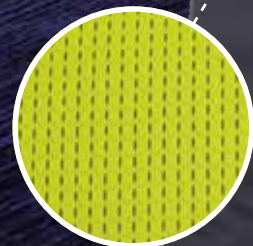
FEATURES:

- Unique Airflow Fabric allowing for Increased Circulation
- Mobile Phone Pocket with Velcro-Fastened Flap
- Double Pen Pocket with D-Ring
- Improved Fit with Deeper Armholes
- Retromax Reflective Tape
- Solid Polyester Panels for Enhanced Garment Rigidity
- Large Area for Printing/Badging on Front and Rear
- ID Pocket with Window Top Opening
- Bellowed Front Storage Pockets with Velcro-Fastened Flap
- Scooped Sides to allow Pocket Access
- Velcro-Fastened Cuff Adjusters
- Front Zip Fastener



AIRFLOW MESH

Our unique fabric achieves increased airflow whilst still meeting ISO 20471.



'Cobbaton' Coolviz Waistcoat W20-Y



ARLINGTON
COLOUR Yellow
ITEM CODE W04-Y

ARLINGTON
COLOUR Orange (RIS-3279-TOM)
ITEM CODE W04-O

ARLINGTON

ISO 20471 CLASS 2
COOLVIZ WAISTCOAT

FABRIC
100% KNITTED POLYESTER
120 GSM AIRFLOW MESH

TRIM GREY | **LENGTH** 76-81cm

FASTENER VELCRO | **SIZES** S-6XL

FEATURES:

- Improved Fit with Deeper Armholes
- Scooped Sides allowing Pocket Access
- Solid Polyester Panels for Enhanced Garment Rigidity

COBBATON

ISO 20471 CLASS 2
COOLVIZ SUPERIOR
WAISTCOAT

FABRIC
100% KNITTED POLYESTER
120 GSM AIRFLOW MESH

TRIM GREY | **LENGTH** 76-81cm

FASTENER ZIP | **SIZES** S-6XL

FEATURES:

- See page opposite



COBBATON
COLOUR Yellow
ITEM CODE W20-Y

COBBATON
COLOUR Orange (RIS-3279-TOM)
ITEM CODE W20-O

COOLVIZ®

SLEEVED WAISTCOATS

Our Sleeved Coolviz Waistcoats are perfect when working in warmer conditions with the need to conform to ISO 20471 Class 3. Crafted from a unique fabric; the open knit construction allows increased airflow when compared to standard waistcoat material, whilst still fully meeting the requirements of ISO 20471.

UNIQUE AIRFLOW FABRIC ALLOWING FOR INCREASED CIRCULATION

MOBILE PHONE POCKET WITH VELCRO-FASTENED FLAP

DOUBLE PEN POCKET WITH D-RING

FRONT ZIP FASTENER

RETROMAX REFLECTIVE TAPE

VELCRO-FASTENED CUFF ADJUSTERS

SOLID POLYESTER PANELS FOR ENHANCED GARMENT RIGIDITY

LARGE AREA FOR PRINTING/BADGING ON FRONT AND REAR

ID POCKET WITH WINDOW TOP OPENING

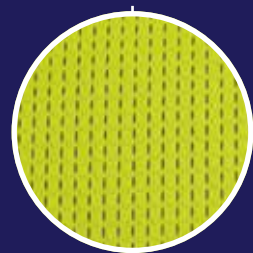
2 BELLOWED FRONT STORAGE POCKETS WITH VELCRO-FASTENED FLAP

SCOOPED SIDES TO ALLOW POCKET ACCESS



AIRFLOW MESH P120

Our unique fabric achieves increased airflow whilst still meeting ISO 20471.



BURRINGTON

COLOUR Yellow
ITEM CODE S20-Y



FREMINGTON
COLOUR Orange (RIS-3279-TOM)
ITEM CODE S04-O

FREMINGTON

COLOUR Yellow
ITEM CODE S04-Y

FREMINGTON

ISO 20471 CLASS 3
COOLVIZ SLEEVED
WAISTCOAT

FABRIC
100% KNITTED POLYESTER
120 GSM AIRFLOW MESH

TRIM
GREY LENGTH
77-82cm

FASTENER
VELCRO SIZES
S-6XL

BURRINGTON

ISO 20471 CLASS 3
COOLVIZ SUPERIOR
SLEEVED WAISTCOAT

FABRIC
100% KNITTED POLYESTER
120 GSM AIRFLOW MESH

TRIM
GREY LENGTH
77-82cm

FASTENER
ZIP SIZES
S-6XL

FEATURES:

- See page opposite

Improved! Now featuring Velcro cuff adjusters for additional practicality.



BURRINGTON
COLOUR Yellow
ITEM CODE S20-Y

BURRINGTON
COLOUR Orange (RIS-3279-TOM)
ITEM CODE S20-O

RAILWAY & ANTI-ENTANGLEMENT WAISTCOATS

WE ARE PLEASED TO OFFER AN EXTENSIVE RANGE OF WAISTCOATS THAT FEATURE BURSTABLE SIDE AND SHOULDER SEAMS TO HELP ELIMINATE THE RISK OF ENTANGLEMENT.

The orange waistcoats in this section are perfect for use on or near the railway and conform to RIS-3279-TOM, the new rail industry standard (formerly GO/RT 3279).

This standard requires that garments must be a specific orange colour to ensure the rail workers are visible to approaching trains or traffic.

In addition to the rail industry, these waistcoats also offer an additional level of safety to anyone working with machinery or moving parts.



'Umberleigh' Railway Stud Waistcoat W26-O

LAPFORD

ISO 20471 CLASS 2
RAILWAY VELCRO WAISTCOAT

| | | |
|-------------------------------------|---------------------------|-----------------------|
| FABRIC 100% KNITTED POLYESTER | FASTENER VELCRO | SIZES S-3XL |
| TRIM GREY | LENGTH 69-75 CM | |

FEATURES:

- Velcro Front Fastener
- Quick Release Velcro Side & Shoulder Seams
- Elasticated Action Back

LAPFORD
COLOUR Orange
(RIS-3279-TOM)
ITEM CODE W14-O



EGGESFORD

ISO 20471 CLASS 2
RAILWAY ZIP WAISTCOAT

| | | |
|-------------------------------------|---------------------------|-----------------------|
| FABRIC 100% KNITTED POLYESTER | FASTENER ZIP | SIZES S-4XL |
| TRIM GREY | LENGTH 69-75 CM | |

FEATURES:

- Zip Front Fastener
- Quick Release Velcro Side & Shoulder Seams
- Elasticated Action Back

EGGESFORD
COLOUR Orange
(RIS-3279-TOM)
ITEM CODE W15-O



UMBERLEIGH

ISO 20471 CLASS 2
RAILWAY STUD WAISTCOAT

| | | |
|-------------------------------------|---------------------------|-----------------------|
| FABRIC 100% KNITTED POLYESTER | FASTENER STUDED | SIZES S-4XL |
| TRIM GREY | LENGTH 69-75 CM | |

FEATURES:

- Studded Front Fastener
- Quick Release Velcro Side & Shoulder Seams
- Elasticated Action Back

UMBERLEIGH
COLOUR Orange
(RIS-3279-TOM)
ITEM CODE W26-O





COPPLESTONE

ISO 20471 CLASS 2
RAILWAY PLUS WAISTCOAT

FABRIC
POLY/COTTON WITH STAIN AND
WATER REPELLENT FINISH, 150D

TRIM
ORANGE | **LENGTH**
69-75cm

FASTENER
ZIP | **SIZES**
S-3XL

FEATURES:

- Zip Front Fastener
- Quick Release Size-Adjusting Studded Sides & Shoulder Seams
- Elasticated Action Back & Sides



COPPLESTONE
COLOUR Orange (RIS-3279-TOM)
ITEM CODE W16-O

CHAPELTON

ISO 20471 CLASS 2
UNDERGROUND WAISTCOAT

FABRIC
100% KNITTED POLYESTER

TRIM
ORANGE | **LENGTH**
72-77cm

FASTENER
STUDED | **SIZES**
S-3XL*

FEATURES:

- Studded Front Fastener
- Quick Release Velcro Side & Shoulder Seams

* This garment follows the London Underground sizing specification and has been designed to wear over several layers of clothing and therefore offers a very generous fit.



CHAPELTON
COLOUR Orange (RIS-3279-TOM)
ITEM CODE W18-O

BARNSTAPLE

SUPERIOR RAILWAY &
ANTI-ENTANGLEMENT WAISTCOATS

The Barnstaple is a fantastic solution when working in areas with the risk of entanglement, with its burstable shoulder and side seams.

The additional benefits of an elasticated back and multiple storage solutions make this an extremely practical and functional waistcoat to be seen in.

FABRIC
100% KNITTED
POLYESTER | **FASTENER**
ZIP | **SIZES**
S-6XL

TRIM
GREY | **LENGTH**
76-81cm



BARNSTAPLE
COLOUR Orange (RIS-3279-TOM)
ITEM CODE W22-O

BARNSTAPLE
COLOUR Yellow (non RIS-3279-TOM)
ITEM CODE W22-Y

FEATURES:

- Zip Front & Quick Release Velcro Side & Shoulder Seams
- Elasticated Action Back
- ID Pocket with Window Top Opening
- Mobile Phone Pocket with Velcro-Fastened Flap
- 2 Bellowed Front Storage Pockets with Velcro-Fastened Flap
- Double Pen Pocket with D-Ring
- Retromax Reflective Tape
- Deeper Arm Holes than Standard
- Scooped Sides allowing Pocket Access



'Barnstaple' Superior Railway and Anti-Entanglement Waistcoat W22-O

EN 14116:2015 LIMITED FLAME SPREAD WAISTCOATS

WHEN YOU NEED TO BE SEEN BUT ALSO REQUIRE PROTECTION FROM THE HAZARDS OF HEAT AND FLAME, OUR WIDE RANGE OF LIMITED FLAME SPREAD (LFS) GARMENTS ARE THE PERFECT CHOICE.

All EN 14116 garments have been upgraded to meet the requirements of the 2015 revision, all seams have now been covered by FR tape, to ensure protection against occasional and brief contact with small igniting flames.

LFS

COVERED SEAMS
TO PREVENT
FLAMING DEBRIS

SELF-COLOURED FLAME
RETARDANT BINDING

PLASTIC FIRE RETARDANT
ZIP FASTENER

EN 14116
KNITTED POLYESTER

RETROMAX FR FLAME
RETARDANT REFLECTIVE TAPE

GARMENT CONFORMS
TO 25 WASH CYCLES



Improved!
These garments are now certified to conform up to 25 washes (previously 5).



MILFORD
COLOUR Yellow
ITEM CODE W08-Y

MILFORD
COLOUR Orange (RIS-3279-TOM)
ITEM CODE W08-O

MILFORD

ISO 20471 CLASS 2
LFS WAISTCOAT

FABRIC
EN 14116 KNITTED
POLYESTER

TRIM
SELF COLOUR

LENGTH
75-80cm

FASTENER
FLAME RETARDANT
VELCRO

SIZES
S-6XL

FEATURES:

- Flame Retardant Velcro Front Fastener
- EN 14116 Knitted Polyester
- Self-Coloured Flame Retardant Binding
- Retromax FR Flame Retardant Reflective Tape
- Covered Seams to Prevent Flaming Debris

LFS

MEETH

ISO 20471 CLASS 2
LFS ZIP WAISTCOAT

FABRIC
EN 14116 KNITTED
POLYESTER

TRIM
SELF COLOUR

LENGTH
75-80cm

FASTENER
FLAME
RETARDANT ZIP

SIZES
S-6XL

FEATURES:

- See page opposite

LFS



MEETH
COLOUR Yellow
ITEM CODE W23-Y

MEETH
COLOUR Orange (RIS-3279-TOM)
ITEM CODE W23-O

EN 14116:2015 LIMITED FLAME SPREAD SLEEVED WAISTCOATS

WHEN YOU NEED TO BE SEEN BUT ALSO REQUIRE PROTECTION FROM THE HAZARDS OF HEAT AND FLAME, OUR WIDE RANGE OF LIMITED FLAME SPREAD (LFS) GARMENTS ARE THE PERFECT CHOICE.

All EN 14116 garments have been upgraded to meet the requirements of the 2015 revision, all seams have now been covered by FR tape, to ensure protection against occasional and brief contact with small igniting flames.

LFS

SELF-COLOURED FLAME
RETARDANT BINDING

PLASTIC FIRE
RETARDANT ZIP
FASTENER

GARMENT CONFORMS
TO 25 WASH CYCLES

RETROMAX FR
FLAME RETARDANT
REFLECTIVE TAPE

EN 14116
KNITTED POLYESTER

COVERED SEAMS TO
PREVENT FLAMING DEBRIS



Improved!
These garments are now
certified to conform up to
25 washes (previously 5).

CRANFORD

ISO 20471 CLASS 3
LFS ¾ SLEEVE WAISTCOAT

FABRIC
EN 14116
KNITTED POLYESTER

TRIM
SELF COLOUR | LENGTH
77-82cm

FASTENER
FLAME RETARDANT
VELCRO | SIZES
S-6XL

LFS

CRANFORD
COLOUR Yellow
ITEM CODE S10-Y



PARKHAM
COLOUR Yellow
ITEM CODE S11-Y

PARKHAM
COLOUR Orange (RIS-3279-TOM)
ITEM CODE S11-O

PARKHAM

ISO 20471 CLASS 3
LFS SLEEVED WAISTCOAT

FABRIC
EN 14116
KNITTED POLYESTER

TRIM
SELF COLOUR | LENGTH
77-82cm

FASTENER
FLAME RETARDANT
VELCRO | SIZES
S-6XL

LFS

MERTON

ISO 20471 CLASS 3
LFS SLEEVED ZIP WAISTCOAT

FABRIC
EN 14116
KNITTED POLYESTER

TRIM
SELF COLOUR | LENGTH
77-82cm

FASTENER
FLAME
RETARDANT ZIP | SIZES
S-6XL

LFS

MERTON
COLOUR Yellow
ITEM CODE S15-Y

MERTON
COLOUR Orange (RIS-3279-TOM)
ITEM CODE S15-O



EN 14116:2015 LFS ANTI-STATIC WAISTCOATS

WE ARE DELIGHTED TO OFFER A RANGE OF WAISTCOATS DESIGNED FOR MULTIPLE RISK ENVIRONMENTS.

The garments meet with three important standards; ISO 20471 for high visibility, EN 14116:2015 for protection against heat and flame and the EN 1149-5 anti-static standard for protection against electrostatic discharge in areas where there is risk of explosion.

FEATURES:

- EN 14116 Protection against Heat and Flames
- EN 1149 Anti-Static Protection
- EN 14116 Knitted Polyester Trim, Self Coloured
- Covered Seams to Prevent Flaming Debris
- Retromax FR Flame Retardant Reflective Tape
- Flame Retardant Velcro Front Fastener (*Clifton*)
- Flame Retardant Zip Front Fastener (*Jacobstowe*)
- V-Neck Design
- Higher neck and drop back for added body protection



ISO 20471 LFS ANTI-STATIC FABRIC

98% EN 14116 & EN 1149 Knitted Polyester 130gsm, 2% Anti-static thread.

'Clifton' LFS Anti-Static Waistcoat W19-O



CLIFTON
COLOUR Yellow
ITEM CODE W19-Y

CLIFTON
COLOUR Orange (RIS-3279-TOM)
ITEM CODE W19-O

CLIFTON

ISO 20471 CLASS 2 LFS ANTI-STATIC WAISTCOAT

FABRIC
EN 14116 & EN 1149
KNITTED POLYESTER

TRIM
SELF COLOUR

LENGTH
78-83CM

FASTENER
FLAME RETARDANT
VELCRO

SIZES
S-6XL

FEATURES:

- See page opposite



JACOBSTOWE

ISO 20471 CLASS 2 LFS ANTI-STATIC ZIP WAISTCOAT

FABRIC
EN 14116 & EN 1149
KNITTED POLYESTER

TRIM
SELF COLOUR

LENGTH
78-83CM

FASTENER
FLAME
RETARDANT ZIP

SIZES
S-6XL



JACOBSTOWE
COLOUR Yellow
ITEM CODE W25-Y

JACOBSTOWE
COLOUR Orange (RIS-3279-TOM)
ITEM CODE W25-O

FEATURES:

- See page opposite



EN 14116:2015 LFS ANTI-STATIC SLEEVED WAISTCOATS



WHEN YOU NEED TO BE SEEN BUT ALSO REQUIRE PROTECTION FROM THE HAZARDS OF HEAT AND FLAME, OUR WIDE RANGE OF LIMITED FLAME SPREAD GARMENTS ARE THE PERFECT CHOICE.

These garments are designed to protect workers against occasional and brief contact with small igniting flames.

HIGHER NECK FOR ADDED BODY PROTECTION

SELF-COLOURED FLAME RETARDANT BINDING

FLAME RETARDANT FRONT FASTENER. VELCRO (MESHAW & STICKLEPATH) OR ZIP (HUISH)

RETROMAX FR FLAME RETARDANT REFLECTIVE TAPE

EN 14116 KNITTED POLYESTER

COVERED SEAMS TO PREVENT FLAMING DEBRIS

DROP BACK FOR ADDED BODY PROTECTION



MESHAW

ISO 20471 CLASS 3 LFS ANTI-STATIC SLEEVED WAISTCOAT

FABRIC
EN 14116 & EN 1149
KNITTED POLYESTER

TRIM
SELF COLOUR



FASTENER
FLAME RETARDANT
VELCRO

LENGTH
80-85cm

SIZES
S-6XL

MESHAW
COLOUR Yellow
ITEM CODE S17-Y

MESHAW
COLOUR Orange (RIS-3279-TOM)
ITEM CODE S17-O

STICKLEPATH

ISO 20471 CLASS 3
LFS ANTI-STATIC
¾ SLEEVE WAISTCOAT

FABRIC
EN 14116 & EN 1149
KNITTED POLYESTER

TRIM
SELF COLOUR

LENGTH
80-85cm

FASTENER
FLAME RETARDANT
VELCRO

SIZES
S-6XL



FEATURES:

- See page opposite



STICKLEPATH
COLOUR Yellow
ITEM CODE S18-Y

STICKLEPATH
COLOUR Orange (RIS-3279-TOM)
ITEM CODE S18-O



HUISH
COLOUR Yellow
ITEM CODE S25-Y

HUISH
COLOUR Orange (RIS-3279-TOM)
ITEM CODE S25-O

HUISH

ISO 20471 CLASS 3 LFS ANTI-STATIC SLEEVED ZIP WAISTCOAT

FABRIC
EN 14116 & EN 1149
KNITTED POLYESTER

TRIM
SELF COLOUR

LENGTH
80-85cm

FASTENER
FLAME RETARDANT ZIP

SIZES
S-6XL

FEATURES:

- See page opposite



STAND OUT FROM THE CROWD

NON-ISO 20471 REFLECTIVE WAISTCOATS

NEW GARMENT HIGHLIGHTS



COMMODORE
Page 45

FEATURES:

- 25 colour combinations available
- Durable knitted polyester fabric
- Large area for printing/badging on front and rear
- Retromax Reflective tape
- Scooped sides allowing pocket access
- Improved fit with deeper armholes

BRANDS IN THIS SECTION



Retromax®
Leo Workwear's brand of quality reflective tape.



COMMODORE

SINGLE COLOUR REFLECTIVE ZIP WAISTCOAT (NON ISO 20471)

FIT FOR ANY PODIUM.

The Commodore joins our extensive range of coloured reflective waistcoats in the fun and fresh new colours: Gold, Silver and Bronze. So, whether you're representing a customers' brand, identifying a different job role or even rewarding employee of the month, this waistcoat is sure to make the wearer stand out from the crowd.



COMMODORE
COLOUR Gold
ITEM CODE W35-GO

COMMODORE
COLOUR Silver
ITEM CODE W35-SV

COMMODORE
COLOUR Bronze
ITEM CODE W35-BZ

FABRIC
100% KNITTED
POLYESTER

LENGTH
76CM

TRIM
GREY

SIZES
XS-4XL

FASTENER
ZIP

These waistcoats are perfectly suited for events such as music festivals or sporting occasions.

Warning: These garments are sold for wearer identification purposes (stewarding/event management etc) and are not sold as a safety aid, they do not meet ISO 20471.

PILTON

SINGLE COLOUR WAISTCOATS

STAND OUT FROM THE CROWD WITH OUR PILTON REFLECTIVE COLOURED WAISTCOATS.

The Pilton is perfectly suited for events such as musical festivals or sporting occasions. Combined with the dual-coloured options there are now 22 colour combinations to choose from, making them great for representing a customers' brand or for identifying many different wearer job roles within an organisation.

IMPROVED FIT WITH DEEPER ARMHOLES

LARGE AREA FOR PRINTING/BADGING ON FRONT AND REAR

DURABLE AND SMART GREY TRIM

RETROMAX REFLECTIVE TAPE

SCOOPED SIDES ALLOWING POCKET ACCESS

These waistcoats are perfectly suited for events such as music festivals or sporting occasions.



'Pilton' Single Colour Waistcoat W05-GN

PILTON

SINGLE COLOUR REFLECTIVE WAISTCOAT (NON ISO 20471)

FABRIC
100% KNITTED
POLYESTER

LENGTH
76CM

TRIM
GREY

SIZES
XS-4XL

FASTENER
VELCRO

Warning: These garments are sold for wearer identification purposes (stewarding/event management etc) and are not sold as a safety aid, they do not meet ISO 20471.



PILTON
COLOUR Pink
ITEM CODE W05-PK

PILTON
COLOUR Red
ITEM CODE W05-RD

PILTON
COLOUR Maroon
ITEM CODE W05-MR



PILTON
COLOUR Sky Blue
ITEM CODE W05-SK

PILTON
COLOUR Royal Blue
ITEM CODE W05-RO



PILTON
COLOUR Lime
ITEM CODE W05-LM

PILTON
COLOUR Emerald Green
ITEM CODE W05-GN

PILTON
COLOUR Bottle Green
ITEM CODE W05-BT



PILTON
COLOUR Navy
ITEM CODE W05-NV

PILTON
COLOUR Purple
ITEM CODE W05-PR



PILTON
COLOUR White
ITEM CODE W05-WH

PILTON
COLOUR Grey
ITEM CODE W05-GY

PILTON
COLOUR Black
ITEM CODE W05-BK

PILTON

DUAL COLOUR REFLECTIVE WAISTCOATS

BECOME INSTANTLY RECOGNISABLE WITH THE PILTON DUAL COLOUR REFLECTIVE WAISTCOAT.

Combined with the single colour version, The Pilton is available in an incredible 22 colour combinations and so is great for representing a customers' brand or for identifying many different wearer job roles within an organisation.

LARGE AREA FOR PRINTING/
BADGING ON FRONT AND REAR

IMPROVED FIT WITH
DEEPER ARMHOLES

RETROMAX
REFLECTIVE TAPE

DURABLE AND SMART
CONTRASTING TRIM

SCOOPED SIDES
ALLOWING POCKET ACCESS

These waistcoats are perfectly suited for events such as music festivals or sporting occasions.



'Pilton' Dual Colour Waistcoat W05-PK/RO

PILTON

DUAL COLOUR REFLECTIVE WAISTCOAT (NON ISO 20471)

FABRIC 100% KNITTED POLYESTER | TRIM COLOURED | FASTENER VELCRO | LENGTH 76cm | SIZES XS-4XL

Warning: These garments are sold for wearer identification purposes (stewarding/event management etc) and are not sold as a safety aid, they do not meet ISO 20471.



PILTON
COLOUR Sky/Royal Blue
ITEM CODE W05-SK/RO

PILTON
COLOUR White/Royal Blue
ITEM CODE W05-WH/RO

PILTON
COLOUR White/Red
ITEM CODE W05-WH/RD

PILTON
COLOUR White/Black
ITEM CODE W05-WH/BK



PILTON
COLOUR Lime/Royal Blue
ITEM CODE W05-LM/RO

PILTON
COLOUR Lime/Red
ITEM CODE W05-LM/RD

PILTON
COLOUR Lime/Emerald Green
ITEM CODE W05-LM/GN

PILTON
COLOUR Pink/Royal Blue
ITEM CODE W05-PK/RO

PILTON
COLOUR Pink/Lime
ITEM CODE W05-PK/LM

POLO SHIRTS & T-SHIRTS

IMPORTANT STANDARDS IN THIS SECTION



ISO 20471
Specifies the requirements for high visibility clothing.



RIS-3279-TOM
Specifies the requirements for high visibility clothing in the Rail industry.



EN 13758-2
Specifies the requirements for protection against solar ultraviolet radiation.

NEW GARMENT HIGHLIGHTS



PEPPERCOMBE
Page 61

WRINGCLIFF
Page 69



PUTSBOROUGH
Page 73

WATERMOUTH
Page 75

BRANDS IN THIS SECTION



Retromax®
Leo Workwear's brand of quality reflective tape.



Coolviz®
A garment specifically designed for working in warmer environments.



Comfort™
A comfortable poly/cotton fabric with all cotton content against the skin.



EcoViz® rp
100% recycled polyester conforming to ISO 20471 for high visibility.



Coolviz® Plus
A lightweight, quick-drying polyester for warmer working conditions.



Coolviz® Ultra
A super-soft, hydrophobic and anti-microbial polyester.



COOLMAX®
Performance moisture-wicking fabric, a trademark of the Lycra Company.



FABRIC BRAND GUIDE: POLOS & T-SHIRTS



We are delighted to introduce Ecoviz® RP, a fully conforming 100% recycled polyester. Whilst this new fabric matches the wicking performance, weight and feel of the previous Coolviz fabric, the manufacture of EcoViz® RP produces 50% less emissions and 50% less carbon dioxide to significantly reduce the impact of production on our environment.



FABRIC SPEC:

185gsm EcoViz Recycled Polyester

WHY CHOOSE ECOVIZ RP GARMENTS?

- Environmental impact - crafted from recycled polyester
- Performance in warmer weather conditions
- Great moisture wicking properties
- Sun protection to UPF 40+
- Durable fabric which keeps its shape

QUICK PRODUCT GUIDE:



ROCKHAM
Page 59

WOOLSERLY
Page 67



BRAUNTON
Page 71

BICKLETON
Page 137



100% recycled polyester



Compared to standard polyester
EcoViz® produces:



50% less emissions



50% less carbon dioxide



Recycled clothing is chopped into pieces

Pieces are processed into raw polyester material

Polymerisation produces ECO CIRCLE™ fibres from Jiaren, Japan

We take these fibres to create EcoViz® rp - a polyester fabric that fully conforms to ISO 20471

FABRIC BRAND GUIDE: POLOS & T-SHIRTS



Tried and tested over many years, our poly/cotton fabric is all about wearer comfort; achieved by natural cotton next to the skin, whilst wicking polyester fibres channel moisture away from the body. All styles are cleverly designed with strategically positioned reflective tapes which allow for garment stretch and optimal wearer movement.



The garments are crafted from lightweight and quick-drying birdseye polyester and benefit from under-arm mesh panels for additional ventilation. The use of segmented reflective tape allows for improved garment stretch and breathability when compared to standard tapes.



FABRIC SPEC:

200gsm Comfort Poly/Cotton

WHY CHOOSE LEO COMFORT GARMENTS?

- Cotton Content against the Skin
- Sun Protection to UPF 40+
- Choice - Polos, T-Shirts and Vests available

QUICK PRODUCT GUIDE:



CROYDE
Page 59

SWIMBRIDGE
Page 67



ASHFORD
Page 71

NEWPORT
Page 71



FABRIC SPEC:

130gsm Coolviz Plus Birdseye Polyester

Fluorescent red garments 160gsm

WHY CHOOSE COOLVIZ PLUS PRODUCTS?

- Performance in Warmer Conditions
 - Lightweight & Quick Drying
 - Sun Protection to UPF 40+
- Segmented Reflective Tape for Garment Stretch & Breathability
 - Under-arm Mesh Ventilation (excluding P14 & P15 models)
 - Dual-Colour Options

QUICK PRODUCT GUIDE:



WOOLACOMBE
Page 61

PEPPERCOMBE
Page 61

WATERSMEET
Page 63



MORTEHOE
Page 63

WRINGCLIFF
Page 69

BARRICANE
Page 68



LARKSTONE
Page 73

CAPSTONE
Page 75



FABRIC BRAND GUIDE: POLOS & T-SHIRTS



Offering exceptional performance in the hottest conditions, Coolviz Ultra is excellent at managing moisture, channelling sweat to the outer, where it can be evaporated quickly. It's really soft to touch and very comfortable against the skin.

FABRIC SPEC:

160gsm Coolviz Ultra Polyester

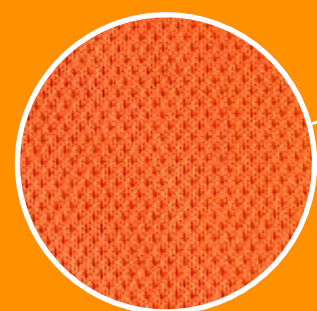
WHY CHOOSE COOLVIZ ULTRA PRODUCTS?

- Exceptional performance in the hottest conditions
- Soft handle fabric prevents irritation
- Intelligent hydrophobic fabric manages moisture
- Anti-microbial finish to manage odour and bacterial build-up
- Segmented reflective tape for garment stretch and breathability
- Sun protection to UPF 40+
- Certified to 50 wash cycles, twice the industry standard

QUICK PRODUCT GUIDE:



BROADSANDS
Page 65



LEO PERFORMANCE RANGE POWERED BY COOLMAX®

COOLMAX®, the performance fabric trusted by athletes to keep them cool and dry. Exceptional moisture wicking technology combines with outstanding high-visibility performance to create garments that will keep you cool and comfortable in the warmest working conditions.

FABRIC SPEC:

150gsm 55% COOLMAX Polyester, 45% Polyester

WHY CHOOSE PERFORMANCE COOLMAX PRODUCTS?

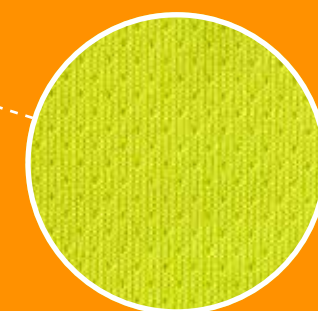
- Exceptional wicking performance manages moisture
- Modern blade collar with YKK® stud placket
 - Sun protection to UPF 40+
- Inherently Anti-Microbial to manage odour and bacterial build-up
 - Certified to 50 wash cycles, twice the industry standard
 - Segmented reflective tape for garment stretch and breathability

QUICK PRODUCT GUIDE:



PUTSBOROUGH
Page 73

WATERMOUTH
Page 75



POLO SHIRTS

ISO 20471 CLASS 2
POLO SHIRTS

WE ARE DELIGHTED TO OFFER AN EXTENSIVE RANGE OF HIGH VISIBILITY POLO SHIRTS AND, WITH FOUR DIFFERENT FABRICS TO CHOOSE FROM, THERE'S A LEO WORKWEAR POLO SHIRT TO SUIT ANY CUSTOMERS' REQUIREMENTS.

When it come to our polo shirts, you will see the difference too; there are lots of extra features not always found on the market which provide wearer comfort and exceptional freedom of movement. The Coolviz and Coolviz Plus ranges have been upgraded to include UV protection to UPF40+, which now means that every Leo polo shirt ensures wearers stay safe in the sun.

ALL OUR POLO SHIRTS FEATURE:

- Longer braces for ease of putting on and taking off
- Gap in tape on side seam provides garment stretch
- Lots of space for badging or embroidery to front and rear
- Smart contrast collar
- 3-button placket
- Split hem with extended back
- RIS-3279-TOM compliant (orange only)
- UV protection to UPF 40+ meeting EN 13758-2



'Rockham' Polo Shirt P02-O

SHIRTS

CROYDE

ISO 20471 CLASS 2
COMFORT POLO SHIRT



FABRIC
200GSM COMFORT
POLY/COTTON

TRIM
NAVY COLLAR

LENGTH
73-89cm

SIZES
S-6XL



CROYDE
COLOUR Orange (RIS-3279-TOM)
ITEM CODE P01-O

CROYDE
COLOUR Yellow
ITEM CODE P01-Y

For a sleeved equivalent,
see P05, Swimbridge (page 67)

ROCKHAM

ISO 20471 CLASS 2
COOLVIZ POLO SHIRT

FABRIC
185GSM ECOVIZ
RECYCLED POLYESTER

TRIM
GREY COLLAR

LENGTH
73-89cm

SIZES
S-6XL



ROCKHAM
COLOUR Orange (RIS-3279-TOM)
ITEM CODE P02-O

For a sleeved equivalent,
see P06, Woolserly (page 67)

ROCKHAM
COLOUR Yellow
ITEM CODE P02-Y

COOLVIZ PLUS POLO SHIRTS

Our segmented reflective tape is a real improvement when compared with standard tapes, it stretches with the garment for excellent freedom of movement and provides enhanced breathability.

UNIQUE CHEVRON REFLECTIVE TAPE DESIGN FOR IMPROVED BREATHABILITY AND GARMENT STRETCH

MESH-VENTILATED UNDER ARMS AND SIDE SEAMS

LIGHTWEIGHT AND QUICK-DRYING BIRDSEYE POLYESTER

3 BUTTON PLACKET

GENEROUS FIT

SPLIT HEM DESIGN



'Woolacombe' Polo Shirt P03-Y

WOOLACOMBE

ISO 20471 CLASS 2
COOLVIZ PLUS POLO SHIRT

FABRIC
130GSM COOLVIZ PLUS
BIRDSEYE POLYESTER

TRIM
LIGHT GREY COLLAR

LENGTH
73-89CM | SIZES
S-6XL



For a sleeved equivalent,
see P08, Barricane (page 68)



WOOLACOMBE
COLOUR Orange (RIS-3279-TOM)
ITEM CODE P03-O

WOOLACOMBE
COLOUR Yellow
ITEM CODE P03-Y

PEPPERCOMBE

ISO 20471 CLASS 2
DUAL COLOUR COOLVIZ PLUS POLO SHIRT

FABRIC
COOLVIZ PLUS
BIRDSEYE POLYESTER

TRIM
GREY

LENGTH
73-89CM | SIZES
S-6XL



For a sleeved equivalent, see P15
Wringcliff (page 69)



PEPPERCOMBE
COLOUR Yellow/Grey
FABRIC WEIGHT 130gsm
ITEM CODE P14-Y/GY

PEPPERCOMBE
COLOUR Hi-Vis Red/Grey
FABRIC WEIGHT 160gsm
ITEM CODE P14-R/GY

COOLVIZ PLUS POLO SHIRTS

FEATURES

- Unique Chevron Reflective Tape design for improved Breathability and Garment Stretch
- Mesh-Ventilated Under Arms and Side Seams
- Lightweight and Quick-Drying Birdseye Polyester
- Split Hem Design
- 3 Button Placket
- Generous Fit



'Mortehoe' Polo Shirt P11-O/NV

SHIRTS



WATERSMEET
COLOUR Yellow
ITEM CODE P10-Y/NV

WATERSMEET
COLOUR Orange
ITEM CODE P10-O/NV

WATERSMEET

ISO 20471 CLASS 1
COOLVIZ PLUS POLO SHIRT

FABRIC
130GSM COOLVIZ PLUS
BIRDSEYE POLYESTER

TRIM
NAVY

LENGTH
73-89cm

SIZES
S-6XL



MORTEHOE

ISO 20471 CLASS 2
COOLVIZ PLUS POLO SHIRT

FABRIC
130GSM COOLVIZ PLUS
BIRDSEYE POLYESTER

TRIM
NAVY

LENGTH
73-89cm

SIZES
S-6XL



MORTEHOE
COLOUR Yellow
ITEM CODE P11-Y/NV

MORTEHOE
COLOUR Orange
ITEM CODE P11-O/NV

COOLVIZ ULTRA POLO SHIRTS

Featuring the very latest in fabric innovation and reflective tape technology, The Broadsands Coolviz Ultra Polo Shirt offers truly exceptional performance in the hottest weather conditions.

The intelligent hydrophobic fabric draws sweat to the surface where it can evaporate, to keep your skin dry when the temperature rises. Not only do Coolviz Ultra polo shirts look great, they are a practical option too, with certification to 50 wash cycles at 40°C; twice the industry standard.

FEATURES:

- Hydrophobic fabric draws moisture to the outer where it is evaporated
- Split hem design with extended back
- 3 button placket with contrast grey lining and buttons
- Anti-microbial finish to manage odour and bacterial build-up
- Soft handle fabric prevents irritation
- Segmented reflective tape for garment stretch and improved breathability
- RIS-3279-TOM compliant (orange only)
- UV protection to UPF40+ meeting EN13758-2
- Tested to 50 wash cycles



'Broadsands' Polo Shirt P09-O

SHIRTS

BROADSANDS

ISO 20471 CLASS 2
COOLVIZ ULTRA POLO SHIRT

FABRIC
160GSM COOLVIZ
ULTRA POLYESTER

TRIM
SELF
COLOURED

LENGTH
73-89CM

SIZES
S-6XL



BROADSANDS
COLOUR Yellow
ITEM CODE P09-Y



BROADSANDS
COLOUR Orange (RIS-3279-TOM)
ITEM CODE P09-O

SLEEVED POLO SHIRTS

ISO 20471 CLASS 3 SLEEVED POLO SHIRTS

We are delighted to offer an extensive range of high visibility sleeved polo shirts and, with three different fabrics to choose from, there's a Leo Workwear polo shirt to suit any customers' requirements. When it come to our polo shirts, you will see the difference too; there are lots of extra features not always found on the market which provide wearer comfort and exceptional freedom of movement.

The Coolviz and Coolviz Plus ranges have been upgraded to include UV protection to UPF40+, which now means that every Leo polo shirt ensures wearers stay safe in the sun.

ALL LEO POLO SHIRTS FEATURE:

- Longer braces for ease of putting on and taking off
- Gap in tape on side seam provides garment stretch
- Lots of space for badging or embroidery to front and rear
- Smart contrast collar
- 3-button placket
- Split hem with extended back
- RIS-3279-TOM compliant for use on the railway (orange only)
- UV protection to UPF 40+ meeting EN 13758-2



'Swimbridge' Sleeved Polo Shirt P05-Y

SWIMBRIDGE

ISO 20471 CLASS 3 COMFORT SLEEVED POLO SHIRT

FABRIC
200GSM COMFORT
POLY/COTTON

TRIM
NAVY
COLLAR

LENGTH
73-89cm

SIZES
S-6XL



For a short sleeve equivalent, see P01, Croyde (page 59)



SWIMBRIDGE
COLOUR Orange (RIS-3279-TOM)
ITEM CODE P05-O

SWIMBRIDGE
COLOUR Yellow
ITEM CODE P05-Y



WOOLSERY
COLOUR Yellow
ITEM CODE P06-Y

WOOLSERY
COLOUR Orange (RIS-3279-TOM)
ITEM CODE P06-O

WOOLSERY

ISO 20471 CLASS 3 COOLVIZ SLEEVED POLO SHIRT

FABRIC
185GSM ECOVIZ
RECYCLED
POLYESTER

TRIM
GREY
COLLAR

LENGTH
73-89cm

SIZES
S-6XL



For a short sleeve equivalent, see P02, Rockham (page 59)

SLEEVED POLO SHIRTS

ISO 20471 SLEEVED POLO SHIRTS



3 BUTTON PLACKET

LIGHTWEIGHT AND QUICK-DRYING BIRDSEYE POLYESTER

MESH-VENTILATED UNDER ARMS AND SIDE SEAMS

GENEROUS FIT

UNIQUE CHEVRON REFLECTIVE TAPE DESIGN FOR IMPROVED BREATHABILITY AND GARMENT STRETCH

SPLIT HEM DESIGN



BARRICANE
COLOUR Yellow
ITEM CODE P08-Y

BARRICANE
COLOUR Orange
(RIS-3279-TOM)
ITEM CODE P08-O

BARRICANE

ISO 20471 CLASS 3
COOLVIZ PLUS SLEEVED
POLO SHIRT

FABRIC
130GSM COOLVIZ PLUS
BIRDSEYE POLYESTER

TRIM
LIGHT GREY
COLLAR

SIZES
S-6XL

LENGTH
73-89cm



SLEEVED POLO SHIRTS



WRINGCLIFF
COLOUR Orange/Navy
FABRIC WEIGHT 130gsm
ITEM CODE P15-O/NV



WRINGCLIFF
COLOUR Yellow/Navy
FABRIC WEIGHT 130gsm
ITEM CODE P15-Y/NV



WRINGCLIFF
COLOUR Hi-Vis Red/Grey
FABRIC WEIGHT 160gsm
ITEM CODE P15-R/GY

WRINGCLIFF
COLOUR Orange/Grey
FABRIC WEIGHT 130gsm
ITEM CODE P15-O/GY

WRINGCLIFF
COLOUR Yellow/Grey
FABRIC WEIGHT 130gsm
ITEM CODE P15-Y/GY

WRINGCLIFF

ISO 20471 CLASS 2
DUAL COLOUR COOLVIZ PLUS
SLEEVED POLO SHIRT

FABRIC
COOLVIZ PLUS POLYESTER

LENGTH
73-89cm

SIZES
S-6XL



New! The Wringcliff is a fantastic sleeved polo shirt with a striking fluorescent and contrast colour design. See our dual colour Bideford Cargo Trousers for the perfect accompanying product on page 130.

T-SHIRTS

ISO 20471 CLASS 2
T-SHIRTS

THERE'S SO MUCH CHOICE WHEN IT COMES TO LEO WORKWEAR T-SHIRTS; WITH FOUR DIFFERENT FABRICS TO CHOOSE FROM THERE IS A T-SHIRT TO SUIT ANY CUSTOMER'S REQUIREMENTS.

ALL LEO T-SHIRTS FEATURE:

- Generous Fit
- Split-Hem Design
- Strategically Positioned Reflective Tape for optimal Wearer Movement



'Braunton' T-Shirt T02-0

ASHFORD

ISO 20471 CLASS 2
SLEEVELESS T-SHIRT

FABRIC
200GSM COMFORT
POLY/COTTON

TRIM
GREY

LENGTH
77-89cm

SIZES
S-6XL



ASHFORD
COLOUR Yellow
ITEM CODE V01-Y

ASHFORD
COLOUR Orange (RIS-3279-TOM)
ITEM CODE V01-O



NEWPORT
COLOUR Yellow
ITEM CODE T01-Y

NEWPORT
COLOUR Orange (RIS-3279-TOM)
ITEM CODE T01-O

NEWPORT

ISO 20471 CLASS 2
COMFORT T-SHIRT

FABRIC
200GSM COMFORT
POLY/COTTON

TRIM
GREY NECK

LENGTH
71-87cm

SIZES
S-6XL



BRAUNTON

ISO 20471 CLASS 2
COOLVIZ T-SHIRT

FABRIC
185GSM ECOVIZ
RECYCLED POLYESTER

TRIM
GREY NECK

LENGTH
71-87cm

SIZES
S-6XL



BRAUNTON
COLOUR Yellow
ITEM CODE T02-Y

BRAUNTON
COLOUR Orange (RIS-3279-TOM)
ITEM CODE T02-O

T-SHIRTS

ISO 20471 CLASS 2 T-SHIRTS

We are excited to introduce our new Performance T-Shirt, the Putsborough, which not only looks great, it performs to a very high standard. Crafted from COOLMAX® polyester, the garment has exceptional moisture wicking capabilities for warmer weather conditions, making it an excellent base layer to wear under a breathable jacket.

PUTSBOROUGH FEATURES:

- Inherently wicking COOLMAX® fabric absorbs moisture and channels it away from the body
- Modern blade collar with YKK® plastic stud-fastened placket; suitable for the food industry
- UV protection to UPF 40+ meeting EN 13758-2
- Inherently anti-microbial fabric for protection against the build-up of bacteria and odour
- Certified to 50 wash cycles at 40°C - twice the industry standard
- Segmented reflective tape for garment stretch and improved breathability
- Split-hem design with extended back



'Putsborough' T-Shirt T12-0

HITDRESS

LARKSTONE

ISO 20471 CLASS 2 COOLVIZ PLUS T-SHIRT



FABRIC
130GSM COOLVIZ PLUS BIRDSEYE POLYESTER

TRIM
LIGHT GREY NECK

LENGTH
71-87cm

SIZES
S-6XL

LEO
COOLVIZ PLUS™

LARKSTONE
COLOUR Orange (RIS-3279-TOM)
ITEM CODE T03-O

- FEATURES:**
- Lightweight and quick-drying birdseye polyester
 - Segmented reflective tape for garment stretch and improved breathability
 - Mesh ventilated under-arms and side seams
 - UV protection to UPF 40+ meeting EN 13758-2
 - Smart contrast neck
 - RIS-3279-TOM compliant (orange only)
 - Split-hem with extended back
 - Generous fit

For a sleeved equivalent, see T08, Capstone (page 75)

PUTSBOROUGH

ISO 20471 CLASS 2 PERFORMANCE T-SHIRT

FABRIC
150GSM 55% COOLMAX POLYESTER, 45% POLYESTER

TRIM
GREY

LENGTH
71-87cm

SIZES
S-6XL

COOLMAX®



- FEATURES:**
- See page opposite
- For a sleeved equivalent, see T13, Watermouth (page 75)

PUTSBOROUGH
COLOUR Orange (RIS-3279-TOM)
ITEM CODE T12-O

PUTSBOROUGH
COLOUR Yellow
ITEM CODE T12-Y



COOLMAX® is a trademark of The LYCRA Company.

SLEEVED T-SHIRTS

ISO 20471 CLASS 3 SLEEVED T-SHIRTS

WE ARE DELIGHTED TO INTRODUCE OUR FIRST SLEEVED T-SHIRTS, ALL CONFORMING TO ISO 20471 CLASS 3.

Customers can choose from the lightweight and quick-drying properties of our Coolviz Plus fabric or the exceptional wicking properties of COOLMAX®, used in our Performance range.



SMART
CONTRAST
NECK

GENEROUS
FIT

MESH VENTILATED
UNDER-ARMS AND
SIDE SEAMS

UV PROTECTION
TO UPF 40+
MEETING
EN 13758-2

SPLIT-HEM
WITH
EXTENDED
BACK

SEGMENTED
REFLECTIVE TAPE FOR
GARMENT STRETCH
AND IMPROVED
BREATHABILITY

RIS-3279-TOM
COMPLIANT
(ORANGE ONLY)

LIGHTWEIGHT AND
QUICK-DRYING
BIRDSEYE POLYESTER



CAPSTONE
COLOUR Yellow
ITEM CODE T08-Y

CAPSTONE
COLOUR Orange (RIS-3279-TOM)
ITEM CODE T08-O

CAPSTONE

ISO 20471 CLASS 3
COOLVIZ PLUS
SLEEVED T-SHIRT

FABRIC
130GSM COOLVIZ PLUS
BIRDSEYE POLYESTER

TRIM
LIGHT GREY NECK

LENGTH
71-87CM

SIZES
S-6XL



FEATURES:

- See page opposite

For a short sleeve equivalent, see T03, Larkstone (page 73)

WATERMOUTH

ISO 20471 CLASS 3
PERFORMANCE T-SHIRT

FABRIC
150GSM 55% COOLMAX
POLYESTER, 45% POLYESTER

TRIM
GREY

LENGTH
71-87CM

SIZES
S-6XL



WATERMOUTH
COLOUR Yellow
ITEM CODE T13-Y

WATERMOUTH
COLOUR Orange (RIS-3279-TOM)
ITEM CODE T13-O

FEATURES:

- Inherently wicking COOLMAX® fabric absorbs moisture and channels it away from the body
- Modern blade collar with YKK®plastic stud-fastened placket; suitable for the food industry
- UV protection to UPF 40+ meeting EN 13758-2
- Inherently anti-microbial fabric for protection against the build-up of bacteria and odour
- Certified to 50 wash cycles at 40°C – twice the industry standard
- Segmented reflective tape for garment stretch and improved breathability
- Split-hem design with extended back

With its exceptional wicking properties, the Watermouth works as an excellent base layer to wear under our Marisco High Performance Waterproof Anorak, see page 106.

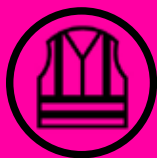
For a short sleeve equivalent, see T12, Putsborough (page 73)

COOLMAX® is a trademark of The LYCRA Company.

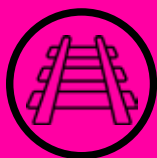
SWEAT SHIRTS & SNOODS



IMPORTANT STANDARDS IN THIS SECTION



ISO 20471
Specifies the requirements for high visibility clothing.



RIS-3279-TOM
Specifies the requirements for high visibility clothing in the Rail industry.

BRANDS IN THIS SECTION



Retromax®+
Leo Workwear's brand of premium performance reflective tape.



HeiQ VIROBLOCK®
A leading brand in anti-viral and anti-bacterial fabric treatments.



Microban®
A global leader in anti-microbial and odour control fabric treatments.



Ecoviz® AL
Air Layer fabric which is warm & comfortable whilst lightweight, made from recycled bottles.



Repreve®
The world's leading recycled fibre made from recycled plastic bottles.

SWEATSHIRTS

ISO 20471 CLASS 3 SWEATSHIRTS

TOUGH, WARM AND COMFORTABLE; EVERYTHING YOU WOULD WANT IN A WORK SWEATSHIRT.

The Leo sweatshirt range is crafted from our diamond quilt fabric providing superior comfort, with 100% cotton against the skin, and fantastic durability, with 100% polyester on the outer. The range has now been upgraded to conform to 50 wash cycles, twice the industry standard.



300gsm DIAMOND QUILT
50% Polyester, 50% Cotton

Outer Layer:
100% polyester fabric for durability
Inner Layer:
100% cotton against the skin for wearer comfort



'Winkleigh' Sweatshirt SS05-O



WINKLEIGH
COLOUR Yellow
ITEM CODE SS05-Y

WINKLEIGH
COLOUR Orange
(RIS-3279-TOM)
ITEM CODE SS05-O

WINKLEIGH

ISO 20471 CLASS 3
CREW NECK SWEATSHIRT

FABRIC
300GSM DIAMOND QUILT,
50% POLYESTER, 50% COTTON

TRIM
GREY (SS05-Y) | **LENGTH**
ORANGE (SS05-O) | **72-84cm**

SIZES
S-6XL

FEATURES:

- Ribbed Neck, Cuffs & Hem
- Certified to 50 wash cycles, twice the industry standard
- Retromax+ Stretch Reflective Tape

BRYNSWORTHY

ISO 20471 CLASS 3
¼ ZIP SWEATSHIRT

FABRIC
300GSM DIAMOND QUILT,
50% POLYESTER, 50% COTTON

TRIM
GREY | **LENGTH**
| **68-84cm**

SIZES
S-6XL

FEATURES:

- Ribbed Cuffs & Hem
- Certified to 50 wash cycles, twice the industry standard
- ¼ Zip Neck With Puller
- Retromax+ Stretch Reflective Tape



BRYNSWORTHY
COLOUR Yellow
ITEM CODE SS01-Y

BRYNSWORTHY
COLOUR Orange
(RIS-3279-TOM)
ITEM CODE SS01-O

SWEATSHIRTS

ISO 20471 CLASS 3 SWEATSHIRTS

GOODLEIGH

ISO 20471 CLASS 3 HOODED SWEATSHIRT

FABRIC
300GSM DIAMOND QUILT,
50% POLYESTER, 50% COTTON

TRIM GREY | **LENGTH** 68-84cm | **SIZES** S-6XL

FEATURES:

- Ribbed Cuffs & Hem,
- Certified to 50 wash cycles, twice the industry standard
- Double Fabric Hood with Flat Lace Draw Cord
- Kangaroo Pouch Pocket
- Retromax+ Stretch Reflective Tape



GOODLEIGH
COLOUR Yellow
ITEM CODE SS04-Y

GOODLEIGH
COLOUR Orange
(RIS-3279-TOM)
ITEM CODE SS04-O

Buy quality and it will last longer; all Leo Workwear sweatshirts are now certified to 50 wash cycles, twice the industry standard.

'Goodleigh' Sweatshirt SS04-Y



SAUNTON
COLOUR Yellow
ITEM CODE SS02-Y

SAUNTON
COLOUR Orange
(RIS-3279-TOM)
ITEM CODE SS02-O

SAUNTON

ISO 20471 CLASS 3
FULL ZIP HOODED
SWEATSHIRT

FABRIC
300GSM DIAMOND QUILT,
50% POLYESTER, 50% COTTON

TRIM GREY | **LENGTH** 68-84cm

SIZES
S-6XL

FEATURES:

- Ribbed Cuffs & Hem
- Certified to 50 wash cycles, twice the industry standard
- Front Zip-Fastener With Puller
- Double Fabric Hood With Shock-Cord
- Zipped Front Pockets With Pullers
- Retromax+ Stretch Reflective Tape

LIBBATON

ISO 20471 CLASS 3
FULL ZIP TRACK TOP

FABRIC
300GSM DIAMOND QUILT,
50% POLYESTER, 50% COTTON

TRIM GREY | **LENGTH** 68-84cm

SIZES
S-6XL

FEATURES:

- Ribbed Cuffs & Hem
- Certified to 50 wash cycles, twice the industry standard
- Chunky Front Zip-Fastener with Puller
- Zipped Hand Pockets with Pullers
- Retromax+ Stretch Reflective Tape
- Stand-Up Collar



LIBBATON
COLOUR Yellow
ITEM CODE SS03-Y

LIBBATON
COLOUR Orange
(RIS-3279-TOM)
ITEM CODE SS03-O

SNOOD SWEATSHIRTS

ISO 20471 CLASS 3
SNOOD SWEATSHIRT

Introducing the Combesgate Snood Sweatshirt, crafted from EcoViz® AL (AirLayer) fabric, made from recycled plastic bottles, which provides warmth and comfort without the bulk and excellent stretch properties for freedom of movement. The built-in snood with Microban® treatment not only protects from the growth of bacteria but provides additional warmth on those especially chilly days.

FEATURES:

- EcoViz® Air Layer fabric provides warmth without the bulk
- Spandex stretch fabric provides excellent freedom of movement
- Built-in snood from stretch fabric with Microban® antimicrobial treatment
- Retromax+ premium reflective tape with stretch elastic
- Stay-put thumbhole at cuff for a perfect arm fit
- Hand warmer pockets
- Extended drop back



'Combesgate' Snood SS06-Y



COMBESGATE

COLOUR Yellow
ITEM CODE SS06-Y



COMBESGATE

COLOUR Orange
(RIS-3279-TOM)
ITEM CODE SS06-O

COMBESGATE

ISO 20471 CLASS 3
SNOOD SWEATSHIRT

FABRIC

ECOVIZ AL (AIRLAYER): 270GSM BLEND OF REPREEVE® RECYCLED POLYESTER, STANDARD POLYESTER & SPANDEX.
SNOOD: STRETCH RECYCLED POLYESTER

TRIM

SELF COLOURED

LENGTH

80-96cm

LENGTH

S-6XL



SNOODS

HEIQ VIROBLOCK® RECYCLED 3-LAYER SNOOD

THE NEW SNOOD FROM LEO WORKWEAR, IT'S THE PEACE OF MIND YOU WANT FROM A FACE COVERING; OFFERING A FANTASTIC COMBINATION OF PROTECTION, WARMTH, AND COMFORT.

Crafted from a recycled stretch polyester, the snood offers three layers of defence, an outer fabric with innovative antiviral HeiQ Viroblock technology, a middle filtration layer and a comfortable mesh inner layer with antimicrobial finish. The size adjustment toggle means you can wear it however you like whilst the contoured design around the nose and around the eyes ensures ultimate comfort.

FEATURES:

- HeiQ Viroblock® Antiviral Technology
- Recycled polyester inner and outer layer
- Filtration layer, filters out microscopic particles
- Comfort size adjustment toggle
- Contoured design
- Inner layer with antimicrobial finish
- Smart grey finish perfectly complements Leo garment trims



VIROBLOCK
COLOUR Grey
ITEM CODE SN01-GY

VIROBLOCK®

VIROBLOCK® RECYCLED 3-LAYER SNOOD

This innovative Swiss Technology makes the fabric resistant to harmful microbes. Treated with a biocide to protect it from microbes and germs.

Active ingredient: Reaction mass of titanium dioxide and silver chloride. This technology has been proven effective against SARS-COV2-COVID 19 in the laboratory.

FABRIC 3 layers of defence

Outer Layer: Recycled durable polyester with Spandex stretch for comfort with HeiQ Viroblock® treatment.

Middle Layer: Meltblown felt provides a bacterial barrier and filters out microscopic infectious particles.

Inner Layer: Recycled polyester mesh provides against-the-skin comfort with an anti-microbial treatment that ensures bacterial and odour control.



HeiQ, HeiQ Viroblock and Viroblock are trademarks or registered trademarks owned by HeiQ Materials AG.



JACKETS & ANORAKS

IMPORTANT STANDARDS IN THIS SECTION



ISO 20471
Specifies the requirements for high visibility clothing.



RIS-3279-TOM
Specifies the requirements for high visibility clothing in the Rail industry.



EN 343
Specifies the requirements for protection against rain, measuring waterproofness and water vapour resistance.



EN 14360
Specifies the performance requirements for protection against impact from above with high energy droplets.

NEW GARMENT HIGHLIGHTS



MARISCO
Page 106

DARTMOOR
Page 110



BRANDS IN THIS SECTION



Retromax®
Leo Workwear's brand of quality reflective tape.



Ecoviz 10K
A recycled polyester conforming to ISO 20471 offering great protection from the rain.



LTEC® 3K+
PU polyester offering good protection from the rain.



LTEC® 20K
3-layer waterproof, windproof and breathable high-performance fabric.



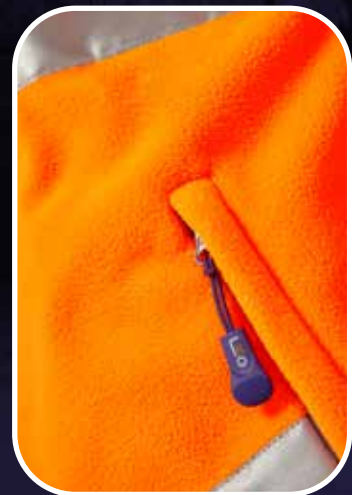
LTEC® 10K
2-layer laminated polyester offering great protection from the rain.

HARTLAND FLEECE JACKET

ISO 20471 CLASS 3

**WARM, COMFORTABLE
AND TIMELESS; NO
HI-VIS WARDROBE IS
COMPLETE WITHOUT
A FLEECE JACKET.**

The Hartland is a fine example with its angled reflective tape design and striking contrast grey fabric in the most dirt-prone areas. Perfect for when you need to be seen but need that little extra warmth.



'Hartland' Fleece Jacket F01-0

HARTLAND

ISO 20471 CLASS 3 FLEECE JACKET

FABRIC
300GSM ANTI-PILL FLEECE

FASTENER
INTERACTIVE
YKK ZIP

LENGTH
70-77CM

TRIM
GREY

SIZES
S-6XL

FEATURES:

- Interactive YKK Front Zipper with Puller
- Will Interact with our Interactive Foul Weather Jackets
- Zipped Front Pockets with Pullers
- Shock-Cord Hem Adjuster

 **INTERACTIVE
ZIPPER**
See pages 104-105



HARTLAND
COLOUR Yellow
ITEM CODE F01-Y

HARTLAND
COLOUR Orange (RIS-3279-TOM)
ITEM CODE F01-O

BUCKLAND SOFTSHELL JACKET

ISO 20471 CLASS 3

OUR EVER-POPULAR
BUCKLAND SOFTSHELL
JACKET IS THE EPITOME
OF VERSATILITY.

It's perfect for a multitude of job roles
such as warehouse duties, parcel
deliveries, building sites or working
on the railway.

Crafted from a three-layer fabric;
the smooth and stretchy outer layer
is great for badging whilst the inner
micro-fleece layer provides warmth
and comfort against the skin.

In between sits a windproof
and water-resistant membrane
to provide some protection
from the elements.

FEATURES:

- Interactive YKK Front Zipper
with Puller & Garage
- Will Interact with our Interactive
Foul Weather Jackets
- Zipped Front Hand Pockets
with Pullers
- Semi-Concealed Zipped Chest
Pocket with Puller
- Shock-Cord Hem Adjuster
- Cuff-Adjuster



'Buckland' Softshell Jacket SJ01-0



BUCKLAND
COLOUR Yellow/Grey
ITEM CODE SJ01-Y

BUCKLAND
COLOUR Orange
(RIS-3279-TOM)
ITEM CODE SJ01-O

BUCKLAND

ISO 20471 CLASS 3 SOFTSHELL JACKET

FABRIC
100% STRETCH POLYESTER TWILL,
3-LAYER, WITH INTERNAL MICRO-FLEECE

FASTENER
INTERACTIVE
YKK ZIP

TRIM
GREY

LENGTH
70-86cm

SIZES
S-6XL

 **INTERACTIVE
ZIPPER**
See pages 104-105



COLOUR CONFIGURATION ON
SMALL & MEDIUM SIZES ONLY

TORRINGTON BODYWARMER

ISO 20471 CLASS 2

**OUR TORRINGTON
BODYWARMER IS A GREAT
MULTI-SEASONAL PRODUCT.**

The snug fit, warm quilt lining and elasticated arm-hole draft defenders ensure you stay warm, whilst the water repellent outer fabric provides some protection when the weather turns wet.

A host of storage pockets make the Torrington as practical as it is versatile.



New improved look! The Torrington now features a modern and stylish angled tape design to match our Softshell and Fleece Jackets.

'Torrington' Bodywarmer BW01-Y

TORRINGTON

ISO 20471 CLASS 2 BODYWARMER

FABRIC
300D PU COATED POLYESTER

FASTENER
INTERACTIVE
YKK ZIP

TRIM
GREY

LENGTH
75-87CM

SIZES
S-6XL

FEATURES:

- Elasticated Arm-Hole Draft Defender
- Interactive YKK Front Zipper with Puller
- Will Interact with our Interactive Foul Weather Jackets
- Mobile Phone Pocket, Hand-Warmer Pockets
- Front Storage Pockets
- Fleece-lined Collar
- Warm Quilt Lining & Water Repellent Outer Fabric
- Tablet pocket measures 23cm w x 28cm h (zip opening 20cm wide)
- Can take tablets up to 10.5" (not including a case)



**INTERACTIVE
ZIPPER**
See pages 104-105



TORRINGTON
COLOUR Yellow
ITEM CODE BW01-Y



TORRINGTON
COLOUR Orange (RIS-3279-TOM)
ITEM CODE BW01-O

FABRIC BRAND GUIDE: FOUL WEATHER

LTEC 3K+

Garments crafted from LTEC 3K+ offer good protection from the rain. All jacket styles feature a warm quilt or fleece lining to ensure wearers stay warm and dry when hard at work. Styles in this range are packed with essential features such as full-length storm flaps, Lycra storm cuffs and multiple storage solutions for great functionality in foul weather conditions.

WHY CHOOSE LTEC 3K+ PRODUCTS?

- Good protection from the rain
- 3,000mm+ rating on the hydrostatic head test
- More than double the class 3 requirement specified in EN343 for water penetration
- All jackets are warm with quilt or fleece linings
- Great value garments packed with essential features

QUICK PRODUCT GUIDE:



TAWSTOCK
Page 98



MARWOOD
Page 100

CHIVENOR
Page 114

BICKINGTON
Page 115



APPLEDORE
Page 118



LTEC 10K

LTEC 10K is a 2-layer fabric which is waterproof, windproof and breathable. EcoViz® 10K is also a 2-layer fabric which offers the same levels of protection, only it is made from 89% recycled polyester which, by comparison, results in a significant reduction in the emissions produced during the manufacturing process. Garments made from these fabrics are extremely popular as they provide exceptional levels of protection at affordable prices.

WHY CHOOSE LTEC 10K AND ECOVIZ® 10K PRODUCTS?

- Great protection from the rain
- 10,000mm rating on the hydrostatic head test
- More than seven times the class 3 requirement specified in EN343 for water penetration
 - Highly breathable to EN343 Class 3
 - Hydrophilic membrane allows inner moisture to escape
- Windproof membrane helps eliminate wearer chill
 - Excellent performance in all weather conditions

QUICK PRODUCT GUIDE:



CLOVELLY
Page 102

EXMOOR
Page 112



DARTMOOR
Page 110



INSTOW
Page 119

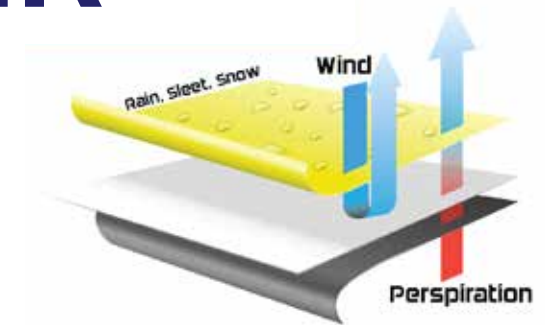


NORTHAM
Page 124

FABRIC BRAND GUIDE: FOUL WEATHER



Pushing the boundaries of performance, our new garments crafted from LTEC 20K are the ultimate way of staying dry, safe and seen in the harshest weather conditions without compromising on design. LTEC 20K boasts an unrivalled specification, a 3-layer fabric which is waterproof, highly breathable and windproof.



HIGH PERFORMANCE 3 LAYER SYSTEM

Face Fabric
Teflon® DWR coated lightweight face fabric

Membrane
Hydrophobic & microporous PTFE membrane

Backing
Comfortable 20D Tricot backing protects the membrane

WHY CHOOSE LTEC 20K PRODUCTS?

- Ultimate protection from the rain
- Performance without compromise on design
- 3-layer performance fabric
- 20,000mm rating on the hydrostatic head test
- Meets the requirements of the rain tower test specified in EN 14360 for impact from above with high energy droplets
- Meets EN343 4:4 the new highest standard specified for waterproofness and breathability
- Highly breathable and windproof
- Meets the highest rating specified in EN 343 for breathability
- Garments feature waterproof zips

3-LAYER PERFORMANCE:

Outer Layer: Lightweight (75D) polyester stretch twill with Teflon® DWR coating

Middle Layer: Hydrophobic & microporous PTFE membrane

Inner Layer: Comfortable 20D tricot backing protects the membrane

QUICK PRODUCT GUIDE:



MARISCO
Page 106

LUNDY
Page 126

| | |
|--|--|
| <p>ISO 20471</p> <p>Conforms to ISO 20471 for high visibility. Marisco Jacket - Class 3 Lundy Overtrouser - Class 2</p> | <p>20,000mm</p> <p>Waterproof to 20,000mm on the hydrostatic head test</p> |
| <p>EN 14360</p> <p>Meets the requirements of the rain tower test specified in EN 14360 for impact from above with high energy droplets.</p> | <p>LIGHTWEIGHT</p> <p>Lightweight 175gsm fabric: ultimate protection from the elements without the bulk</p> |
| <p>EN 343 4:4</p> <p>Conforms to highest class of water penetration and breathability specified in EN 343</p> | <p>WINDPROOF</p> <p>A completely windproof PTFE membrane</p> |
| <p>RIS-3279-TOM</p> <p>Conforms to RIS-3279-TOM (formerly G0/RT 3279) for use on the rail. (Orange model only)</p> | <p><5 RET</p> <p>Highly breathable - The lower the rating the more breathable. ≤15 required for Class 4.</p> |



TAWSTOCK ANORAKS

ISO 20471 CLASS 3

WHILST THE TAWSTOCK IS OUR STANDARD HIGH VISIBILITY ANORAK, THAT STANDARD HAS BEEN SET VERY HIGH.

The garment is packed with essential features such as full-length storm flaps for extra protection from the wind, a drop tail back and Lycra storm cuffs.

The Tawstock meets EN343 class 3, meaning it offers a high level of protection from the rain.

EN 343 is the standard that measures how well a garment protects you from the rain.

The LTEC 3K+ fabric used on the Tawstock meets more than double the requirement to meet class 3.



'Tawstock' Anorak A01-Y

TAWSTOCK

ISO 20471 CLASS 3 ANORAK

FABRIC
300D PU COATED
POLYESTER EN 343 3,1

FASTENER
ZIP

TRIM
GREY

LENGTH
92-98CM

SIZES
S-6XL

FEATURES:

- Warm Quilt Lining
- Lycra Storm Cuff
- Hood In Collar
- Drop Tail Back
- Two Way Main Zip
- Internal Wallet Pocket
- Full Length Velcro-Fastened Storm Flap
- Velcro-Fastened Front Pockets

LTEC 3K+



TAWSTOCK
COLOUR Yellow
ITEM CODE A01-Y

TAWSTOCK
COLOUR Orange (RIS-3279-TOM)
ITEM CODE A01-O

TAWSTOCK
COLOUR Yellow/Navy
ITEM CODE A01-Y/NV

TAWSTOCK
COLOUR Orange/Navy
ITEM CODE A01-O/NV



TAWSTOCK
COLOUR Yellow/Bottle Green
ITEM CODE A01-Y/BT



TAWSTOCK
COLOUR Hi-Viz Red/Grey
ITEM CODE A01-R/GY



TAWSTOCK
COLOUR Yellow/Black
ITEM CODE A01-Y/BK

MARWOOD

SUPERIOR ANORAKS

The Marwood has all the attributes of our Tawstock model plus improved styling and a host of additional features. The double storm flap, lined three-piece hood and mini cuff-adjuster combine to offer superior protection against the wind and rain. The ID pocket and concealed secure Nelson pocket make this a truly practical and functional garment to be seen in.



CHIN PROTECTOR

ID POCKET WITH WINDOW SIDE OPENING

MOBILE PHONE POCKET

RETROMAX REFLECTIVE TAPE

VELCRO-FASTENED MINI CUFF-ADJUSTER

VELCRO-FASTENED DOUBLE STORM FLAP

CONCEALED LINED HOOD

TWO WAY CHUNKY MAIN ZIP

ZIP-FASTENED NELSON POCKET BEHIND STORM FLAP

WARM QUILT LINED BODY & SLEEVES

SEMI HIDDEN LARGE VELCRO-FASTENED PATCH POCKETS

LYCRA STORM CUFF

V-SHAPED DROP TAIL BACK

MARWOOD

COLOUR Yellow/Navy
ITEM CODE A03-Y/NV

MARWOOD

COLOUR Yellow
ITEM CODE A03-Y

ISO 20471 CLASS 3
SUPERIOR ANORAK

FABRIC
PU COATED POLYESTER,
EN343 3,1

LENGTH 92-98cm | SIZES S-6XL

LTEC 3K+

TORRIDGE

LIGHTWEIGHT BREATHABLE ANORAKS

The Torrridge lightweight anorak is perfect for keeping the wearer dry and comfortable in warmer weather conditions. The 150d fabric is lightweight without compromising on performance, meeting class 3 for both water penetration and breathability specified in EN343. The garment has been improved to include a YKK interactive zip that can incorporate a Leo Fleece, Softshell Jacket or Bodywarmer.



FIXED CONCEALED HOOD ON YELLOW MODEL

VELCRO-FASTENED STORM FLAP

TWO-WAY CHUNKY MAIN ZIP

MESH LINED BODY & SLEEVES

MOBILE PHONE POCKET WITH D-RING

INTERNAL INTERACTIVE YKK ZIP

LYCRA STORM CUFFS

DETACHABLE HOOD ON ORANGE MODEL

RETROMAX REFLECTIVE TAPE

INTERNAL ZIPPED POCKET

VELCRO-FASTENED FRONT POCKETS

VELCRO-FASTENED MINI-CUFF ADJUSTER

SHAPED DROP-TAIL BACK

TORRIDGE

COLOUR Orange (RIS-3279-TOM)
ITEM CODE A06-O

TORRIDGE

COLOUR Yellow
ITEM CODE A06-Y

ISO 20471 CLASS 3
BREATHABLE
LIGHTWEIGHT ANORAK

FABRIC
BREATHABLE 150D PU
COATED POLYESTER, EN343 3,3

LENGTH 92-98cm | SIZES S-6XL



INTERACTIVE ZIPPER

Garment Codes F01, BW01 & SJ01 can be zipped into this garment for extra warmth. See pages 104-105 for more details.

CLOVELLY

BREATHABLE EXECUTIVE ANORAKS

THE INCREDIBLY POPULAR CLOVELLY OFFERS EXCEPTIONAL PERFORMANCE IN ALL WEATHER CONDITIONS.

Crafted from LTEC 10K, a high performance 2-layer laminated fabric which is windproof, breathable and offers great protection from the rain.

The garment has a mesh lining for breathability but can also incorporate a Leo fleece, softshell jacket or bodywarmer via the interactive YKK zipper, for when you need that extra warmth.



'Clovelly' Breathable Executive Anorak A04-O

ANORAKS



CLOVELLY
COLOUR Yellow
ITEM CODE A04-Y

CLOVELLY
COLOUR Orange (RIS-3279-TOM)
ITEM CODE A04-O

CLOVELLY
COLOUR Yellow/Navy
ITEM CODE A04-Y/NV

CLOVELLY

ISO 20471 CLASS 3
BREATHABLE EXECUTIVE ANORAK

FABRIC
LTEC 10K 2-LAYER 300D
LAMINATED POLYESTER EN 343 3,3

LENGTH 95-98cm | **SIZES** S-6XL

INTERACTIVE ZIPPER
Garment Codes F01, BW01 & SJ01 can be zipped into this garment for extra warmth. See pages 104-105 for more details.

LTEC10K

FEATURES:

- Mesh Lined Body & Sleeves
- Lycra Storm Cuff, Velcro-Fastened Mini Cuff-Adjusters
- 3 piece fixed concealed hood (detachable on Orange model)
- Shaped Drop Tail Back
- Two Way Main Zip
- Full Length Velcro-Fastened Storm Flap
- Internal Zipped Patch Pocket
- Velcro-Fastened Front Pockets
- Quadruple Stitched Reflective Tape for Improved Durability

INTERACTIVE GARMENTS

Our Clovelly, Torridge and Dartmoor Breathable Jackets are fantastic stand-alone garments. However, if you need that extra bit of warmth, the Leo Fleece Jacket, Softshell Jacket or Bodywarmer can be incorporated into the Jacket via the interactive YKK zip.

All our interactive garments also conform to ISO 20471, meaning the wearer remains visible and compliant even when a layer of clothing is removed.

INTERACTIVE ZIPPER
Garment Codes F01, BW01 & SJ01 can be zipped into this garment for extra warmth.



CLOVELLY
ITEM CODE A04-Y
PAGE 102

TORRIDGE
ITEM CODE A06-Y
PAGE 101

DARTMOOR
ITEM CODE J05-Y
PAGE 110



CLOVELLY
ITEM CODE A04-O
PAGE 102

TORRIDGE
ITEM CODE A06-O
PAGE 101

DARTMOOR
ITEM CODE J05-O
PAGE 110



TORRINGTON
ITEM CODE BW01-Y
PAGE 92



HARTLAND
ITEM CODE F01-Y
PAGE 88



BUCKLAND
ITEM CODE SJ01-Y
PAGE 90



TORRINGTON
ITEM CODE BW01-O
PAGE 92



HARTLAND
ITEM CODE F01-O
PAGE 88



BUCKLAND
ITEM CODE SJ01-O
PAGE 90

MARISCO

HIGH PERFORMANCE WATERPROOF ANORAK

INTRODUCING THE MARISCO, THE ULTIMATE JACKET FOR KEEPING YOU DRY, COMFORTABLE, SAFE AND SEEN WITHOUT COMPROMISING ON DESIGN.

Our highest specification anorak really pushes the boundaries of performance; the LTEC 20K 3-layer performance fabric is extremely waterproof, highly breathable and windproof whilst the modern, intelligent fit works with your body for optimum mobility. Fabric and fit combine to offer a fantastic anorak that ensures you stay protected in the harshest weather conditions.



For the matching overtrouser, see the Lundy on page 120.

'Marisco' Waterproof Anorak A20-O



MARISCO
COLOUR Yellow
ITEM CODE A20-Y



MARISCO
COLOUR Orange
(RIS-3279-TOM)
ITEM CODE A20-O



MARISCO

ISO 20471 CLASS 3
HIGH PERFORMANCE
WATERPROOF ANORAK

FABRIC
LTEC 20K PERFORMANCE
3-LAYER FABRIC, 175GSM,
TO EN343 4:4

LENGTH 85-105cm | **SIZES** S-6XL



FEATURES:

- Intelligent Close Fit - Works with your body for Optimum Mobility
- 2-Way Adjustable Snorkel Hood with Reinforced Hood Visor (*detachable on orange version*)
- Meets the requirements of the rain tower test specified in EN 14360 for impact from above with high energy droplets
- Hood Stays in Place Via Security Snap
- YKK Waterproof Main Zip with Full-Length Mini Storm Flap
- Chest pocket with Waterproof Zip
- Toggle Hem Adjuster
- Folded Gusset Cuff Adjuster with Velcro Fastening
- Articulated Sleeves
- Large Hand Pockets with Stud Fastened Flaps
- Ribbed Inner Neck for Comfort
- Internal Zip Pocket
- Heat Applied Segmented Reflective Tape

LAYER WITH LEO

DRESS CLEVER AND STAY PROTECTED WHATEVER THE WEATHER.



WHAT LEO

By layering your Leo products, you can ensure you are always working at the optimum temperature, whilst conforming to ISO 20471 at all times. Several layers of clothing on top of each other can offer much better performance than one thicker garment as it manages heat and moisture more effectively. Each layer is optional, you may wear the base layer with the weather protection layer when it's warm and wet or just the base and warmth layers on a chilly morning.



WATERMOUTH
ITEM CODE T13-O
PAGE 75

BASE LAYER

Choose a high-performance layer against the skin, such as the Watermouth Sleeved Performance T-shirt, that will channel moisture and heat away from the body.



WINKLEIGH
ITEM CODE SS05-O
PAGE 79

WARMTH LAYER

Choose a layer that offers warmth, insulation and freedom of movement, such as the Winkleigh Sweatshirt with its diamond quilt poly/cotton fabric and elasticated reflective tape.



MARISCO
ITEM CODE A20-O
PAGE 106

WEATHER PROTECTION LAYER

Choose a highly breathable, highly waterproof and windproof outer shell, such as the Marisco Anorak for protection and comfort in rain, snow and wind.

DARTMOOR

ECOVIZ 10K BREATHABLE BOMBER JACKET

INTRODUCING THE DARTMOOR, THE MUCH-ANTICIPATED BREATHABLE BOMBER JACKET FROM LEO WORKWEAR.

Crafted from EcoViz 10K, a waterproof, windproof and breathable fabric made from 89% recycled polyester; the Dartmoor offers excellent protection in all weather conditions without costing the Earth. The garment offers a fantastic combination of great fit, sustainable performance fabric and a whole host of features to ensure great wearer satisfaction.

FEATURES:

- Mesh Lined Body & Sleeves
- Lycra Storm Cuff with Stay-Put Thumbhole & Velcro-Fastened Cuff-Adjusters
- High Collar with Chin Protector
- 3 Piece Concealed Hood (Stud-Detachable on Orange Model)
- Part-Elasticated Hem with Curved Drop Back
- Chunky YKK Main Zip
- Full Length Velcro-Fastened Double Storm Flap
- Segmented Reflective Tape
- Internal Safety Glasses/Goggles Pocket with Removable Micro-Fibre Cloth
- Internal Tablet Pocket, can take a tablet up to 10.5" (not including a case)
- Velcro Fastened Front Pockets
- Hand Warmer Pockets
- ID Pocket with Window, Side Opening



'Dartmoor' Breathable Bomber Jacket J05-O

DARTMOOR

ISO 20471 CLASS 3 ECOVIZ 10K BREATHABLE BOMBER JACKET

FABRIC
ECOVIZ 10K 2-LAYER LAMINATED RECYCLED POLYESTER, PU MEMBRANE

LENGTH 81-89CM | **SIZES** S-6XL



INTERACTIVE ZIPPER

Garment Codes F01, BW01 & SJ01 can be zipped into this garment for extra warmth. See pages 104-105 for more details.



ecoviz 10K



DARTMOOR
COLOUR Yellow
ITEM CODE J05-Y

DARTMOOR
COLOUR Orange
(RIS-3279-TOM)
ITEM CODE J05-O



INTERNAL TABLET POCKET



INTERNAL SAFETY GLASSES/GOGGLES POCKET



STAY-PUT THUMBHOLES

EXMOOR

BREATHABLE JACKET

THE EXMOOR JACKET,
WHERE PERFORMANCE
MEETS MODERN DESIGN.

The garment takes inspiration from the outdoor extreme sports market where functionality, durability and freedom of movement are paramount. We've fused these attributes with outstanding high visibility performance to create an exceptional garment for the modern workforce.



'Exmoor' Breathable Jacket J04-Y

EXMOOR

ISO 20471 CLASS 3
BREATHABLE JACKET

FABRIC
LTEC 10K 2-LAYER 300D
LAMINATED POLYESTER, EN 343 3,3

TRIM GREY | **LENGTH** 78-102_{CM} | **SIZES** S-6XL

LTEC 10K

EXMOOR
COLOUR Yellow
ITEM CODE J04-Y



ZIP-DETACHABLE
TWO-WAY ADJUSTABLE
HOOD WITH STIFF VISOR

RELAXED FIT

MICRO-FLEECE
LINED COLLAR

UNDER-ARM ZIPPED
OPENING WITH
MESH VENTILATION

MESH
LINED BODY

ARTICULATED
SLEEVES

FULL LENGTH VELCRO-
FASTENED STORM FLAP

ZIPPED FRONT HAND
WARMER POCKETS

INTERNAL
NELSON POCKET

VELCRO FASTENED
CUFF ADJUSTER

2 X INTERNAL
DROP POCKETS

SHOCK CORD
HEM ADJUSTER

YKK MAIN ZIP

ELASTICATED
WIND SKIRT



CHIVENOR

BOMBER JACKET

The Chivenor Bomber Jacket is warm, rugged, durable and perfect for a wide variety of working conditions. It's packed with essential features such as semi-concealed front pockets, perfect for storage or warming the hands and the useful stow-away hood for those unexpected showers. Made from LTEC 3K+, the garment meets class 3 for waterproofness as specified in EN 343. A great jacket for keeping you safe, seen and protected in foul weather conditions.



CHIVENOR
COLOUR Yellow
ITEM CODE J01-Y

CHIVENOR
COLOUR Orange (RIS-3279-TOM)
ITEM CODE J01-O

ISO 20471 CLASS 3
BOMBER JACKET

FABRIC
300D PU COATED POLYESTER,
EN 343 3,1

LENGTH 72-81cm | **SIZES** S-6XL

LTEC 3K+

FEATURES:

- Warm Quilt Lining • Lycra Storm Cuff
- Hood in Collar • Internal Wallet Pocket
- Full Length Velcro-Fastened Storm Flap
- Large Zip-Fastened Front Pockets
- Mobile Phone Pocket • Chunky Main Zip
- Part Elasticated Hem

BICKINGTON

SUPERIOR BOMBER JACKET

The Bickington Superior Bomber Jacket has all the attributes of our Chivenor, this time with a snug fleece-lined body and a host of additional features. The double storm flap, lined three-piece hood and mini cuff-adjuster combine to offer superior protection against wind and rain. The ID pocket and concealed Nelson pocket make this jacket practical and functional in equal measure.



BICKINGTON
COLOUR Yellow
ITEM CODE J02-Y

BICKINGTON
COLOUR Orange (RIS-3279-TOM)
ITEM CODE J02-O

ISO 20471 CLASS 3
SUPERIOR BOMBER JACKET

FABRIC
300D PU COATED POLYESTER,
EN 343 3,1

LENGTH 72-81cm | **SIZES** S-6XL

LTEC 3K+

FEATURES:

- Chin Protector • Lycra Storm Cuffs
- Warm Fleece-lined Body & Quilted Sleeve Lining
- Integral Hood • Velcro Cuff-Adjuster
- Chunky Main Zip • Internal Zip Fastened Pocket
- Full Length Velcro-Fastened Double Storm Flap
- Large Zip-Fastened Front Pockets • ID Pocket

TROUSERS

COVERALLS & BIB & BRACE

IMPORTANT STANDARDS IN THIS SECTION



ISO 20471
Specifies the requirements for high visibility clothing.



RIS-3279-TOM
Specifies the requirements for high visibility clothing in the Rail industry.



EN 343
Specifies the requirements for protection against rain, measuring waterproofness and water vapour resistance.

NEW GARMENT HIGHLIGHTS



APPLEDORE
Page 118

LUNDY
Page 120

NORTHAM
Page 124



HAWKRIDGE
Page 127

BIDEFORD
Page 128

BRANDS IN THIS SECTION



Retromax®
Leo Workwear's brand of quality reflective tape.



Retromax®+
Leo Workwear's brand of premium performance reflective tape.



LTEC® 3K+
PU polyester offering good protection from the rain.



LTEC® 10K
2-layer laminated polyester offering great protection from the rain.



Ecoviz 10K
A recycled polyester conforming to ISO 20471 offering great protection from the rain.



Ecoviz 10KX
A recycled polyester with stretch offering great protection from the rain.



LTEC® 20K
3-layer waterproof, windproof and breathable high-performance fabric.



APPLEDORE

CARGO OVERTROUSERS

When the weather demands more protection than an upper garment alone, the Appledore Overtrouser is a perfect solution. The garment is easy to put on and take off thanks to the zipped leg access and comfortable to wear with an elasticated waist and a relaxed fit. Crafted from LTEC 3K+ PU coated polyester, this garment meets class 3 for protection from the rain specified under EN 343.

FABRIC
300D PU COATED
POLYESTER, EN343 3,1

SIZES
S-6XL

LTEC 3K+

ELASTICATED WAIST WITH
SHOCK CORD ADJUSTER

SIDE POCKET
ACCESS

PU COATED
POLYESTER
TO EN343 3,1

LARGE VELCRO-
FASTENED CARGO
POCKETS

RETROMAX
REFLECTIVE TAPE

LOWER LEG ZIP
OPENING WITH
VELCRO-FASTENED
STORM FLAP



APPLEDORE
COLOUR Yellow
ITEM CODE L01-Y
ISO 20471 Class 1

APPLEDORE NEW!
COLOUR Orange (RIS-3279-TOM)
ITEM CODE L01-O
ISO 20471 Class 1

APPLEDORE
COLOUR Navy
ITEM CODE L01-NV
ISO 20471 Non-compliant

New! The Appledore is now available in Orange, meeting RIS-3279-TOM for use on the rail.

INSTOW

EXECUTIVE CARGO OVERTROUSERS

The Instow Executive Overtrouser has all the attributes of our Appledore model but this time crafted from our high performance LTEC 10K fabric which provides a windproof, waterproof and breathable personal barrier system. This garment accompanies the Clovelly Executive Anorak perfectly (see page 102) to create full body protection from the elements.

FABRIC
LTEC 10K 2-LAYER 300D
LAMINATED POLYESTER, EN343 3,3

SIZES
S-6XL

LTEC 10K

FEATURES:

- Elasticated Waist with Shock Cord Adjuster
- Large Velcro-Fastened Cargo Pockets
- Lower Leg Zip Opening with Velcro-Fastened Storm Flap
- Side Pocket Access



INSTOW
COLOUR Yellow
ITEM CODE L02-Y
ISO 20471 Class 1

INSTOW
COLOUR Orange (RIS-3279-TOM)
ITEM CODE L02-O
ISO 20471 Class 1

PERFORMANCE
WATERPROOF
OVERTROUSERS

LUNDY

**INTRODUCING THE LUNDY,
THE ULTIMATE OVERTROUSER
FOR KEEPING YOU DRY,
SAFE AND SEEN WITHOUT
COMPROMISING ON DESIGN.**

Our highest specification overtrouser really pushes the boundaries of performance; the LTEC 20K 3-layer performance fabric is extremely waterproof, highly breathable and windproof. We've incorporated a long list of quality branded components, such as YKK waterproof zips, Cordura ankle panels and a Teflon DWR finish to create a garment that ensures you stay protected in the harshest weather conditions.



'Lundy' Waterproof Overtrouser L20-O

LUNDY

ISO 20471 CLASS 2 HIGH PERFORMANCE
WATERPROOF OVERTROUSER

FABRIC
LTEC 20K PERFORMANCE
3-LAYER FABRIC, 175GSM,
TO EN343 4:4

SIZES
S-6XL



*For the matching anorak,
see the Marisco (page 106)*



LUNDY
COLOUR Yellow
ITEM CODE L20-Y

LUNDY
COLOUR Orange (RIS-3279-TOM)
ITEM CODE L20-O

LUNDY

WATERTOWN

ISO 20471 CLASS 3 ECOVIZ 10KX
STRETCH COVERALL

FULL BODY PROTECTION FROM THE ELEMENTS
WITH INCREDIBLE STRETCH PROPERTIES.

Introducing the Watertown Stretch Coverall, crafted from a waterproof, windproof and breathable two-layer laminated polyester that offers exceptional and consistent protection from the elements. The Ecoviz 10KX fabric is comprised of a recycled polyester, with each garment made up of over 100 recycled plastic bottles. Designed to ensure excellent freedom of movement, with mechanical stretch in the fabric, stretch Cordura Knee panels and elasticated Retromax+ reflective tape.



'Watertown' EcoViz 10KX Stretch Coverall CV02-O

WATERTOWN

ISO 20471 CLASS 3 ECOVIZ 10KX
STRETCH COVERALL

FABRIC
ECOVIZ 10KX 2-LAYER LAMINATED
RECYCLED STRETCH POLYESTER, EN343 3,3

SIZES
S-6XL **ecoviz**



NORTHAM

ISO 20471 CLASS 2
ECOVIZ 10K BIB & BRACE

FANTASTIC PROTECTION FROM THE WIND AND RAIN IN A FABRIC THAT IS KIND TO THE PLANET.

New to the range, the Northam Bib and Brace is a great alternative to an overtrouser, when you require that extra bit of body coverage. Leo continue to lead the way in creating sustainable products; the Northam is made up of 89% recycled polyester which, combined with the PU membrane provide a waterproof, windproof and breathable barrier to the elements.

FEATURES:

- Adjustable Elasticated Shoulder Straps and Soft Rubber Buckles
- Large Bib Pocket with Velcro-Fastened Flap and Reflective Piping
- Raised Back for Additional Coverage
- Elasticated Back for a Closer Fit
- Side Zip from Under-Arm to Waist for Ease of Putting On and Taking Off
- Segmented Reflective Tape
- Large Velcro-Fastened Cargo Pockets with Reflective Piping
- Lower Leg Zip Opening with Velcro-Fastened Storm Flap

FABRIC
ECOVIZ 10K
2-LAYER LAMINATED
POLYESTER, EN343 3,3.
89% RECYCLED
POLYESTER,
11% PU MEMBRANE

SIZES
S-6XL



NORTHAM
COLOUR Yellow
ITEM CODE BB01-Y

NORTHAM
COLOUR Orange
(RIS-3279-TOM)
ITEM CODE BB01-O



LANDCROSS

ISO 20471 CLASS 1
STRETCH WORK TROUSER

FREEDOM OF MOVEMENT, DURABILITY AND WATER REPELLENCE COMBINE TO CREATE THE LANDCROSS, A FANTASTIC VERSATILE HIGH VISIBILITY TROUSER FOR THE MODERN WORKFORCE.

They are great to move around in; a stretch softshell fabric, articulated knees and stretchy segmented reflective tape ensures the garment moves with you. The outer fabric is a durable ripstop softshell which is water repellent, very useful if you get caught in an unexpected shower, whilst the inner fabric is a soft brushed tricot providing excellent comfort against the skin.

FABRIC
RIP STOP SOFTSHELL WITH WATER REPELLENT
FINISH, 91% POLYESTER, 9% SPANDEX

SIZES
S-6XL

YKK FLY & FRONT
BUTTON CLOSURE

REINFORCED
CROTCH GUSSET

RELAXED
FREE FIT

ARTICULATED
KNEES



ELASTICATED
WAISTBAND WITH
ADJUSTABLE BELT

ZIP-FASTENED
FRONT POCKETS

REAR PATCH
POCKET

ANGLED
CHEVRON
REFLECTIVE
TAPE DESIGN

LANDCROSS
COLOUR Yellow
ITEM CODE WT01-Y

LANDCROSS
COLOUR Orange (RIS-3279-TOM)
ITEM CODE WT01-O



EACH ECOVIZ 4X
JOG TROUSER
INCORPORATES
16 RECYCLED
PLASTIC BOTTLES

16 RECYCLED PLASTIC BOTTLES



STEP 1

Recycled plastic bottles are chopped into pieces



STEP 2

Pieces are processed into raw polyester material



STEP 3

Polymerisation produces new polyester fibres



STEP 4

We take these fibres to create EcoViz® 4X - a polyester fabric that fully conforms to ISO 20471



HAWKRIDGE

ISO 20471 CLASS 1
ECOVIZ 4X JOG TROUSER

THE HAWKRIDGE, THE JOG TROUSER REIMAGINED.

This is not your average jog trouser. Everything on this garment stretches; the fabric, the reflective tape, the hems, even the reinforced Cordura knee panels. All that stretch ensures you can do your job without any restriction. Add in the extremely soft fabric against the skin and a next-to-body fit and you've got the most comfortable trouser that we've ever made!

FABRIC
ECOVIZ 4X: A BLEND OF RECYCLED 4-WAY STRETCH POLYESTER & SPANDEX

SIZES
S-6XL



HAWKRIDGE
COLOUR Yellow
ITEM CODE JT01-Y

HAWKRIDGE
COLOUR Orange (RIS-3279-TOM)
ITEM CODE JT01-O

BIDEFORD

CARGO TROUSERS

PROBABLY THE MOST COMFORTABLE, DURABLE AND FUNCTIONAL CARGO TROUSER ON THE MARKET.

The extremely popular Bideford Cargo Trousers were created with product longevity in mind, with triple stitched main seams, quadruple stitched reflective tape and a YKK fly zipper.

The pockets are generous, reinforced and secured by a Velcro-fastened flap making them a sturdy storage solution.

Available in a vast number of sizes and in six colour combinations, there's a Bideford Cargo Trousers to suit any customer's requirements.

The Bideford in Orange is perfect for those working on or near the railway.



'Bideford' Cargo Trousers CT01-O

BIDEFORD

ISO 20471 CLASS 1 CARGO TROUSERS

FABRIC
POLY/COTTON WITH
WATER AND STAIN
REPELLENT FINISH, 280GSM

SIZES*
SINGLE-COLOUR ORANGE OR YELLOW
Short Leg - Waist sizes 28" - 50"
Regular Leg - Waist Sizes 28" - 60"
Tall Leg - Waist Sizes 28" - 54"

LEG LENGTHS
Short - 29"
Regular - 31"
Tall - 33"

* See Size Guide (page 162) for more details.



7 BELT LOOPS

METAL BUTTON
FASTENER AND
YKK ZIP FLY

INTERNAL
KNEE PAD
POCKETS

QUADRUPLE
STITCHED
REFLECTIVE TAPE

SIDE WAIST
ELASTICATION

BACK POCKET
WITH REFLECTIVE
PIPING

CARGO STYLE LEG
POCKETS WITH
REFLECTIVE
PIPING

TRIPLE
STITCHED
MAIN SEAMS

BIDEFORD
COLOUR Yellow
ITEM CODE CT01-Y

BIDEFORD
COLOUR Orange (RIS-3279-TOM)
ITEM CODE CT01-O

BIDEFORD

ISO 20471 CLASS 1
DUAL-TONE CARGO TROUSERS



*New! Now available
in striking dual colour
fluorescent red/grey.*

BIDEFORD **NEW!**
COLOUR Hi-Vis Red/Grey
ITEM CODE CT01-R/GY

BIDEFORD
COLOUR Yellow/Grey
ITEM CODE CT01-Y/GY

FABRIC
POLY/COTTON WITH WATER AND
STAIN REPELLENT FINISH, 280GSM

SIZES*
Short Leg - Waist sizes 28" - 46"
Regular Leg - Waist Sizes 28" - 60"
Tall Leg - Waist Sizes 28" - 54"

LEG LENGTHS
Short - 29"
Regular - 31"
Tall - 33"

* See Size Guide (page 162) for more details.



BIDEFORD
COLOUR Yellow/Navy
ITEM CODE CT01-Y/NV

BIDEFORD
COLOUR Orange/Navy
ITEM CODE CT01-O/NV

ILFRACOMBE

CARGO TROUSERS

Following the success of the Bideford High Visibility Cargo Trousers comes the same trouser in two non-conforming colours, black or navy. The darker colours provide practicality in dirty or dusty environments, whilst the reflective tape pattern ensures a level of enhanced visibility for the wearer. All the features found in the Bideford have been included here to deliver garment comfort, durability and functionality.

POLY/COTTON CARGO TROUSER
(NON ISO 20471)

FABRIC
POLY/COTTON WITH WATER AND
STAIN REPELLENT FINISH, 240GSM

SIZES*
Short Leg - Waist sizes 28" - 50"
Regular Leg - Waist Sizes 28" - 60"
Tall Leg - Waist Sizes 28" - 54"

LEG LENGTHS
Short - 29"
Regular - 31"
Tall - 33"

* See Size Guide (page 162)
for more details.

FEATURES:

- Metal Button Fastener and YKK Zip Fly
- Triple Stitched Main Seams
- Quadruple Stitched Reflective Tape
- Cargo Style Leg Pockets with Reflective Piping
- Internal Knee Pad Pockets
- Back Pocket with Reflective Piping
- Side Waist Elastication
- 7 Belt Loops



ILFRACOMBE
COLOUR Navy
ITEM CODE CT02-NV

ILFRACOMBE
COLOUR Black
ITEM CODE CT02-BK

ILFRACOMBE

YELLAND

LIGHTWEIGHT CARGO TROUSERS

A must for people working in warmer working conditions who require the protection of a high visibility trouser. The Yelland is crafted from a 210gsm poly/cotton fabric, making it over a third lighter than our Bideford Cargo Trouser, from which it borrows some key features for durability and functionality. The lightweight fabric and breathable perforated reflective tape combine with a modern fit to create a fantastic new trouser, perfect for keeping you safe, seen and cool when the temperature rises.

ISO 20471 CLASS 1 LIGHTWEIGHT POLY/COTTON CARGO TROUSER

FABRIC
POLY/COTTON WITH WATER AND STAIN REPELLENT FINISH, 210GSM

SIZES*
Short Leg - Waist sizes 28" - 48"
Regular Leg - Waist Sizes 28" - 48"
Tall Leg - Waist Sizes 28" - 48"

LEG LENGTHS
Short - 29"
Regular - 31"
Tall - 33"

* See Size Guide (page 162) for more details.

FEATURES:

- Metal Button Fastener and YKK Zip Fly
- Triple Stitched Main Seams
- Heat-applied Perforated Chevron-Pattern Reflective Tape
- Cargo Style Leg Pockets
- 2 x Waist Pockets & 1 x Back Pocket
- Side Waist Elastication
- 7 Belt Loops

INTRODUCING PERFORATED REFLECTIVE TAPE.

Unique to Leo Workwear, the chevron pattern is made up of small holes in the tape, which not only looks great but allows for increased airflow and enhanced breathability when compared to standard tapes.



YELLAND
COLOUR Yellow
ITEM CODE CT03-Y

YELLAND
COLOUR Orange (RIS-3279-TOM)
ITEM CODE CT03-O

The Yelland in Orange is perfect lightweight choice for those working on or near the railway.

MOLLAND

ISO 20471 CLASS 3 POLY/COTTON COVERALL

Back by popular demand, the Molland is a fantastic poly/cotton coverall designed with product longevity, durability and functionality in mind. It has many features that set it apart, such as the triple stitching on all the main seams, quadruple stitching on the Retromax+ Reflective tape and reinforced bellowed cargo pockets. Little extra details such as reflective piping on pockets and stud-fastened access to your trousers pockets make the Molland a truly functional and practical offering, perfect for wearing on the roads or near the trackside.

FABRIC
POLY/COTTON WITH WATER AND STAIN REPELLENT FINISH, 280GSM

SIZES
S-6XL

RETROMAX+
PREMIUM REFLECTIVE TECH

FEATURES:

- Two-way YKK Main Zip
- Velcro-Fastened Storm Flap
- Triple Stitched Main Seams
- Adjustable Waist Elastication
- Quadruple Stitched Reflective Tape
- 2 x Waist Pockets
- 2 x Velcro-Fastened Chest Pockets
- 2 x Radio Loops
- Internal Knee Pad Pockets
- Stud-Fastened Access to Trouser Pockets
- Cargo Style Bellowed Leg Pockets with Reflective Piping
- Back Pocket with Reflective Piping
- Stud-Fastened Adjustable Cuffs
- Stand Up Collar



MOLLAND
COLOUR Orange (RIS-3279-TOM)
ITEM CODE CV01-O

MOLLAND
COLOUR Yellow
ITEM CODE CV01-Y

TRAFFIC MANAGEMENT

IMPORTANT STANDARDS IN THIS SECTION



ISO 20471

Specifies the requirements for high visibility clothing.



EN 13758-2

Specifies the requirements for protection against solar ultraviolet radiation.



EN 343

Specifies the requirements for protection against rain, measuring waterproofness and water vapour resistance.

BRANDS IN THIS SECTION



Oralite®

A leading brand in reflective materials manufactured by Orafol®.



Coolviz®

A garment specifically designed for working in warmer environments.



EcoViz® rp

100% recycled polyester conforming to ISO 20471 for high visibility.

FOCUS ON FEATURES



These garments feature Oralite (formerly Reflexite) prismatic reflective tape technology which is extremely abrasion resistant. The tape also offers superior reflective performance in wet weather conditions when compared with standard reflective tapes.



TRAFFIC MANAGEMENT GARMENTS

Our Traffic Management range of garments offer extra day time conspicuity with their bright orange Oralite reflective braces.

ORALITE

These garments feature Oralite (formerly Reflexite) prismatic reflective tape technology which is extremely abrasion resistant. The tape also offers superior reflective performance in wet weather conditions when compared with standard reflective tapes.

BARBROOK

ISO 20471 CLASS 3 ORANGE BRACE SLEEVED WAISTCOAT

FABRIC 100% KNITTED POLYESTER | TRIM GREY | FASTENER ZIP
SIZES S-6XL | LENGTH 77-82cm

FEATURES:

- Mesh Fabric Shoulders • Mobile Phone Pocket
- Ventilated Side and Under Arm Seams
- ID Pocket and Mic. Loop

LEO
COOLVIZ®

BARBROOK
COLOUR Yellow
ITEM CODE S13-Y
ORALITE



TADDIPOINT

ISO 20471 CLASS 3 ORANGE BRACE 3/4 SLEEVE WAISTCOAT

FABRIC 100% KNITTED POLYESTER | TRIM GREY | FASTENER ZIP
SIZES S-6XL | LENGTH 77-82cm

FEATURES:

- Mesh Fabric Shoulders • Mobile Phone Pocket
- Ventilated Side and Under Arm Seams
- ID Pocket and Mic. Loop

LEO
COOLVIZ®

TADDIPOINT
COLOUR Yellow
ITEM CODE S14-Y
ORALITE



BICKLETON

ISO 20471 CLASS 3 ORANGE BRACE COOLVIZ SLEEVED POLO SHIRT

FABRIC 100% COOLVIZ POLYESTER, 185GSM | TRIM GREY
SIZES S-6XL | LENGTH 73-89cm

FEATURES:

- Generous Fit • Split-Hem Design
- Strategically Positioned Reflective Tape for Optimal Wearer Movement
- UV protection to UPF 40+ meeting EN 13758-2

ecoviz
LEO
COOLVIZ®

BICKLETON
COLOUR Yellow
ITEM CODE P07-Y
ORALITE



PUTFORD

ISO 20471 CLASS 3 ORANGE BRACE ANORAK

FABRIC 300D PU COATED POLYESTER, EN343 3,1 | SIZES S-6XL | LENGTH 92-98cm

FEATURES:

- Warm Quilt Lining • Lycra Storm Cuff
- Hood In Collar • Shaped Drop Back
- Two-Way Main Zip • Internal Wallet Pocket
- Full Length Velcro-Fastened Storm Flap
- Velcro-Fastened Front Pockets

PUTFORD
COLOUR Yellow
ITEM CODE A02-Y
ORALITE



PORTMORE

ISO 20471 CLASS 3 ORANGE BRACE SUPERIOR BOMBER JACKET

FABRIC 300D PU COATED POLYESTER, EN343 3,1 | SIZES S-6XL | LENGTH 73-81cm

FEATURES:

- Warm Quilt Lining • Lycra Storm Cuff • Hood in Collar
- Chunky Main Zip • Large Zip-Fastened Front Pockets
- Part Elasticated Hem • Velcro-Fastened Cuff Adjuster
- Mic. Loop • Mobile Phone Pocket • ID Pocket
- Full Length Velcro-Fastened Double Storm Flap
- Chin Protector • Internal Zip Fastened Pocket

PORTMORE
COLOUR Yellow
ITEM CODE J03-Y
ORALITE



WOMENS & MATERNITY GARMENTS

IMPORTANT STANDARDS IN THIS SECTION



ISO 20471
Specifies the requirements for high visibility clothing.



EN 13758-2
Specifies the requirements for protection against solar ultraviolet radiation.



RIS-3279-TOM
Specifies the requirements for high visibility clothing in the Rail industry.



EN 343
Specifies the requirements for protection against rain, measuring waterproofness and water vapour resistance.

NEW GARMENT HIGHLIGHTS



LILLY
Page 146



HOLLICOMBE
Page 149



STARCROSS
Page 155

BRANDS IN THIS SECTION



Retromax®
Leo Workwear's brand of quality reflective tape.



Coolviz® Ultra
A super-soft, hydrophobic and anti-microbial polyester.



LTEC® 10K
2-layer laminated polyester offering great protection from the rain.



FABRIC BRAND GUIDE: WOMENS RANGE



Offering exceptional performance in the hottest conditions, Coolviz Ultra is excellent at managing moisture, channelling sweat to the outer, where it can be evaporated quickly. It's really soft to touch and very comfortable against the skin.

WHY CHOOSE COOLVIZ ULTRA PRODUCTS?

- Exceptional performance in the hottest conditions
- Soft handle fabric prevents irritation
- Intelligent hydrophobic fabric manages moisture
- Anti-microbial finish to manage odour and bacterial build-up
- Segmented reflective tape for garment stretch and breathability
- Sun protection to UPF 40+
- Certified to 50 wash cycles, twice the industry standard

QUICK PRODUCT GUIDE:



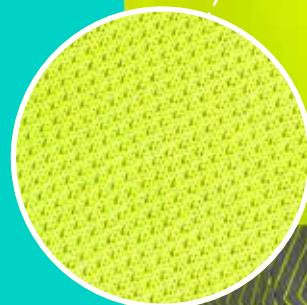
PIPPACOTT
Page 145

POLLYFIELD
Page 145



LILLY
Page 146

LOVACOTT
Page 158



LTEC 10K is a 2-layer fabric which is waterproof, windproof and breathable. Garments made from LTEC 10K are extremely popular due to their high levels of performance at an affordable price. There are some great garment designs within the range, including the Rosemoor; an excellent jacket crafted specifically to fit the female wearer.

WHY CHOOSE LTEC 10K PRODUCTS?

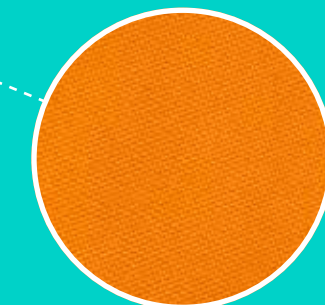
- Great protection from the rain
- 10,000mm rating on the hydrostatic head test
- More than 7 times the required level of water penetration specified for EN 343 class 3
 - Meets EN343 Class 3 for breathability
 - Hydrophilic membrane allows inner moisture to escape
 - Windproof membrane helps eliminate wearer chill
- Excellent performance in all weather conditions

QUICK PRODUCT GUIDE:



ROSEMOOR
Page 153

HANNAFORD
Page 157



WOMENS SUPERIOR WAISTCOATS

WE ARE PLEASED TO OFFER TWO WAISTCOATS THAT ARE SPECIFICALLY DESIGNED TO FIT A WOMAN.

As well as the great fit, there is a host of practical storage solutions that make them perfect for a wide variety of working environments.



LARGE AREA FOR PRINTING/BADGING ON FRONT & REAR

RETROMAX REFLECTIVE TAPE

FRONT ZIP FASTENER

2 FRONT BELLOVED MULTI-FUNCTIONAL STORAGE POCKETS

STOW-AWAY ID POCKET

SCOOPED SIDES ALLOWING POCKET ACCESS

Improved! Our entire women's range now features a smart grey trim.

'Lynmouth' Womens Superior Waistcoat WL11-Y

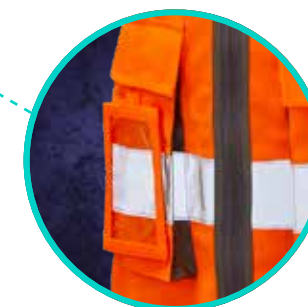


LYNMOUTH

ISO 20471 CLASS 1* WOMENS SUPERIOR WAISTCOAT

FABRIC 100% KNITTED POLYESTER

LENGTH 68-81cm SIZES XS-6XL (UK Womens Size 8-26)



LYNMOUTH
COLOUR Yellow
ITEM CODE WL11-Y
TRIM GREY
ISO 20471 *CLASS 1 (XS-M)
CLASS 2 (L-6XL)

LYNMOUTH NEW!
COLOUR Yellow/Navy
ITEM CODE WL11-Y/NV
TRIM NAVY
ISO 20471 CLASS 1 (XS-6XL)

LYNMOUTH
COLOUR Orange (RIS-3279-TOM)
ITEM CODE WL11-O
TRIM GREY
ISO 20471 *CLASS 1 (XS-M)
CLASS 2 (L-6XL)

BEAWORTHY

ISO 20471 CLASS 2* WOMENS SLEEVED SUPERIOR WAISTCOAT

FABRIC 100% KNITTED POLYESTER

TRIM GREY LENGTH 68-81cm

SIZES XS-6XL * Sizes L - 6XL conform to ISO 20471 Class 3 (UK Womens Size 8-26)



BEAWORTHY
COLOUR Yellow
ITEM CODE SL12-Y

BEAWORTHY
COLOUR Orange (RIS-3279-TOM)
ITEM CODE SL12-O

WOMENS POLO SHIRTS

OUR VERY SUCCESSFUL WOMENS POLO SHIRTS ARE NOW EVEN BETTER WITH A FABRIC UPGRADE TO COOLVIZ ULTRA™ POLYESTER.

This means improved performance in warmer weather conditions, with hydrophobic fabric that channels moisture away from the body and anti-microbial properties which protects from the build-up of bacteria. The garments are also now certified to 50 wash cycles, twice the industry standard.

FEATURES:

- Hydrophobic fabric draws moisture to the outer where it is evaporated
- Split hem design with extended back
- 3 button placket with contrast grey lining and buttons
- Anti-microbial finish to manage odour and bacterial build-up
- Soft handle fabric prevents irritation
- Segmented reflective tape for garment stretch and improved breathability
- RIS-3279-TOM compliant (orange only)
- UV protection to UPF40+ meeting EN13758-2
- Tested to 50 wash cycles



'Pippacott' Womens Coolviz Plus Polo Shirt PL03-O



PIPPACOTT
COLOUR Yellow
ITEM CODE PL03-Y

PIPPACOTT
COLOUR Orange (RIS-3279-TOM)
ITEM CODE PL03-O

PIPPACOTT

ISO 20471 CLASS 2 WOMENS COOLVIZ ULTRA POLO SHIRT

FABRIC
160GSM COOLVIZ
ULTRA POLYESTER

TRIM
SELF
COLOUR

LENGTH
68-82cm

SIZES
XS-6XL
(UK Womens Size 8-26)



3 BUTTON PLACKET WITH CONTRAST GREY LINING AND BUTTONS

POLLYFIELD

ISO 20471 CLASS 2* WOMENS COOLVIZ ULTRA SLEEVED POLO SHIRT

FABRIC
160GSM COOLVIZ
ULTRA POLYESTER

TRIM
SELF COLOUR

LENGTH
68-82cm

SIZES
XS-6XL
(UK Womens Size 8-26)

* Sizes Large-6XL conform to ISO 20471 Class 3



POLLYFIELD
COLOUR Yellow
ITEM CODE PL08-Y

POLLYFIELD
COLOUR Orange (RIS-3279-TOM)
ITEM CODE PL08-O

WOMENS MODESTY TUNIC

A new and innovative garment designed to bring more inclusion to the industries Leo Workwear supply. The Lilly Modesty Tunic has been designed to ensure the wearer is able to adhere to their religious beliefs whilst staying safe onsite and fully conforming to ISO 20471. The Tunic is also a great solution for any job role where a longer upper garment would be beneficial.



LILLY
COLOUR Yellow
ITEM CODE MT01-Y

LILLY
COLOUR Orange
ITEM CODE MT01-O
(RIS-3279-TOM)



LILLY

ISO 20471 CLASS 3 WOMENS COOLVIZ ULTRA MODESTY TUNIC

FABRIC
160GSM COOLVIZ ULTRA POLYESTER

TRIM
ORANGE

SIZES
S - UK Womens Size 8
M - UK Womens Size 10-12
L - UK Womens Size 14-16

LENGTH
90cm



FEATURES:

- Modest fit • Segmented reflective tape • Inherently anti-microbial for protection against the build-up of bacteria and odour
- Hydrophobic fabric draws moisture to the outer where it is evaporated
- Elastic button loop at neck for ease of putting on and taking off
- UV Protection to UPF 40+ • Soft handle fabric prevents irritation
- Segmented reflective tape for garment stretch and improved breathability
- RIS-3279-TOM compliant (orange only) • Tested to 50 wash cycles

WOMENS BODYWARMERS

THE SANDYMERE IS A GREAT NEW ADDITION TO THE LEO WOMENS RANGE.

The snug quilt lining ensures the wearer stays warm whilst the water repellent outer fabric offers some protection from those unexpected showers. A truly practical and versatile garment that looks fantastic.



SANDYMERE
COLOUR Yellow
ITEM CODE BWL01-Y

SANDYMERE
COLOUR Orange
ITEM CODE BWL01-O
(RIS-3279-TOM)

SANDYMERE

ISO 20471 CLASS 1* WOMENS BODYWARMER

FABRIC
300D PU COATED POLYESTER

TRIM
GREY

LENGTH
62-80cm

SIZES
XS-6XL
(UK Womens Size 8-26)

* Sizes L - 6XL conform to ISO 20471 Class 2

FEATURES:

- Water Repellent Outer Fabric • Warm Quilt Lining
- Fleece Lined Neck • Zipped Chest Pocket with Puller
- Internal Zipped Wallet Pocket • Front Storage Pockets
- Hand Warmer Pockets • YKK Main Zip with Puller

WOMENS SWEATSHIRTS

A fantastic new mid-layer for women, the Hollicombe Sweatshirt is warm, durable and very comfortable being crafted from our diamond quilt fabric, with 100% cotton against the skin, and 100% polyester on the outer. The garment also conforms to 50 wash cycles, twice the industry standard.

FEATURES:

- Smart and practical contrast grey cuffs and hem
- Stand-Up Collar
- Chunky Front Zip-Fastener with Puller
- Zipped Hand Pockets with Pullers
- Lycra Stretch Reflective Tape for optimal wearer movement
- Certified to 50 wash cycles, twice the industry standard



HOLLICOMBE
COLOUR Orange (RIS-3279-TOM)
ITEM CODE SSL03-O

HOLLICOMBE
COLOUR Yellow
ITEM CODE SSL03-Y

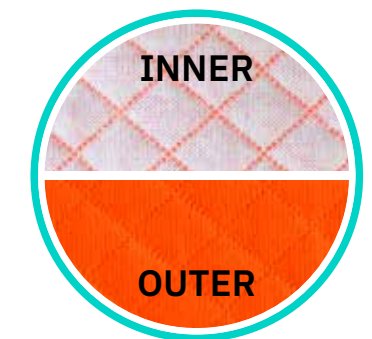
HOLLICOMBE

ISO 20471 CLASS 2
WOMENS ZIPPED SWEATSHIRT

FABRIC
300GSM DIAMOND QUILT,
50% POLYESTER, 50% COTTON

TRIM GREY | **LENGTH** 64-77cm

SIZES
XS-6XL
(UK Womens Size 8-26)



300gsm DIAMOND QUILT
50% Polyester, 50% Cotton

Outer Layer:
100% polyester fabric for durability
Inner Layer:
100% cotton against the skin for wearer comfort

WOMENS SOFTSHELL JACKETS

THE HONEYWELL SOFTSHELL JACKET, A FANTASTIC MULTI-SEASONAL GARMENT SPECIFICALLY DESIGNED TO FIT THE FEMALE WEARER.

Crafted from a breathable and water resistant 3-layer fabric, with stretch properties for improved freedom of movement. This great looking and versatile product is now finished with a smart grey trim.

FEATURES:

- Zipped Front Hand Pockets with Pullers
- Internal Zip-Fastened Patch Pocket
- Shock-Cord Hem Adjuster
- Cuff Adjusters
- 2 x Internal Drop Pockets



Honeywell Womens Softshell Jacket SJL01-0

SHELL



HONEYWELL
COLOUR Yellow
ITEM CODE SJL01-Y

HONEYWELL
COLOUR Orange
(RIS-3279-TOM)
ITEM CODE SJL01-0

HONEYWELL

ISO 20471 CLASS 2
WOMENS SOFTSHELL JACKET

FABRIC
100% STRETCH POLYESTER TWILL,
3-LAYER, WITH INTERNAL MICRO-FLEECE

TRIM GREY | **LENGTH** 62-80CM | **SIZES** XS-6XL
(UK Womens Size 8-26)

WOMENS BREATHABLE JACKETS

THE WOMENS ROSEMOOR JACKET IS INSPIRED BY THE OUTDOOR EXTREME SPORTS MARKET WHERE FUNCTIONALITY, DURABILITY AND FREEDOM OF MOVEMENT ARE PARAMOUNT.

We've fused these attributes with outstanding high visibility performance to create an exceptional garment for the modern female workforce.



'Rosemoor' Womens Breathable Jacket JL04-Y

ROSEMOOR

ISO 20471 CLASS 3*
WOMENS BREATHABLE
JACKET

FABRIC
LTEC 10K 2-LAYER
300D LAMINATED POLYESTER,
EN 343 3,3

TRIM GREY | **LENGTH** 67-85cm

SIZES
XXS-4XL/5XL

(UK Womens Size 6-22/24)

* Size XXS conforms to ISO 20471 Class 2

LTEC 10K

ROSEMOOR

COLOUR Yellow
ITEM CODE JL04-Y



FULL LENGTH
VELCRO-FASTENED
STORM FLAP

UNDER-ARM ZIPPED
OPENING WITH
MESH VENTILATION

ARTICULATED
SLEEVES

ZIPPED FRONT HAND
WARMER POCKETS

VELCRO FASTENED
CUFF ADJUSTER

SHOCK CORD
HEM ADJUSTER

ROSEMOOR

COLOUR Orange
(RIS-3279-TOM)
ITEM CODE JL04-O



ZIP-DETACHABLE
TWO-WAY ADJUSTABLE
HOOD WITH STIFF VISOR

MICRO-FLEECE
LINED COLLAR

MESH
LINED BODY

RELAXED FIT

2 X INTERNAL
DROP POCKETS

INTERNAL
NELSON POCKET

YKK MAIN ZIP

WOMENS STRETCH WORK TROUSERS

EXTENSIVE RESEARCH AND FOCUS GROUPS ON THE EXISTING LEO RANGE HAS CULMINATED IN THE CREATION OF A NEW STRETCH WORK TROUSER, THE STARCROSS.

Made from a stretch fabric and with stretchy segmented reflective tape, this trouser offers a fantastic fit and incredible freedom of movement for the wearer. With a soft, warm backing and water-repellent finish, the garment is a truly versatile, multi-seasonal trouser that fits like a dream.



INCREDIBLE FREEDOM OF MOVEMENT

ELASTICATED WAISTBAND WITH ADJUSTABLE BELT

CLICK AND CLOSE BUCKLE

YKK FLY & FRONT BUTTON CLOSURE

CARGO STYLE LEG POCKET

ARTICULATED KNEES

75MM SEGMENTED REFLECTIVE TAPE FOR GARMENT STRETCH

2 X ZIP-FASTENED FRONT POCKETS



STARCROSS
COLOUR Orange (RIS-3279-TOM)
ITEM CODE WTL01-O

STARCROSS
COLOUR Yellow
ITEM CODE WTL01-Y

CONTOURED WAISTBAND FOR ADDITIONAL COVERAGE

REAR PATCH POCKET



STARCROSS

ISO 20471 CLASS 2 WOMENS STRETCH WORK TROUSER

FABRIC
RIP STOP SOFTSHELL WITH WATER REPELLENT FINISH, 91% POLYESTER, 9% SPANDEX, BRUSHED TRICOT BACKING

SIZES
XXS-3XL/4XL (UK Women's 6-20/22)

WOMENS CARGO TROUSERS

The Pennymoor Cargo Trousers have been designed with comfort, durability and functionality in mind. The trousers feature high quality components and enjoy smart grey trim detailing; they are perfect for working on roads or near the trackside.

7 BELT LOOPS

METAL BUTTON FASTENER AND YKK BRASS ZIP FLY

BACK PATCH POCKET

CARGO STYLE LEG POCKETS

INTERNAL KNEE-PAD POCKETS

QUADRUPLE STITCHED REFLECTIVE TAPE

TRIPLE STITCHED MAIN SEAMS



PENNYMOOR
COLOUR Yellow
ITEM CODE CL01-Y

PENNYMOOR
COLOUR Orange (RIS-3279-TOM)
ITEM CODE CL01-O

PENNYMOOR

ISO 20471 CLASS 2
WOMENS CARGO TROUSER

FABRIC
280GSM POLY/COTTON WITH WATER AND STAIN REPELLENT FINISH

SIZES
SHORT LEG: Length 27" / Waist: 6-26 UK Womens
REGULAR LEG: Length 29" / Waist: 6-26 UK Womens
TALL LEG: Length 31" / Waist: 6-26 UK Womens

WOMENS OVERTROUSERS

The Hannaford Overtrousers are easy to put on and take off thanks to its half-leg zipped side opening. Crafted from windproof, waterproof and breathable fabric and featuring smart grey detailing, the Hannaford is perfect for keeping you visible and dry when working in adverse weather conditions.

ELASTICATED WAIST WITH SHOCK CORD ADJUSTER

SIDE POCKET ACCESS



HANNAFORD
COLOUR Yellow
ITEM CODE LL02-Y

HANNAFORD
COLOUR Orange (RIS-3279-TOM)
ITEM CODE LL02-O



HALF-LEG SIDE OPENING WITH ZIP

VELCRO ANKLE ADJUSTER TABS

HANNAFORD

ISO 20471 CLASS 2 WOMENS
BREATHABLE OVERTROUSER

FABRIC
LTEC 10K
2-LAYER LAMINATED
POLYESTER, EN343 3,3

LTEC10K

SIZES
XS-6XL

MATERNITY RANGE

Designed to make life safer and more comfortable for pregnant women at work, Leo Workwear are delighted to introduce the first stocked maternity garments conforming to high visibility standard ISO 20471. With features such as an elasticated over-bump band and waist adjustment on the Verity Cargo Trousers and the elasticated side seams on the two Polo Shirt models, we've ensured these garments work with the wearer and can be worn all the way from bump to baby.



LOVACOTT
COLOUR Yellow
ITEM CODE PM03-Y

LOVACOTT
COLOUR Orange (RIS-3279-TOM)
ITEM CODE PM03-O

LOVACOTT

ISO 20471 CLASS 2 COOLVIZ
ULTRA MATERNITY POLO SHIRT

FABRIC
160GSM COOLVIZ
ULTRA POLYESTER

TRIM
GREY

LENGTH
68-72cm

SIZES
S-XXL
(UK Womens Size 10-18)

FEATURES:

- Elasticated Side Seams
- Segmented Reflective Tape
- Split Hem Design with extended back
- High-vis collar with contrast grey reverse, lining & neck tape
- 3 button placket with contrast grey lining & buttons



YARNACOTT

ISO 20471 CLASS 2
COOLVIZ ULTRA MATERNITY
SLEEVED POLO SHIRT

FABRIC
160GSM COOLVIZ
ULTRA POLYESTER

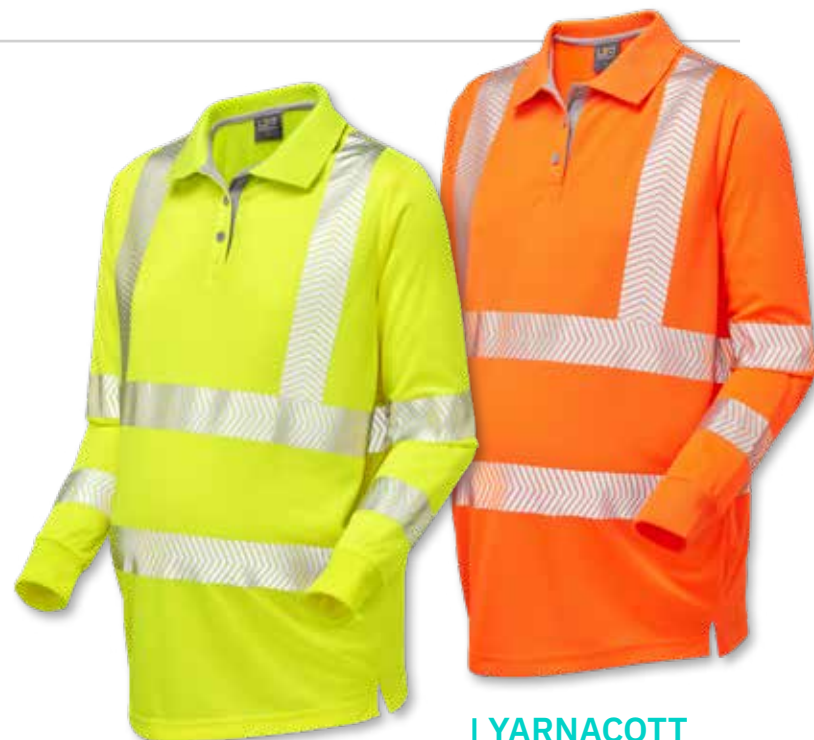
TRIM
GREY

LENGTH
68-72cm

SIZES
S-XXL
(UK Womens Size 10-18)

FEATURES:

As per 'Lovacott' features above



YARNACOTT
COLOUR Yellow
ITEM CODE PM08-Y

YARNACOTT
COLOUR Orange (RIS-3279-TOM)
ITEM CODE PM08-O



VERITY
COLOUR Yellow
ITEM CODE CM01-Y

VERITY
COLOUR Orange (RIS-3279-TOM)
ITEM CODE CM01-O

VERITY

ISO 20471 CLASS 2
MATERNITY CARGO TROUSER

FABRIC
280GSM POLY/COTTON WITH WATER
REPELLENT AND STAIN REPELLENT FINISH

SIZES
XS - UK Womens Size 8
S/M - UK Womens Size 10-12
L/XL - UK Womens Size 14-16
XXL/3XL - UK Womens Size 18-20

FEATURES:

- Elasticated over-bump band
- Side adjustment elastic
- Triple-stitched main seams
- Cargo style leg pockets with grey reflective piping
- Back patch pocket
- Quadruple-stitched reflective tape

NEONSTARS

CHILDRENS WAISTCOATS

NOTHING IS MORE IMPORTANT THAN KEEPING OUR CHILDREN SAFE, NEONSTARS WAISTCOATS ENSURE THEY ARE SEEN DAY AND NIGHT.

Available in four bright colours, with a striking royal blue contrast trim and lots of space for a logo or school crest. These waistcoats come with the added assurance of conforming to EN 1150, the high visibility standard for non-professional use.



'Neonstars' Childrens Waistcoats CW01-Y and CW01-O



NEONSTARS

EN 1150 CHILDRENS WAISTCOATS

FABRIC
100% KNITTED
POLYESTER

TRIM
ROYAL
BLUE

FASTENER
VELCRO

LENGTH
45-57CM



NEONSTARS

COLOUR Yellow
ITEM CODE CW01-Y



NEONSTARS

COLOUR Lime
ITEM CODE CW01-LM



NEONSTARS

COLOUR Pink
ITEM CODE CW01-PK



NEONSTARS

COLOUR Orange
ITEM CODE CW01-O

SIZE GUIDE

Please note that all measurements are "to fit"

Mens Garments

| Size | XS | Small | Medium | Large | XL | XXL | 3XL | 4XL | 5XL | 6XL |
|-------------------|-------|-------|--------|---------|---------|---------|---------|---------|---------|---------|
| Chest To Fit (cm) | 78-86 | 86-94 | 94-102 | 102-110 | 110-118 | 118-126 | 126-134 | 134-142 | 142-150 | 150-158 |
| Waist To Fit (cm) | N/A | 71-79 | 79-86 | 86-94 | 94-102 | 102-109 | 109-117 | 117-124 | 124-132 | 132-140 |

Mens Cargo Trousers - Bideford (CT01), Ilfracombe (CT02) & Yelland (CT03)

| Waist Size (in) | 28 | 30 | 32 | 34 | 36 | 38 | 40 | 42 | 44 |
|-------------------|-------|-------|-------|-------|-------|-------|---------|---------|---------|
| Waist Size (cm) | 71 | 76 | 81 | 86 | 91 | 97 | 102 | 107 | 112 |
| Waist To Fit (cm) | 70-74 | 75-79 | 80-84 | 85-89 | 90-94 | 95-99 | 100-104 | 105-109 | 110-114 |

| Waist Size (in) | 46 | 48 | 50 | 52 | 54 | 56 | 58 | 60 |
|-------------------|---------|---------|---------|---------|---------|---------|---------|---------|
| Waist Size (cm) | 117 | 122 | 127 | 132 | 137 | 142 | 147 | 152 |
| Waist To Fit (cm) | 115-119 | 120-124 | 125-129 | 130-134 | 135-139 | 140-144 | 145-149 | 150-154 |

| Leg Length | Short | Regular | Tall |
|-------------|-------|---------|------|
| Length (in) | 29 | 31 | 33 |
| Length (cm) | 74 | 79 | 84 |

Womens Upper Garments (WL11 / SL12 / PL03 / PL08 / SJL01 / SSL03 / BWL01)

| Size | XS | Small | Medium | Large | XL | XXL | 3XL | 4XL | 5XL | 6XL |
|-------------------|-------|-------|--------|-------|--------|---------|---------|---------|---------|---------|
| UK Womens Size | 8 | 10 | 12 | 14 | 16 | 18 | 20 | 22 | 24 | 26 |
| Chest To Fit (cm) | 69-76 | 76-83 | 83-90 | 90-97 | 97-104 | 104-111 | 111-118 | 118-125 | 125-132 | 132-139 |

Womens Rosemoor Jacket (JL04)

| Size | XXS | XS | Small/Medium | Large/XL | XXL/3XL | 4XL/5XL |
|-------------------|-------|-------|--------------|----------|---------|---------|
| UK Womens Size | 6 | 8 | 10-12 | 14-16 | 18-20 | 22-24 |
| Chest To Fit (cm) | 62-69 | 69-76 | 76-90 | 90-104 | 104-118 | 118-132 |

Womens Lilly Modesty Tunic (MT01)

| Size | Small | Medium | Large |
|-------------------|-------|--------|--------|
| UK Womens Size | 8 | 10-12 | 14-16 |
| Chest To Fit (cm) | 69-76 | 76-90 | 90-104 |

Womens Cargo Trousers (CL01), Womens Over Trousers (LL02)

| Size | 6 | 8 | 10 | 12 | 14 | 16 | 18 | 20 | 22 | 24 | 26 |
|-------------------|-------|-------|-------|-------|-------|-------|--------|---------|---------|---------|---------|
| Waist To Fit (cm) | 56-62 | 62-68 | 68-74 | 74-82 | 82-90 | 90-98 | 98-106 | 106-114 | 114-122 | 122-130 | 130-138 |

| Leg Length | Short | Regular | Tall |
|-------------|-------|---------|------|
| Length (in) | 27 | 29 | 31 |
| Length (cm) | 69 | 74 | 79 |

Womens Stretch Trousers (WTL01)

| Size | XXS | XS/S | M/L | XL/XXL | 3XL/4XL |
|-------------------|-------|-------|-------|--------|---------|
| UK Womens Size | 6 | 8-10 | 12-14 | 16-18 | 20-22 |
| Waist To Fit (cm) | 56-62 | 62-74 | 74-90 | 90-106 | 106-122 |

Womens Maternity Polos (PM03 / PM08)

| Size | Small | Medium | Large | XL | XXL |
|-------------------|-------|--------|-------|--------|---------|
| UK Womens Size | 10 | 12 | 14 | 16 | 18 |
| Chest To Fit (cm) | 76-83 | 83-90 | 90-97 | 97-104 | 104-111 |

Womens Maternity Trousers (CM01)

| Size | X-Small | Small/Medium | Large/XL | XXL/3XL |
|-------------------|---------|--------------|----------|---------|
| UK Womens Size | 8 | 10-12 | 14-16 | 18-20 |
| Waist To Fit (cm) | 62-68 | 68-82 | 82-98 | 98-114 |

Childrens Garments (CW01)

| Size | X-Small | Small | Medium | Large | XL |
|-------------------|---------|---------|---------|---------|---------|
| Age | 3-4 | 5-6 | 7-8 | 9-10 | 11+ |
| Chest To Fit (cm) | 58-66 | 66-74 | 74-82 | 82-90 | 90-98 |
| Height (cm) | 92-104 | 104-116 | 116-128 | 128-140 | 140-152 |

WOMENS SIZE GUIDE

How to measure

C - CHEST

Measure around the fullest part of the chest.

W - WAIST

Measure around the narrowest part of the natural waistline.

H - HIPS

Measure the lower hip 20cm from the natural waistline.

I - INSIDE LEG

Measure the inside of the leg from the crotch to the ankle.

| | Size | XXS | XS | S | M | L | XL |
|-----------|-------------------|-------|-------|-------|-------|--------|---------|
| | UK Womens size | 6 | 8 | 10 | 12 | 14 | 16 |
| C | Chest to Fit (cm) | 62-69 | 69-76 | 76-83 | 83-90 | 90-97 | 97-104 |
| W | Waist to Fit (cm) | 56-62 | 62-68 | 68-74 | 74-82 | 82-90 | 90-98 |
| H | Hips to Fit (cm) | 68-74 | 74-80 | 80-86 | 86-94 | 94-102 | 102-110 |
| I - Short | Inside Leg (cm) | N/A | 66 | 66 | 66 | 66 | 66 |
| I - Reg | Inside Leg (cm) | N/A | 74 | 74 | 74 | 74 | 74 |
| I - Tall | Inside Leg (cm) | N/A | 82 | 82 | 82 | 82 | 82 |

| | Size | XXL | 3XL | 4XL | 5XL | 6XL |
|-----------|-------------------|---------|---------|---------|---------|---------|
| | UK Womens size | 18 | 20 | 22 | 24 | 26 |
| C | Chest to Fit (cm) | 104-111 | 111-118 | 118-125 | 125-132 | 132-139 |
| W | Waist to Fit (cm) | 98-106 | 106-114 | 114-122 | 122-130 | 130-138 |
| H | Hips to Fit (cm) | 110-118 | 118-126 | 126-134 | 134-142 | 142-150 |
| I - Short | Inside Leg (cm) | 66 | 66 | 66 | 66 | 66 |
| I - Reg | Inside Leg (cm) | 74 | 74 | 74 | 74 | 74 |
| I - Tall | Inside Leg (cm) | 82 | 82 | 82 | 82 | 82 |



Women's Range Matrix by UK Women's Sizing

| Garment Code | Garment Description | UK Womens Size | | | | | | | | | | |
|--------------|---|----------------|------|------|-----|------|--------|---------|---------|---------|---------|-----|
| | | 6 | 8 | 10 | 12 | 14 | 16 | 18 | 20 | 22 | 24 | 26 |
| BWL01 | Sandymere ISO 20471 Class 1 Women's Bodywarmer | - | XS | S | M | L | XL | XXL | 3XL | 4XL | 5XL | 6XL |
| JL04 | Rosemoor ISO 20471 Class 3 Breathable Women's Jacket | XXS | XS | S/M | S/M | L/XL | L/XL | XXL/3XL | XXL/3XL | 4XL/5XL | 4XL/5XL | - |
| LL02 | Hannaford ISO 20471 Class 2 Breathable Women's Overtrouser | - | XS | S | M | L | XL | XXL | 3XL | 4XL | 5XL | 6XL |
| MT01 | Lilly ISO 20471 Class 3 Coolviz Ultra Women's Modesty Tunic | - | S | M | M | L | L | - | - | - | - | - |
| PL03 | Pippacott ISO 20471 Class 2 Coolviz Ultra Women's Polo Shirt | - | XS | S | M | L | XL | XXL | 3XL | 4XL | 5XL | 6XL |
| PL08 | Pollyfield ISO 20471 Class 2 Coolviz Ultra Women's Sleeved Polo Shirt | - | XS | S | M | L | XL | XXL | 3XL | 4XL | 5XL | 6XL |
| SJL01 | Honeywell ISO 20471 Class 2 Women's Softshell Jacket | - | XS | S | M | L | XL | XXL | 3XL | 4XL | 5XL | 6XL |
| SL12 | Beaworthy ISO 20471 Class 2 Women's Sleeved Superior Waistcoat | - | XS | S | M | L | XL | XXL | 3XL | 4XL | 5XL | 6XL |
| SSL03 | Hollicombe ISO 20471 Class 2 Women's Zipped Sweatshirt | - | XS | S | M | L | XL | XXL | 3XL | 4XL | 5XL | 6XL |
| WTL01 | Starcross ISO 20471 Class 2 Women's Stretch Work Trouser | XXS | XS/S | XS/S | M/L | M/L | XL/XXL | XL/XXL | 3XL/4XL | 3XL/4XL | - | - |
| WL11 | Lynmouth ISO 20471 Class 1 Women's Superior Waistcoat | - | XS | S | M | L | XL | XXL | 3XL | 4XL | 5XL | 6XL |

INDEX

by name

| Name | Page | Name | Page |
|-------------|---------|-------------|---------|
| Appledore | 118 | Lundy | 120-121 |
| Arlington | 29 | Lynmouth | 143 |
| Ashford | 71 | Lynton | 18-21 |
| Barbrook | 136 | Marisco | 106-107 |
| Barnstaple | 35 | Marwood | 100 |
| Barricane | 68 | Meeth | 37 |
| Beaworthy | 143 | Merton | 39 |
| Bickington | 115 | Meshaw | 42 |
| Bickleton | 137 | Milford | 37 |
| Bideford | 128-130 | Molland | 133 |
| Bradworthy | 15 | Mortehoe | 63 |
| Braunton | 71 | Neonstars | 160-161 |
| Broadsands | 64-65 | Newport | 71 |
| Brynsworthy | 79 | Northam | 124 |
| Buckland | 90-91 | Parkham | 39 |
| Burrington | 31 | Pennymoor | 156 |
| Capstone | 75 | Peppercombe | 61 |
| Chapelton | 34 | Pilton | 46-49 |
| Chivenor | 114 | Pippacott | 145 |
| Clifton | 41 | Pollyfield | 145 |
| Clovelly | 102-103 | Portmore | 137 |
| Cobbaton | 29 | Putsborough | 73 |
| Combesgate | 82-83 | Putford | 137 |
| Commodore | 44-45 | Rockham | 59 |
| Copplestone | 34 | Rosemoor | 152-153 |
| Cranford | 39 | Rumsam | 14 |
| Croyde | 59 | Sandymere | 147 |
| Dartmoor | 110-111 | Saunton | 81 |
| Eggesford | 33 | Shirwell | 17 |
| Exmoor | 112-113 | Starcross | 154-155 |
| Forches | 17 | Sticklepath | 43 |
| Foreland | 24-25 | Swimbridge | 67 |
| Fremington | 31 | Taddiport | 136 |
| Goodleigh | 80 | Tarka | 12-13 |
| Gorwell | 17 | Tawstock | 98-99 |
| Hannaford | 157 | Torrige | 101 |
| Hartland | 88-89 | Torrington | 92-93 |
| Hawkridge | 126-127 | Umberleigh | 33 |
| Heddon | 26 | Velator | 14 |
| Hollicombe | 148-149 | Verity | 159 |
| Honeywell | 150-151 | Viroblock® | 84-85 |
| Huish | 43 | Watermouth | 75 |
| Ilfracombe | 131 | Watersmeet | 63 |
| Instow | 119 | Watertown | 122-123 |
| Jacobstowe | 41 | Winkleigh | 79 |
| Landcross | 125 | Woolacombe | 61 |
| Lapford | 33 | Woolsery | 67 |
| Larkstone | 73 | Wrafton | 22-23 |
| Libbaton | 81 | Wringcliff | 69 |
| Lilly | 146 | Yarnacott | 158 |
| Lovacott | 158 | Yelland | 132 |

by code

| Name | Page | Name | Page |
|-------|---------|-------|---------|
| A01 | 98-99 | S11 | 39 |
| A02 | 137 | S12 | 22-23 |
| A03 | 100 | S13 | 136 |
| A04 | 102-103 | S14 | 136 |
| A06 | 101 | S15 | 39 |
| A20 | 106-107 | S17 | 42 |
| BB01 | 124 | S18 | 43 |
| BW01 | 92-93 | S20 | 31 |
| BWL01 | 147 | S24 | 26 |
| CL01 | 156 | S25 | 43 |
| CM01 | 159 | SJ01 | 90-91 |
| CT01 | 128-130 | SJL01 | 150-151 |
| CT02 | 131 | SL12 | 143 |
| CT03 | 132 | SN01 | 84-85 |
| CV01 | 133 | SS01 | 79 |
| CV02 | 122-123 | SS02 | 81 |
| CW01 | 160-161 | SS03 | 81 |
| F01 | 88-89 | SS04 | 80 |
| J01 | 114 | SS05 | 79 |
| J02 | 115 | SS06 | 82-83 |
| J03 | 137 | SSL03 | 148-149 |
| J04 | 112-113 | T01 | 71 |
| J05 | 110-111 | T02 | 71 |
| JL04 | 152-153 | T03 | 73 |
| JT01 | 126-127 | T08 | 75 |
| L01 | 118 | T12 | 73 |
| L02 | 119 | T13 | 75 |
| L20 | 120-121 | V01 | 71 |
| LL02 | 157 | W01 | 12-13 |
| MT01 | 146 | W02 | 14 |
| P01 | 59 | W03 | 14 |
| P02 | 59 | W04 | 29 |
| P03 | 61 | W05 | 46-49 |
| P05 | 67 | W08 | 37 |
| P06 | 67 | W09 | 15 |
| P07 | 137 | W11 | 18-21 |
| P08 | 68 | W14 | 33 |
| P09 | 64-65 | W15 | 33 |
| P10 | 63 | W16 | 34 |
| P11 | 63 | W18 | 34 |
| P14 | 61 | W19 | 41 |
| P15 | 69 | W20 | 29 |
| PL03 | 145 | W22 | 35 |
| PL08 | 145 | W23 | 37 |
| PM03 | 158 | W24 | 24-25 |
| PM08 | 158 | W25 | 41 |
| S01 | 17 | W26 | 33 |
| S02 | 17 | W35 | 44-45 |
| S03 | 17 | WL11 | 143 |
| S04 | 31 | WT01 | 125 |
| S10 | 39 | WTL01 | 154-155 |



1 Whiddon Drive, Barnstaple,
Devon, United Kingdom EX32 8RY
Telephone 01271 378904
Email sales@leoworkwear.com
www.leoworkwear.com

