



**STEP UP IN  
COMFORT**

**EDITION 22**

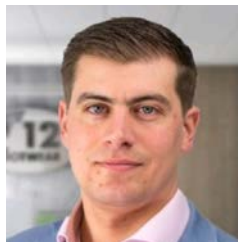


# WELCOME

It's always an exciting feeling to be introducing a new edition of our catalogue, as it gives V12 another opportunity to show our customers and wearers our ever-expanding and increasingly innovative range of safety footwear. Inside you'll find the much-loved and trusted V12 classics, but you'll also see several new and cutting-edge safety styles. The one thing that unites these lines - however established or new they are - is that they all provide the wearer with top-level comfort, outstanding durability and the highest standards of safety.



George Turner  
Managing Director





# CONTENTS

Introduction	2
Sustainability	6
Quality Assurance	9
Key Features and Sizing	10
Safety Standards	11
The Comfort Fit System	12
Soles	14
Boots	16
Hi-Legs	22
Dealers	26
Wellingtons	28
Riggers	30
Shoes	31
Trainers & Hikers	32
Women's Fit	34
Accessories	38
Dynamic Arch Insole	42
Industries	44
Support for Distributors	45
Training	46
Audit & Trialing	47
Entire Range	48
Safety Standards	50

# JAMES



Pictured: the Turner shoe shop circa 1960



# TURNER

## **TRADITION AND TECHNOLOGY**

The Turner family have been footwear specialists since 1890, and it's because we've been trading for well over a century that we've gained a global business reach, received numerous awards and provided protection to countless wearers down the years.

Our heritage might be deeply rooted, but our passion lies in the future. We believe that to give our wearers the very best foot protection, innovation is key. That's why we constantly embrace pioneering design and advanced manufacturing methods to lead the way in safety footwear.



Repairs  
UNBEATABLE PRICES?

back to school

Thank You  
Customer

# SUSTAINABILITY

**Our aim is to provide maximum protection for the wearer with minimal impact on the planet.**

Responsible, ethical production is essential to ensure our planet's longevity. We are committed to giving our customers the high-performance safety footwear they've come to expect, whilst also embarking on a continuing mission for environmentally sound manufacturing in every phase of our boots' life cycle – starting with design, through the manufacturing and shipping stages, right down to the packaging.



is a safety boot collection offering maximum protection for the wearer, with minimal impact on the planet.

Sustainability is a team game. Our suppliers are constantly looking for more environmentally responsible materials, our upcoming production move to Europe will mean a reduced carbon footprint, and our dedicated Sustainability Team keeps our focus on the environment at the fore.

We recently became the first UK safety footwear company to launch a carbon neutral range by following our three key sustainability steps of Reduce, Extend and Offset. As a result, the Lynx range

“ It's great to be part of a team that is so committed to working with world-class consultants and accredited third parties so we can lead the way in safety footwear sustainability.

**CHLOE OAKLEY**

Operations Coordinator



**CLIMATE NEUTRAL NOW**

**RACE TO ZERO**

## TAKING SUSTAINABILITY TO THE NEXT LEVEL

It's always been the V12 way to get the best results by working closely with the experts, and our approach to sustainability is no different. That's why we are maximising our sustainability practices by working with a carbon consulting group and three significant global initiatives. Joining Race To Zero, SME Climate Hub and Climate Neutral Now will mean that we can track, report and reduce our greenhouse gas emissions and take our sustainable performance to the next level.

And with other highly innovative production processes embedded in our supply chain such as waterless dying, waste-reducing 3D sampling, toxin-free adhesives and the increased use of solar energy and water purification systems in our factories, you can be sure that when you put on a V12 boot, you're wearing a product designed and built for sustainability and safety.



**See our Carbon Neutral Range on page 16**



**To learn more about  
our sustainability journey,  
open the QR code below.**

[info.V12footwear.com/sustainability](http://info.V12footwear.com/sustainability)

# THE BENCHMARK IN SAFETY

At V12, it starts with the wearer.  
Our safety footwear is designed for  
comfort and confidence; all day, every day.

We ensure our boots are as tough as the  
environments they face, and as supportive  
to soles as we are to customers. Because  
healthy, comfortable feet make a difference  
to people and productivity.

For over 20 years we've been researching,  
testing and innovating; embracing new  
technologies and better materials to protect  
wearers and provide peace of mind. We're  
proud to help businesses step up in comfort.

## SAFETY



We pride ourselves  
on our rigorous testing  
methods, ensuring our  
boots deliver consistent  
protection in the harshest  
of working environments.

## COMFORT



Every V12 boot has been  
expertly designed to provide  
the utmost comfort for  
wearers, because when  
feet are comfy, they're the last  
thing on your mind.

## DURABILITY



We're confident that  
our footwear performs,  
time after time.  
Which is why we offer  
a 200-day warranty  
on all our products.

# OUR CUSTOMER SERVICE PROMISE

1



Next day delivery on UK  
orders placed before 4pm

2



Large UK and Europe  
stock holding

3



Dedicated Account Managers  
and 8 - 5 customer service



# INDEPENDENT QUALITY ASSURANCE



Rolf Turner,  
Supply Chain Manager

All V12 Footwear products are independently tested in world class laboratories before being released to market. We carry out ongoing rigorous quality testing to guarantee consistency of production.

We use only the best components and materials that have been tried and tested. EU declarations of conformity are available to download from our website for all of our safety products. We are relentless about quality control to drive down returns and drive up customer satisfaction, and are proud to have one of the lowest returns rates in the industry.



## THE BSIF REGISTERED SAFETY SUPPLIER SCHEME

We are an associate of the British Safety Industry Federation Registered Safety Supplier Scheme. Under the Registered Safety Supplier Scheme, V12 Footwear formally declares and commits to selling only certified PPE that performs to the claims made and carries the CE and UKCA mark. As additional assurance, our products are independently randomly audited by the BSIF to verify conformance.



# KEYMARK

A voluntary, third-party European certification mark, The 'Keymark' was established and is jointly owned by two European standards organisations – CEN (European Committee for Standardisation) and CENELEC (European Committee for Electrotechnical Standardisation).



Keymark assures the consumer or user of a product that not only have initial samples been assessed and satisfied the requirements of the relevant European standard for CE-marking purposes, but also that ongoing production conforms consistently.

To find out more, go to [blog.V12footwear.com/independent-quality-assurance-at-v12-footwear](http://blog.V12footwear.com/independent-quality-assurance-at-v12-footwear)



# SATRA

The Satra Quality Mark is used to prove consistent quality and give customers extra confidence in buying SATRA Quality Mark products. The Quality Mark logo is exclusive to member companies and signifies that the product has been assessed as 'fit for purpose'. It also indicates that the product is from a manufacturing environment which includes ongoing product conformity assessment through a quality assurance system.

# KEY FEATURES



ANTI-STATIC



HEAT-RESISTANT



METAL-FREE



ZIP SIDE



COMPOSITE MIDSOLE



STEEL MIDSOLE



COMPOSITE TOECAP



STEEL TOECAP



KENNEDY GRATING SLIP-TESTED



SCAFFOLD BOARD SLIP-TESTED



ANTI-SLIP TRACTION



IMPACT-RESIST ANKLE PROTECTION



METATARSAL PROTECTION



HARD-WEARING SCUFF CAP



WATERPROOF + BREATHABLE



THERMAL LINING



VEGAN-FRIENDLY



NON-SAFETY



# SIZE GUIDE

Find out more about our sizing at: [blog.V12footwear.com/safety-boot-sizing-why-brands-differ](http://blog.V12footwear.com/safety-boot-sizing-why-brands-differ)

<b>UK</b>	1	2	3	4	5	6	6.5	7	8	9	10	10.5	11	12	13	14	15	16
<b>EUR</b>	34	35	36	37	38	39	40	41	42	43	44	45	46	47	48	49	50	51
<b>US</b>	2	3	4	5	6	7	7.5	8	9	10	11	11.5	12	13	14	15	16	17

# SAFETY STANDARDS

Classification	Test Performed	Safety Footwear					Wellingtons	
		SBP	S1	S2	S3	S1P	S4	S5
<b>SB</b>	Toe protection tested with 200 joules impact and 15 kilonewtons compression force	✓	✓	✓	✓	✓	✓	✓
<b>P</b>	Penetration-resistant outsole tested at 1.1 kilonewtons	✓			✓	✓		✓
<b>A</b>	Electrical resistance between foot and ground of between 0.1 and 1000 mega ohms		✓	✓	✓	✓	✓	✓
<b>E</b>	Energy absorption of the seat region tested at 20 joules		✓	✓	✓	✓	✓	✓
<b>WRU</b>	Water-resistant upper leather			✓	✓		✓	✓

## Additional Test Classifications

- AN** Ankle protection tested to 10 joules impact and the transmitted force cannot exceed 10 kilonewtons
- C** Conductive footwear – the electrical resistance should not be greater than 100 ohms
- CI** Insulation against the cold – temperature drops less than 10°C when tested at -17°C
- CR** Cut resistance of upper
- ESD** Electrical resistance between foot and ground of between 0.1 and 100 mega ohms
- FO** Resistance of outsole to fuel oil
- HI** Heat insulation of sole complex – outsole tested to 150°C. The top surface of the insole shall not increase by more than 22°C
- HRO** Heat-resistant outsole compound tested at 300°C
- M** Metatarsal protection tested to 100 joules impact
- SRC** SRC slip-resistant for both SRA and SRB
- SRA** Slip-resistant on ceramic tile floor with sodium lauryl sulphate solution
- SRB** Slip-resistant on steel floor with glycerol
- WR** Water-resistant footwear – wetted area inside footwear must not exceed 3cm<sup>2</sup>

**After being in place for over a decade, the EN ISO 20345: 2011 safety standards for footwear are changing. The changes being introduced affect a number of requirements and testing methods, so in the coming years, new safety footwear will begin carrying new safety codes to reflect EN ISO 20345:2022.**

# WHERE HEALTH, SAFETY & COMFORT COME TOGETHER

## 1 THE COMFORT-FIT SYSTEM

A combination of three integral components has been fluidly designed to ensure exceptional comfort. The last, footbed and shank are all perfectly aligned and make up the V12 tri-comfort system.

## THE LAST SHAPE

Handcrafted in Britain, our last is the basis for all IGS and STS footwear, and was made by combining the data created from scans of over 4,000 feet.

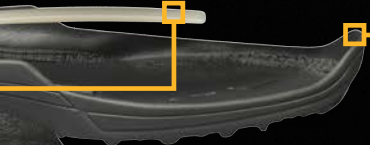
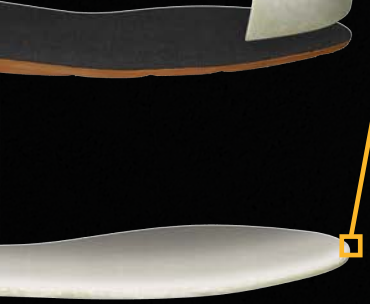
## REMOVABLE COMFORT INSOLE

Our comfort insoles cushion and cradle the foot. Removable Dynamic Arch™ insoles allow you to tailor your boot to the shape and arch of your foot, in order to provide the best possible support and comfort.

## ANTI-TWIST SHANK

Allowing the boot to flex naturally and in harmony with the foot, the anti-twist shank reduces fatigue caused by lateral twisting.





**QUALITY LEATHER OR  
TECHNICAL MATERIAL UPPER  
ENSURING SUPERIOR WEAR**

**COMPOSITE TOECAP FOR  
LIGHTWEIGHT STRENGTH**

**PROTECTIVE MIDSOLE FOR  
PENETRATION PROTECTION**

**SHOCK-ABSORBING HEEL**

**CUSHIONED MIDLAYER FOR  
SHOCK ABSORPTION**

**SLIP-RESISTANT DURABLE SOLES**

## 2

### **A SAFE DESIGN**

Expert designs and tested technologies are used in every element of a V12 boot. We build from the ground up to ensure maximum durability, comfort and safety.

### **IT STARTS WITH THE LAST**

We worked with the only remaining British lastmakers to create a last made specifically for a European foot shape, allowing our wearers the most universally comfortable experience.

The V12 last is made to accommodate all of our safety features, and we ensure it reflects our wearers' needs by reviewing industry trends and variations in foot shapes across regions and ethnicities.

# SOLES



Intelligent  
Grip System

Three years in the making, V12 have developed the Intelligent Grip System (IGS™) to provide grip when it really counts. Combining customer feedback with extensive internal research, the new sole unit features a hex pattern for water dispersal, ladder grips for working at height and an angled heel strike for slip prevention and braking.

## HEX PATTERN FOR WATER DISPERSAL

We designed our hex grip pattern to cut through water and quickly channel it away, ensuring wearers are always in contact with the ground and avoid slipping up even in the wettest conditions.

## SUPERIOR GRIP

IGS™ is the best solution for working on man-made surfaces such as:

- Tarmac
- Kennedy Grating
- Concrete



## 7° HEEL STRIKE PAD SLIP PREVENTION AND BRAKING

Slips are most likely to happen when the heel is placed down to make a new step which is why for both IGS and STS sole units we have designed the heel strike at 7°, the angle at which most slips occur. Angled splines provide increased contact with the ground, effortlessly cutting through water or dirt at every step.



LEARN MORE:

[V12footwear.com/pages/igs](http://V12footwear.com/pages/igs)

The V12 STS™ is a revolution in sole design. Inspired by tractor tyre technology and made from highly durable PU, the STS provides high stability and traction on loose surfaces and has ladder grips with firefighter standards of safety. A re-designed heel strike pad and non-clogging channels deliver exceptional water dispersal.



### LADDER GRIPS GRIP WHEN WORKING AT HEIGHT

Falls from height account for more than a quarter of all fatal injuries in the workplace, which is why both the STS and IGS include deep ladder grips for optimum grip and safety.



#### LEARN MORE:

[V12footwear.com/pages/sts](http://V12footwear.com/pages/sts)



### SOLE PATTERN TO PREVENT CLOGGING

Inspired by tractor tyre technology, the large lugs are designed to provide both backwards and forwards traction on loose surfaces, as well as being SRC compliant. The sole is self-cleaning with large angled channels to prevent clogging.

### SUPERIOR GRIP

STS™ is the best solution for working on natural and uneven surfaces such as:

- Sand
- Earth
- Ballast

# LYNX

High performance boots for people  
in high performance roles

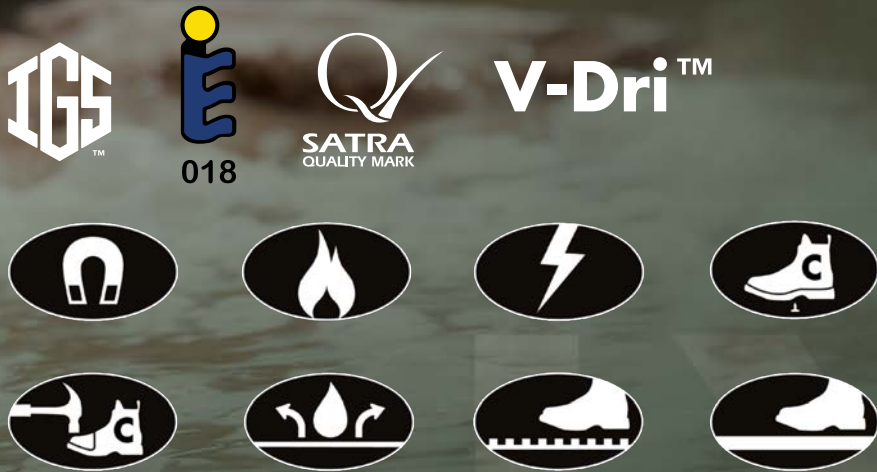




# PACKED WITH PROTECTION

Lynx is a fully waterproof ultra-comfortable safety boot range available in 3 colours. The Lynx range boasts our unique waterproofing system - the V-Dri™, our highest performing waterproof membrane to date, which keeps water out of the boot, but ensures feet stay cool in hot conditions. The result? Superior breathability and unrivalled comfort.

The Lynx boot features our IGS™ sole unit for superb grip and traction, while innovative open cell technology means its insoles maintain their shape for longer. Meanwhile a durable composite toecap and flexible composite anti-penetration midsole guarantees long-lasting foot comfort and protection.



Size 6 – 13 (39 – 48)  
EN ISO 20345:2011 S3 HRO WR SRC

- Waterproof and breathable V-Dri™ lining
- Composite safety toecap and anti-penetration midsole
- This product is carbon neutral



We achieved the milestone of carbon neutrality for Lynx due to significantly reducing our shipping carbon footprint, investing in global community projects and Lynx's durable construction. From factory to feet, it's a boot that leaves no footprint.



Scan the QR code to learn more about the Carbon Neutral Lynx range.

[blog.V12footwear.com/lynx-a-boot-that-leaves-no-footprint](http://blog.V12footwear.com/lynx-a-boot-that-leaves-no-footprint)



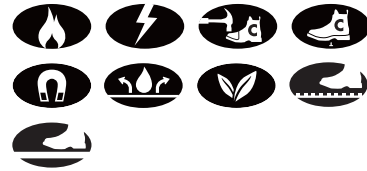
**V2120 LYNX IGS    V2130 LYNX IGS    V2140 LYNX IGS**

# BOOTS



## V1501.01 CAIMAN IGS

Size 3 – 16 (36 – 51)  
EN ISO 20345:2011 S3 HRO WR SRC



- Waterproof and breathable
- Composite safety toecap and anti-penetration midsole
- Suitable for vegans



## VR600.01 BISON IGS

Size 3 – 13 (36 – 48)  
EN ISO 20345:2011 S3 HRO SRC



- Lightweight composite safety toecap
- Flexible anti-penetration composite midsole
- Metal-free



## VR601.01 BISON IGS

Size 3 – 13 (36 – 48)  
EN ISO 20345:2011 S3 HRO SRC



- Lightweight composite safety toecap
- Flexible anti-penetration composite midsole
- Metal-free



## VR602.01 PUMA IGS

Size 3 – 13 (36 – 48)  
EN ISO 20345:2011 S3 HRO SRC



- Lightweight composite safety toecap
- Flexible anti-penetration composite midsole
- Metal-free



**V6400.01 OTTER STS**

Size 3 – 13 (36 – 48)  
EN ISO 20345:2011 S3 SRC



**STS**

- Lightweight composite safety toecap
- Flexible anti-penetration composite midsole
- Metal-free



**V6420.01 BOBCAT STS**

Size 3 – 13 (36 – 48)  
EN ISO 20345:2011 S1P SRC



**STS**

- Lightweight composite safety toecap
- Flexible anti-penetration steel midsole
- Nubuck leather



**V6863.01 RHINO STS**

Size 3 – 13 (36 – 48)  
EN ISO 20345:2011 S3 SRC



**STS**

- Lightweight composite safety toecap
- Flexible anti-penetration steel midsole
- Strong scuff cap



**V1801 IBEX STS**

Size 5 – 13 (38 – 48)  
EN ISO 20345:2011 S3 WR SRC



**STS**

- Lightweight composite safety toecap
- Flexible anti-penetration composite midsole
- Waterproof and breathable

# BOOTS



## V1235 BOULDER

Size 4 – 13 (37 – 48)  
EN ISO 20345:2011 S3 HRO SRA



- Traditional welted heat-resistant sole
- Generous-fit steel safety toecap
- Flexible anti-penetration composite midsole



## V1236 BOULDER

Size 5 – 13 (38 – 48)  
EN ISO 20345:2011 SBP E HRO SRA



- Traditional welted heat-resistant sole
- Generous-fit steel safety toecap
- Flexible anti-penetration composite midsole



## V1237 BOULDER

Size 4 – 13 (37 – 48)  
EN ISO 20345:2011 SBP E HRO SRA



- Traditional welted heat-resistant sole
- Generous-fit steel safety toecap
- Flexible anti-penetration composite midsole



## V1244 MOHAWK

Size 6 – 12 (39 – 47)  
EN ISO 20345:2011 SBP E HRO SRA



- Traditional welted heat-resistant sole
- Generous-fit steel safety toecap
- Flexible anti-penetration composite midsole



# INVINCIBLE

Next level metatarsal protection



[blog.v12footwear.com/what-is-a-met-boot](https://blog.v12footwear.com/what-is-a-met-boot)

# PIONEERING PROTECTION

The V2180 Invincible IGS is a truly revolutionary safety boot offering never-before-seen metatarsal protection. At the heart of Invincible is the patented ExoGuard™ protection system featuring a protective carbon strap 200 times stronger than steel, and a dual-density compound providing superb shock absorption and energy dispersion. This level of metatarsal protection simply isn't available anywhere else on the market.

And Invincible doesn't just excel at met protection. With Nanotechnology used to create an incredibly strong toecap, the IGS™ (Intelligent Grip System) sole unit for superior grip and advanced ankle-protecting cushioning material, this waterproof boot is armed from toe to heel.



Size 3 -14 (36 - 49)  
EN ISO 20345:2011 S3 AN HRO M WR SRC



- Patented ExoGuard™ metatarsal protection
- Waterproof and breathable
- Scuff-resistant toe and heel

# PATENTED TECHNOLOGY

ExoGuard™'s protective carbon strap features graphene mixed with resin and is the same material used in radar and stealth aircraft: that's the level of tech that Invincible is built with to deliver its metatarsal protection.



**EXO**GUARD  
**MET-PROTECTOR**



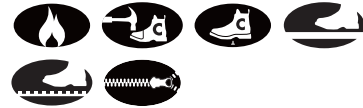
**V2180 INVINCIBLE IGS**

# HI-LEGS



## E1300.01 DEFIANT IGS

Size 3 – 13 (36 – 48)  
EN ISO 20345:2011 S3 HRO SRC



- Padded moisture-wicking lining
- Composite safety toecap and anti-penetration midsole
- Easy on/off side zip



## V1255.01 ROCKY IGS

Size 5 – 13 (38 – 48)  
EN ISO 20345:2011 S3 HRO WR SRC



- Waterproof and breathable
- Composite safety toecap and anti-penetration midsole
- Easy on/off side zip



## VR620.01 AVENGER IGS

Size 5 – 16 (38 – 51)  
EN ISO 20345:2011 S3 HRO SRC



- Lightweight composite safety toecap
- Flexible anti-penetration composite midsole
- Easy on/off side zip



## V1750 DEFENDER STS

Size 5 – 13 (38 – 48)  
EN ISO 20345:2011 S3 AN WR SRC



- Waterproof and breathable
- Composite safety toecap and anti-penetration midsole
- Poron XRD side-impact ankle protection





# RAWHIDE

An agri icon



## V1231 RAWHIDE

Size 6 – 13 (39 – 48)

EN ISO 20345:2011 SBP E HRO SRA

- Traditional welted heat-resistant sole
- Generous-fit steel safety toecap
- Flexible anti-penetration composite midsole



**V1241 STAMPEDE**

Size 6 – 12 (39 – 47)  
EN ISO 20345:2011 SBP E HRO SRA



- Traditional welted heat-resistant sole
- Flexible anti-penetration composite midsole
- Steel safety toecap



**V1261 RANCHER**

Size 5 – 13 (38 – 48)  
Non-Safety



- Traditional welted heat-resistant sole
- Leather-covered elastic side panels
- Reinforced pull-on loops



**VR609.01 COLT STS**

Size 6 – 12 (39 – 47)  
EN ISO 20345:2011 S1P SRC



**STS.**

- Lightweight composite safety toecap
- Flexible anti-penetration composite midsole
- Metal-free



**VR610.01 STALLION STS**

Size 6 – 12 (39 – 47)  
EN ISO 20345:2011 S1P SRC



**STS.**

- Lightweight composite safety toecap
- Flexible anti-penetration composite midsole
- Metal-free

# GROUNDWORKER

A weight off your feet



# UNIQUE PROTECTION

V2110 Groundworker is a safety wellington that offers wearers a unique benefit. Groundworker is tough, durable and flexible, but extremely **lightweight** compared to other safety wellingtons due to its neoprene upper material and PU construction. This eliminates heavy feet and foot fatigue, and elevates comfort to the optimum.

As well as its lightweight properties, it's packed with other safety and comfort features making it a true industry leader. Groundworker is fully waterproof with temperature regulating lining and open cell neoprene for superb breathability, while its outsole resists temperatures down to  $-17^{\circ}$ , providing outstanding thermal insulation. Finally, its anti-penetration midsole offers underfoot protection and enhanced flexibility, giving the wearer the best of both worlds of comfort and protection.



Size 3 – 13 (36 – 48)  
EN ISO 20345:2022 S5L CI FO SR

Weighing in at just 1,100 grams, if you walk in them for 10,000 steps, you'll have carried around one less hippo compared to a standard wellington - a saving of 3 tonnes a day.

  
**3 TONNES  
LIGHTER**

- Waterproof ultra-lightweight wellington boot
- Flexible anti-penetration composite midsole
- Generous-fit steel safety toecap



V2110 GROUNDWORKER

# RIGGERS



## V1250 TOMAHAWK

Size 6 – 13 (39 – 48)  
EN ISO 20345:2011 S3 HRO WR SRA



- Flexible anti-penetration composite midsole
- Waterproof and a Thinsulate temperature-regulating lining
- Generous-fit steel safety toe cap



## VR690.01 GRIZZLY IGS

Size 5 – 13 (38 – 48)  
EN ISO 20345:2011 S3 HRO CI SRC



- Lightweight composite safety toe cap
- Flexible anti-penetration steel midsole
- Fleece lining



## V6816.01 POLAR STS

Size 6 – 12 (39 – 47)  
EN ISO 20345:2011 S1P CI SRC



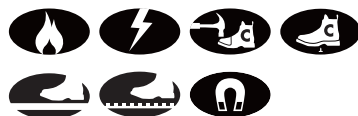
- Fleece cold-insulating lining
- Composite safety toe cap and anti-penetration midsole
- Strong pull-on loops





**VR608.01 TIGER IGS**

Size 3 – 13 (36 – 48)  
EN ISO 20345:2011 S3 HRO SRC



- Lightweight composite safety toecap
- Flexible anti-penetration composite midsole
- Metal-free



**V6411.01 OXEN STS**

Size 3 – 13 (36 – 48)  
EN ISO 20345:2011 S3 SRC



**STS**

- Lightweight composite safety toecap
- Flexible anti-penetration composite midsole
- Metal-free



**VC100 DIPLOMAT**

Size 6 – 12 (39 – 47)  
EN ISO 20345:2011 S1 HRO SRA



- Classic leather brogue style
- Rubber heat-resistant sole
- Generous-fit steel safety toecap



**VC101 ENVOY**

Size 6 – 12 (39 – 47)  
EN ISO 20345:2011 S1 HRO SRA



- Classic leather oxford style
- Rubber heat-resistant sole
- Generous-fit steel safety toecap

# VELOCITY

Lightweight but strong



## V1950 VELOCITY IGS

Size 6 – 13 (39 – 48)

EN ISO 20345:2011 S1P HI HRO ESD SRC

- Electrostatic Dissipative (ESD)
- Composite safety toecap and anti-penetration midsole
  - Suitable for vegans





## V1910 BOOST IGS

Size 6 – 15 (39 – 50)  
EN ISO 20345:2011 S3 HI HRO ESD SRC



- Electrostatic Dissipative (ESD)
- Composite safety toecap and anti-penetration midsole
- Suitable for vegans



## V1920 OCTANE IGS

Size 6 – 15 (39 – 50)  
EN ISO 20345:2011 S3 HI HRO ESD SRC



- Electrostatic Dissipative (ESD)
- Composite safety toecap and anti-penetration midsole
- Suitable for vegans



## V1930 TURBO IGS

Size 6 – 13 (39 – 48)  
EN ISO 20345:2011 S1P HI HRO ESD SRC



- Electrostatic Dissipative (ESD)
- Composite safety toecap and anti-penetration midsole
- Suitable for vegans



## V1940 TORQUE IGS

Size 6 – 13 (39 – 48)  
EN ISO 20345:2011 S1P HI HRO ESD SRC



- Electrostatic Dissipative (ESD)
- Composite safety toecap and anti-penetration midsole
- Suitable for vegans



“ Finding PPE that fits has always been a challenge for women in engineering, whether it’s rolling up sleeves, holding up trousers or having to wear multiple pairs of socks just to keep our shoes on.

Northern Line Extension Tunnels and Shafts Project Manager ”

# DEVELOPED BY WOMEN

## THE SAME PROTECTION WITHOUT EXCEPTION

Until recently, many women working in safety-critical industries had to resort to wearing smaller sized men's footwear, as there was very little specific female safety footwear available on the market. Even today, women are still given ill-fitting male safety boots to wear while working in hazardous conditions, which affects productivity due to discomfort and distraction and can lead to long-term health issues. We're proud to increase safety and prevent poor foot health by providing women with footwear that fits.

## NO SUCH THING AS UNISEX FOOTWEAR

The foot shape of men and women is significantly different. Variations in bone structure mean that a woman wearing a smaller men's boot will not be a good fit, reducing comfort and compromising safety. This is why we worked with renowned laboratories to create a women's last to provide a specific female fit.

## WORKING ALONGSIDE INDUSTRY LEADERS

When Transport for London (TfL) launched its first range of safety clothing designed for women, it was part of its commitment to support workforce diversity. The introduction of women's PPE formed part of Transport for London's 100 Years of Women in Transport campaign, celebrating the role of women in the industry, and we were honoured to have been identified by TfL to be tasked with creating women's footwear.



Look out for the Women's Range icon, indicating styles that are designed for a female-specific foot shape.

# WOMEN'S FIT



## V1915 BOOST IGS

Size 1 – 8 (34 – 42)  
EN ISO 20345:2011 S3 HI HRO ESD SRC



- Electrostatic Dissipative (ESD)
- Composite safety toecap and anti-penetration midsole
- Suitable for vegans



## V1925 OCTANE IGS

Size 1 – 8 (34 – 42)  
EN ISO 20345:2011 S3 HI HRO ESD SRC



- Electrostatic Dissipative (ESD)
- Composite safety toecap and anti-penetration midsole
- Suitable for vegans



## V1935 TURBO IGS

Size 1 – 8 (34 – 42)  
EN ISO 20345:2011 S1P HI HRO ESD SRC



- Electrostatic Dissipative (ESD)
- Composite safety toecap and anti-penetration midsole
- Suitable for vegans



## V1945 TORQUE IGS

Size 1 – 8 (34 – 42)  
EN ISO 20345:2011 S1P HI HRO ESD SRC



- Electrostatic Dissipative (ESD)
- Composite safety toecap and anti-penetration midsole
- Suitable for vegans

## WOMEN'S FIT



### V1955 VELOCITY IGS

Size 2 – 8 (35 – 42)  
EN ISO 20345:2011 S1P HI HRO ESD SRC



- Electrostatic Dissipative (ESD)
- Composite safety toecap and anti-penetration midsole
- Suitable for vegans



### V1710 CHALLENGER IGS

Size 2 – 8 (35 – 42)  
EN ISO 20345:2011 S3 HRO SRC



- Lightweight composite safety toecap
- Flexible anti-penetration composite midsole
- Padded moisture-wicking lining



### V1720 INTREPID IGS

Size 2 – 8 (35 – 42)  
EN ISO 20345:2011 S3 AN HRO SRC



- Lightweight composite safety toecap
- Flexible anti-penetration composite midsole
- Side impact ankle protection

“ There is a huge drive to encourage more women into industries such as construction and engineering – and rightly so – therefore it is essential we provide correct fitting women’s safety footwear and don’t just ‘shrink it and pink it.’ ”

**Charlie Turner**  
Head of Sales and Marketing

# MukGuard<sup>®</sup>

The essential addition to any toolkit



## SUSTAINABLE SAFETY

MukGuard is the reusable overshoe designed for tradespeople to ensure they don't bring in mud or debris from outside when moving through a client's home. With MukGuard being washable, it eliminates the need for plastic overshoes, so it's an investment in safety **and** the planet.



## THE MOST ENVIRONMENTALLY FRIENDLY AND COST-EFFECTIVE REUSABLE OVERSHOE

**75%**

MORE GRIP THAN PLASTIC OVERSHOES PROVEN THROUGH LAB TESTING



**14 KG**

WEIGHT OF PLASTIC OVERSHOES ONE ENGINEER WILL USE IN A YEAR

**50 MILES**

DISTANCE TRAVELLED IN TEST LAB WITH ONLY MINOR ABRASION



**Rated 4.5/ 5 by over 1000 users on Amazon**

“

The fit is excellent and durability is good, I wore them between my sheeted work area and the door to outside whilst up and down with tools and materials.

**RJ**

MukGuard Wearer

”

“

These are 1000% a yes if you enter properties a lot. They are washable, reusable, gripped, and much more professional than the cheap disposable ones.

**MIKEY**

Clean Kept Yard

”

Scan the QR code and explore MukGuard - you'll soon be walking with comfort, confidence and cleanliness.



[V12footwear.com/pages/mukguard](https://V12footwear.com/pages/mukguard)

# ACCESSORIES



## VS150 ENERGYSE II INSOLE

Size 3 - 16 (36 - 51)

- Individually-sized insole
- Rebound PU foam material and heel pump for breathability
- Anti-static stitch-free for comfort



## VS100

10 pair packs  
Size 3 - 13 (36 - 48)

- Designed with anti-static
- Twin anti-shock foam pods and contoured for comfort
- Machine washable



## VLBL030

Display Box  
140cm Black Boot Lace  
30 pairs

- Pack of 30 pairs and easy lace dispenser included
- Individually wrapped



## VLBL140

Black Tough Lace  
140cm  
25 pair pack

## VLBL090

Black Tough Lace  
90cm  
25 pair pack

- Individually wrapped



## BOOT LACES

140cm Black Boot Lace  
10 pair packs

- V12LCBL** Black Laces
- V12LCBR** Brown Laces
- V12LCLB** Light Brown Laces
- V12LCYL** Yellow Laces

- Pack of 10 pairs and easy lace dispenser included
- Individually wrapped





## VSOK4

Fawn Cotton Calf-Length Sock  
10 pair packs  
Size M – XL

- Heavy-duty comfort work sock
- Reinforced heel and toe including invisible no-rub toe seam
- Soft stay-up top band



## ESOK8

Black Cotton Sock  
10 pair packs  
Size M – XL

## ESOK6

Navy Cotton Sock  
10 pair packs  
Size M – XL

- Heavy-duty comfort work sock
- Reinforced heel and toe including invisible no-rub toe seam
- Soft stay-up top band



## V0011

Leather Food Dispenser  
12 tubs

- Natural vegetable-based and made in Britain
- 210ml per tub with easy countertop dispenser included
- Nourishes and protects leather

## Sock Size Guide

M	3 – 6	(36 – 39)
L	7 – 10	(41 – 44)
XL	11 – 13	(46 – 48)

# DYNAMIC ARCH™

## Insoles

### ACTIVE CARBON

Anti-bacterial properties neutralise unpleasant odours.

### ECO-FRIENDLY RECYCLED FOAM

Keeps feet dry and well-ventilated.

### CUSHIONING SYSTEM

Reduces aches and pains.

### ANTI-STATIC

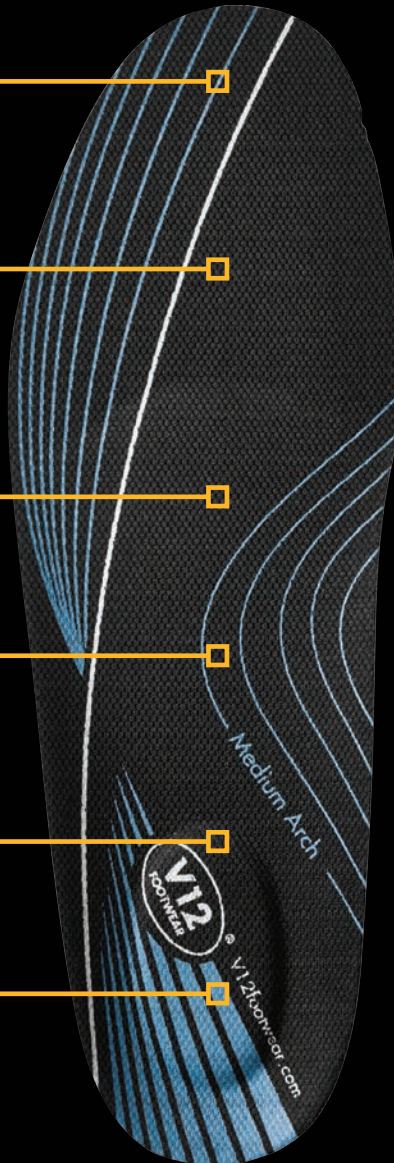
Reduces static build up. Stitch free for comfort.

### FULLY BREATHABLE

For cooler, fresher boots.

### MEMORY FOAM HEEL

Absorbs shock to help prevent knee, hip and back problems.



**VS200**  
Green Low Insole  
Size 3 - 16 (36 - 51)



**VS205**  
Blue Medium Insole  
Size 3 - 16 (36 - 51)



**VS210**  
Red High Insole  
Size 3 - 16 (36 - 51)

**VS250**  
Green Low  
Women's Fit Insole  
Size 3 - 13 (36 - 48)

**VS255**  
Blue Medium  
Women's Fit Insole  
Size 3 - 13 (36 - 48)

**VS260**  
Red High  
Women's Fit Insole  
Size 3 - 13 (36 - 48)

All Dynamic Arch™ Insoles are approved for use in V12 boots under EN20345.

“ As clinical research has progressively proven that work productivity in labour intensive environments is increased with the provision of better health care, footwear has become an increasingly important concern. A lack of correct support leads to comfort issues and pains that result in poorer performance and efficiency. Adding a fitted insole to the footwear of employees is a cost-effective tool to increasing work productivity and comfort and is something that shouldn't be ignored. ”

**PAUL O'MALLEY**

MSK podiatrist and clinical biomechanist

## DYNAMIC ARCH™ SALES KIT

This handy sales presenter comes with a sample of each of the Dynamic Arch™ insoles as well as presenting the problems they can solve and the benefits of Dynamic Arch™.

## DYNAMIC PRESSURE MAP FOOT SCAN

Book a free session for V12 to come to your workplace and measure everyone's feet with a Dynamic Pressure Map foot scan – and make sure everyone goes to work with a bespoke, injury-reducing boot.

## CONTACT US

For more information on our Dynamic Arch impression systems and training, please call +44 (0) 1249 651 900 or email [sales@V12footwear.com](mailto:sales@V12footwear.com)



## GET YOUR ARCH HEIGHT JUST RIGHT

Find your correct arch height with an easy test at home.

Visit [V12footwear.com/dynamicarch](http://V12footwear.com/dynamicarch) or scan the QR code shown here for guidance.



What problems could our **Dynamic Arch™** insoles help with?

**PLANTAR FASCIITIS**  
**DROPPED ARCHES**  
**CHAFED FEET**  
**DIABETES**

**PRONATION OF THE FOOT**  
**SUPINATION**  
**TIRED FEET**

# INDUSTRIES

## OIL & GAS



Designed with oil and gas experts, our boots are created to keep you comfortable and safe in the extremely challenging environments of this industry.

## AUTOMOTIVE ENGINEERING



This industry can be hazardous and hard on the feet, which is why we've designed a lightweight footwear range to protect and support you every step of the way.

## AEROSPACE & DEFENCE



Just as you do in this vital industry, we perfect each individual element of a V12 boot, to ensure they give optimum overall performance.

## UTILITIES



Footwear in this industry has to be just as multi-talented as its wearer – so our utilities boots have everything you'll need to complete the job.

## RAIL



Working on the rails can be challenging and dangerous, so our comfortable, reliable footwear means you can get the job done quickly and efficiently.

## AGRICULTURE



Working with both nature and heavy machinery is unpredictable and hazardous work, so we knew we had to make a safety range you can count on.

## CONSTRUCTION

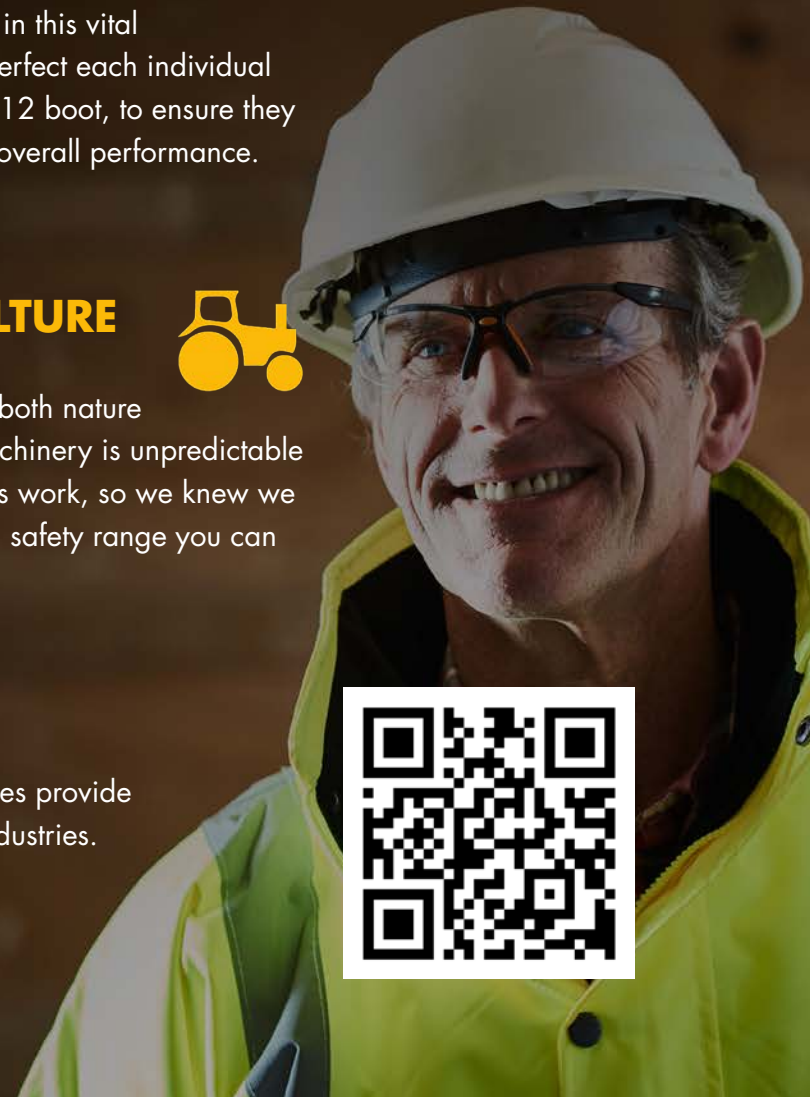


This industry poses a variety of hazards from heavy equipment to trip risks and ladder falls, so our construction boots are built to protect.

## ULTIMATE COMFORT

Our unique three part comfort-fit system & slip-resistant soles provide ultimate comfort and protection across all safety-critical industries.

**Scan the QR code to visit the industry pages on our website** [V12footwear.com](http://V12footwear.com)



# SUPPORT FOR DISTRIBUTORS

We support our distributors by sharing with them our knowledge, expertise and resources.

**We believe the best business relationships come from collaboration,** so we work with our distributors to equip them with knowledge and expertise - making them the experts for their customers. Our distributor support offer is extremely broad, featuring specialist training (see page 46), footwear auditing (page 47), footwear fitting, marketing asset sharing, point of sale provision and a **dedicated Key Account Manager for each distributor.**

We're always open to working with new partners, so if you need any support or want to explore our distributor provision more closely, email [sales@V12footwear.com](mailto:sales@V12footwear.com).



Scan the QR code to visit our asset library page for more info.

[info.V12footwear.com/asset-library](http://info.V12footwear.com/asset-library)



# TRAINING

**We design and manufacture safety footwear – it's our passion and specialism, and we want to share this with all of our partners.**

Our information-rich and comprehensive safety footwear training is digestible and retainable – and will equip your front-line sales team with the knowledge and leverage to elevate your sales.

Facilities include a large boardroom and interactive screen, while training features a free buffet lunch and certificates for all attendees.

“

Training is an essential part of our offering to enable our key distributors and partners to identify the correct footwear and find safety footwear solutions for their customers.

**Andy Turner**

CEO & Co-Founder

”



# AUDIT & TRIALING

Working together to find the best fit

## AUDIT

We're so committed to our wearers having the best footwear experience, we have our own auditing offer. We work with the customer to understand their safety needs and the demands of their work environment to find them the footwear that will best protect and serve them.

## TRIALING

Choosing the right boot for the job isn't always straightforward. We don't expect you to just choose them 'off the shelf'. With so many variables to be considered, we've introduced a free trial, so our boots can be properly tested on the job.

## CONTACT US

To find out more about a V12 trial, please get in touch with your Key Account Manager or email [sales@V12footwear.com](mailto:sales@V12footwear.com).

## THE TRIAL HAS THREE PARTS

### 1 AUDIT



We work closely with you to understand your needs and assess the demands of the work environment.

### 2 TRIAL



We recommend a selection of boots to specifically meet your needs, regularly monitoring and recording feedback throughout the trial.

### 3 REPORT



Once we've collated feedback we can recommend the footwear that's the correct fit for your business.



**V2120  
LYNX IGS**  
Pg 17



**V2130  
LYNX IGS**  
Pg 17



**V2140  
LYNX IGS**  
Pg 17



**V1501.01  
CAIMAN IGS**  
Pg 18



**VR600.01  
BISON IGS**  
Pg 18



**VR601.01  
BISON IGS**  
Pg 18



**VR602.01  
PUMA IGS**  
Pg 18



**V6400.01  
OTTER STS**  
Pg 19



**V6420.01  
BOBCAT STS**  
Pg 19



**V6863.01  
RHINO STS**  
Pg 19



**V1801  
IBEX STS**  
Pg 19



**V1235  
BOULDER**  
Pg 20



**V1236  
BOULDER**  
Pg 20



**V1237  
BOULDER**  
Pg 20



**V1244  
MOHAWK**  
Pg 20



**V2180  
INVINCIBLE IGS**  
Pg 22



**E1300.01  
DEFIANT IGS**  
Pg 24



**V1255.01  
ROCKY IGS**  
Pg 24



**VR620.01  
AVENGER IGS**  
Pg 24



**V1750  
DEFENDER STS**  
Pg 24



**V1231  
RAWHIDE**  
Pg 26



**V1241  
STAMPEDE**  
Pg 27



**V1261  
RANCHER**  
Pg 27



**VR609.01  
COLT STS**  
Pg 27



**VR610.01  
STALLION STS**  
Pg 27



**V2110  
GROUNDWORKER**  
Pg 28



**V1250  
TOMAHAWK**  
Pg 30



**VR690.01  
GRIZZLY IGS**  
Pg 30



**V6816.01  
POLAR STS**  
Pg 30



**VR608.01  
TIGER IGS**  
Pg 31



**V6411.01  
OXEN STS**  
Pg 31



**VC100  
DIPLOMAT**  
Pg 31



**VC101  
ENVOY**  
Pg 31



**V1950  
VELOCITY IGS**  
Pg 32



**V1910  
BOOST IGS**  
Pg 33



**V1920  
OCTANE IGS**  
Pg 33



**V1930  
TURBO IGS**  
Pg 33



**V1940  
TORQUE IGS**  
Pg 33



**V1915  
BOOST IGS**  
Pg 36



**V1925  
OCTANE IGS**  
Pg 36



**V1935  
TURBO IGS**  
Pg 36



**V1945  
TORQUE IGS**  
Pg 36



**V1955  
VELOCITY IGS**  
Pg 37



**V1710  
CHALLENGER IGS**  
Pg 37



**V1720  
INTREPID IGS**  
Pg 37

W

W

W

W

W

W

W





**V1503 MUKGUARD**  
Pg 38



**VS150 ENERGYSE II INSOLE**  
Pg 40



**VS100 DUAL SHOCK FOOTBED**  
Pg 40



**VLBL030 BOOTLACE DISPLAY BOX**  
Pg 40



**VLBL140 BLACK TOUGH LACE 140CM**  
Pg 40

**200-DAY GUARANTEE**

We're so convinced by our range of protective footwear that our product guarantee covers the entire V12 range for 200 days against manufacturing defects from date of user purchase.

(This guarantee does not cover footwear damage from abuse or if the footwear has been used for an unsuitable purpose. This does not affect your statutory rights.)



**VLBL090 BLACK TOUGH LACE 90CM**  
Pg 40



**V12CBL BLACK STRONG BOOT LACES**  
Pg 40



**V12CBL BROWN STRONG BOOT LACES**  
Pg 40



**V12LCB LIGHT BROWN STRONG BOOT LACES**  
Pg 40



**V12CYL YELLOW STRONG BOOT LACES**  
Pg 40

**STYLISH. SAFE. IT'S VITAL.**



**VSOK4 FAWN COTTON CALF LENGTH SOCK**  
Pg 41



**ESOK8 BLACK COTTON CALF LENGTH SOCK**  
Pg 41



**ESOK6 NAVY COTTON CALF LENGTH SOCK**  
Pg 41



**V0011 LEATHER FOOD DISPENSER (INC. 12 TUBS)**  
Pg 41



**VS200 DYNAMIC ARCH™ GREEN LOW INSOLE**  
Pg 42

Vital is a safety footwear range including hikers, trainers and wellingtons offering reliable protection and grip at an affordable price. This collection displays the latest thinking in sports technology and includes superb comfort and safety features.

**Contact us to find out more about our Vital Range.**



**VS205 DYNAMIC ARCH™ BLUE MEDIUM INSOLE**  
Pg 42



**VS210 DYNAMIC ARCH™ RED HIGH INSOLE**  
Pg 42



**VS250 DYNAMIC ARCH™ GREEN LOW WOMEN'S INSOLE**  
Pg 42



**VS255 DYNAMIC ARCH™ BLUE MEDIUM WOMEN'S INSOLE**  
Pg 42



**VS260 DYNAMIC ARCH™ RED HIGH WOMEN'S INSOLE**  
Pg 42



CODE	SPEC	VEGAN	CARBON NEUTRAL	WATERPROOF	METAL-FREE	ANTI-STATIC	ESD	SLIP RATING
V1950 / V1955	S1P HI HRO ESD	✓			✓	✓	✓	SRC
V1910 / V1915	S3 HI HRO ESD	✓			✓	✓	✓	SRC
V1920 / V1925	S3 HI HRO ESD	✓			✓	✓	✓	SRC
V1930 / V1935	S1P HI HRO ESD	✓			✓	✓	✓	SRC
V1940 / V1945	S1P HI HRO ESD	✓			✓	✓	✓	SRC
V1501.01	S3 HRO WR	✓		✓	✓	✓		SRC
VR600.01	S3 HRO				✓	✓		SRC
VR601.01	S3 HRO				✓	✓		SRC
VR602.01	S3 HRO				✓	✓		SRC
V6400.01	S3				✓	✓		SRC
V6420.01	S1P					✓		SRC
V6863.01	S3					✓		SRC
V1801	S3 WR			✓	✓	✓		SRC
V1235	S3 HRO					✓		SRA
V1236	SBP E HRO							SRA
V1237	SBP E HRO							SRA
V1244	SBP E HRO							SRA
VR608.01	S3 HRO				✓	✓		SRC
V6411.01	S3				✓	✓		SRC
VC100	S1 HRO					✓		SRA
VC101	S1 HRO					✓		SRA
V1231	SBP E HRO							SRA
V1241	SBP E HRO							SRA
V1261	NS							
VR609.01	S1P				✓	✓		SRC
VR610.01	S1P				✓	✓		SRC
V1250	S3 HRO WR			✓		✓		SRA
VR690.01	S3 HRO CI					✓		SRC
V6816.01	S1P CI					✓		SRC
E1300.01	S3 HRO					✓		SRC
V1255.01	S3 HRO WR			✓		✓		SRC
VR620.01	S3 HRO					✓		SRC
V1750	S3 AN WR			✓	✓	✓		SRC
V1710	S3 HRO				✓	✓		SRC
V1720	S3 AN HRO				✓	✓		SRC
V2110	S5L CI FO	✓		✓		✓		SR
V2120/ V2130/ V2140	S3 HRO WR		✓	✓	✓	✓		SRC
V2180	S3 AN HRO M WR			✓	✓	✓		SRC

MATERIAL	UPPER WATER RESISTANT	TYPE	SOLE UNIT MATERIAL	HEAT RESISTANCE	CHEMICAL RESISTANT	WOMEN'S FIT	MIDSOLE	TOECAP	WEIGHT
Textile		IGS	EVA/Rubber	300°C	High	✓	Comp	Comp	564g / 510g
Textile	✓	IGS	EVA/Rubber	300°C	High	✓	Comp	Comp	570g / 492g
Textile	✓	IGS	EVA/Rubber	300°C	High	✓	Comp	Comp	612g / 540g
Textile		IGS	EVA/Rubber	300°C	High	✓	Comp	Comp	566g / 512g
Textile		IGS	EVA/Rubber	300°C	High	✓	Comp	Comp	608g / 546g
Textile	✓	IGS	PU/Rubber	300°C	High		Comp	Comp	755g
Leather	✓	IGS	PU/Rubber	300°C	High		Comp	Comp	852g
Leather	✓	IGS	PU/Rubber	300°C	High		Comp	Comp	848g
Leather	✓	IGS	PU/Rubber	300°C	High		Comp	Comp	811g
Leather	✓	STS	PU/PU	150°C	Medium		Comp	Comp	792g
Leather		STS	PU/PU	150°C	Medium		Steel	Comp	710g
Leather	✓	STS	PU/PU	150°C	Medium		Steel	Comp	728g
Leather	✓	STS	PU/PU	150°C	Medium		Comp	Comp	720g
Leather	✓	GYW	Rubber	300°C	High		Comp	Steel	1006g
Leather		GYW	Rubber	300°C	High		Comp	Steel	1013g
Leather		GYW	Rubber	300°C	High		Comp	Steel	998g
Leather		GYW	Rubber	300°C	High		Comp	Steel	1011g
Leather	✓	IGS	PU/Rubber	300°C	High		Comp	Comp	718g
Leather	✓	STS	PU/PU	150°C	Medium		Comp	Comp	684g
Leather		Griplite	Rubber	300°C	High		-	Steel	583g
Leather		Griplite	Rubber	300°C	High		-	Steel	583g
Leather		GYW	Rubber	300°C	High		Comp	Steel	934g
Leather		GYW	Rubber	300°C	High		Comp	Steel	946g
Leather		GYW	Rubber	300°C	High		-	-	806g
Leather		STS	PU/PU	150°C	Medium		Comp	Comp	724g
Leather		STS	PU/PU	150°C	Medium		Comp	Comp	751g
Leather	✓	GYW	Rubber	300°C	High		Comp	Steel	1140g
Leather	✓	IGS	PU/Rubber	300°C	High		Steel	Comp	986g
Leather		STS	PU/PU	150°C	Medium		Steel	Comp	935g
Leather	✓	IGS	PU/Rubber	300°C	High		Comp	Comp	949g
Leather	✓	IGS	PU/Rubber	300°C	High		Comp	Comp	908g
Leather	✓	IGS	PU/Rubber	300°C	High		Comp	Comp	899g
Leather	✓	STS	PU/PU	150°C	Medium		Comp	Comp	892g
Leather	✓	IGS	EVA/Rubber	300°C	High		Comp	Comp	614g
Leather	✓	IGS	EVA/Rubber	300°C	High		Comp	Comp	635g
Textile/PU	✓	RANGER	PU/PU	150°C	High		Comp	Comp	1100g
Leather	✓	IGS	PU/Rubber	300°C	High		Comp	Comp	716g
Leather	✓	IGS	PU/Rubber	300°C	High		Comp	Comp	853g



**MIX**  
 Paper from  
 responsible sources  
**FSC® C013343**

Printed by Park Lane Press on FSC® certified paper, using fully sustainable, vegetable oil-based inks, power from 100% renewable resources and waterless printing technology. Print production systems registered to ISO 14001, ISO 9001 and over 97% of waste is recycled.



**2176948**  
 Printed on Carbon Captured paper



**V12 Footwear Limited**

Greenways Business Park  
 Chippenham, Wiltshire  
 SN15 1BN

**Tel +44 (0)1249 651 900**

**V12footwear.com**



**CLIMATE NEUTRAL NOW**

**RACE TO ZERO**